

4471D3

4471D6

Harris Central Appraisal District



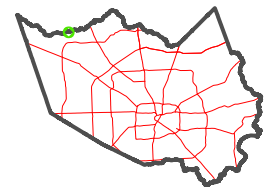
0 50 100 200 Feet

PUBLICATION DATE:
12/4/2025

Geospatial or map data maintained by the Harris Central Appraisal District is for informational purposes and may **not** have been prepared for or be suitable for legal, engineering, or surveying purposes. It does **not** represent an on-the-ground survey and only represents the approximate location of property boundaries.

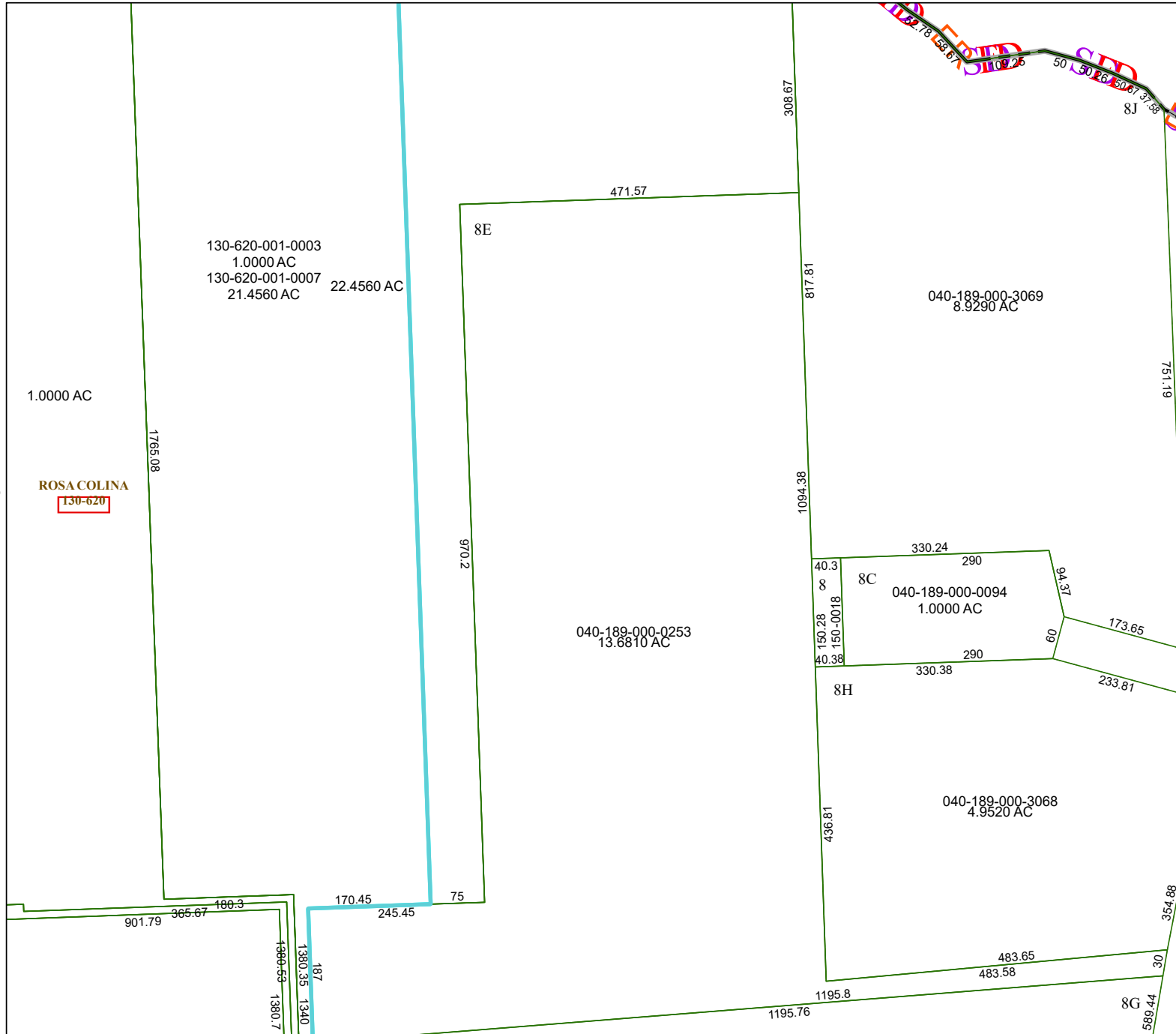


MAP LOCATION



FACET 4471D7

1	2	3	4	1
5	6	7	8	5
9	10	11	12	9



4471D11

4471D8