

Harris Central Appraisal District

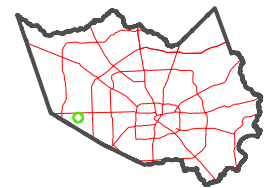


0 45 90 180 Feet

PUBLICATION DATE: 1/5/2023

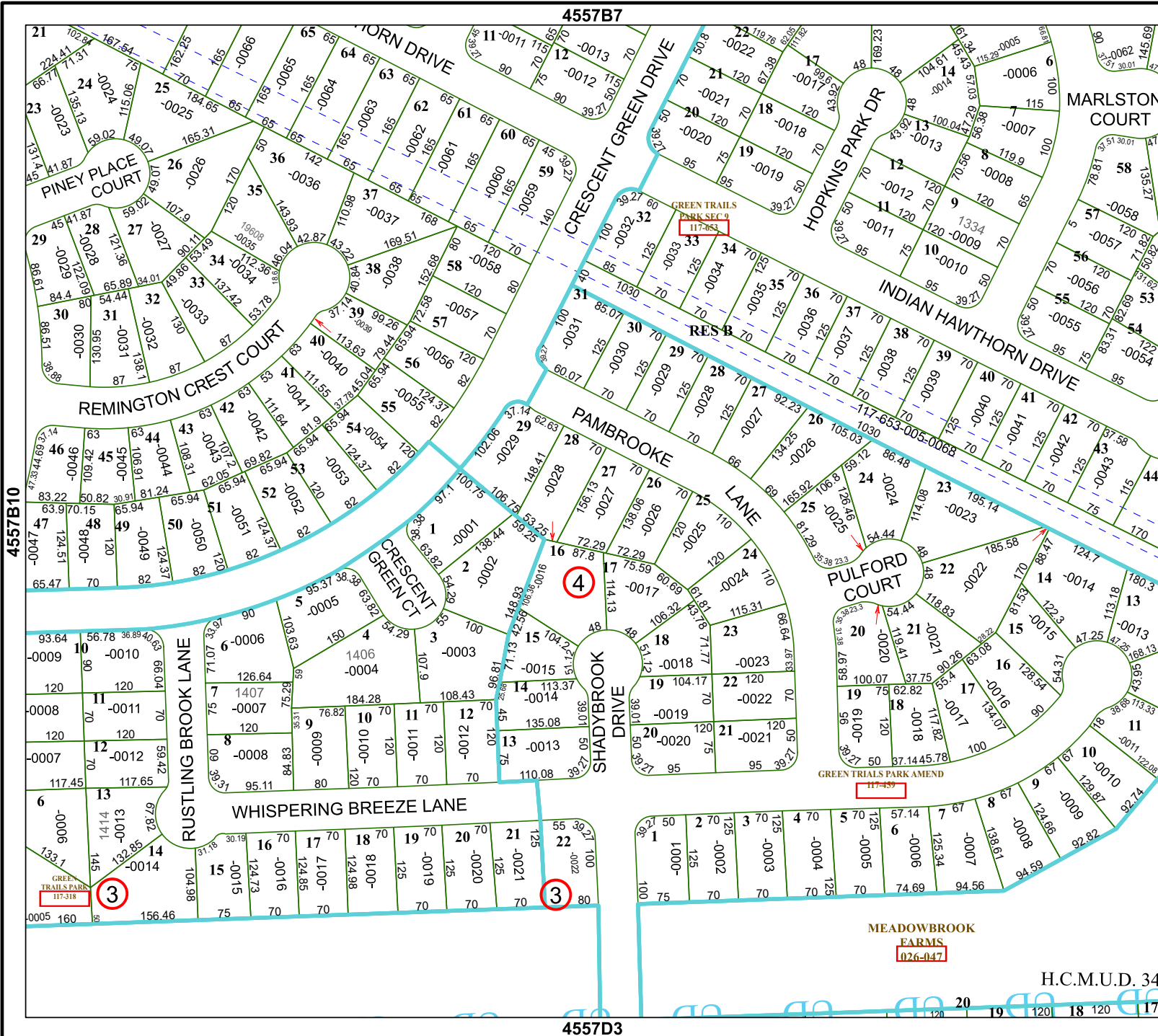
Geospatial or map data maintained by the Harris Central Appraisal District is for informational purposes and may not have been prepared for or be suitable for legal, engineering, or surveying purposes. It does not represent an on-the-ground survey and only represents the approximate location of property boundaries.

MAP LOCATION



FACET 4557B11

5	6	7	8	5
9	10	11	12	9
1	2	3	4	1



H.C.M.U.D. 34

4557D3

4557B7

4557B10

4557B12