

Harris Central Appraisal District

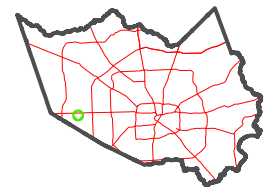


0 45 90 180 Feet

PUBLICATION DATE:
1/5/2023

Geospatial or map data maintained by the Harris Central Appraisal District is for informational purposes and may not have been prepared for or be suitable for legal, engineering, or surveying purposes. It does not represent an on-the-ground survey and only represents the approximate location of property boundaries.

MAP LOCATION

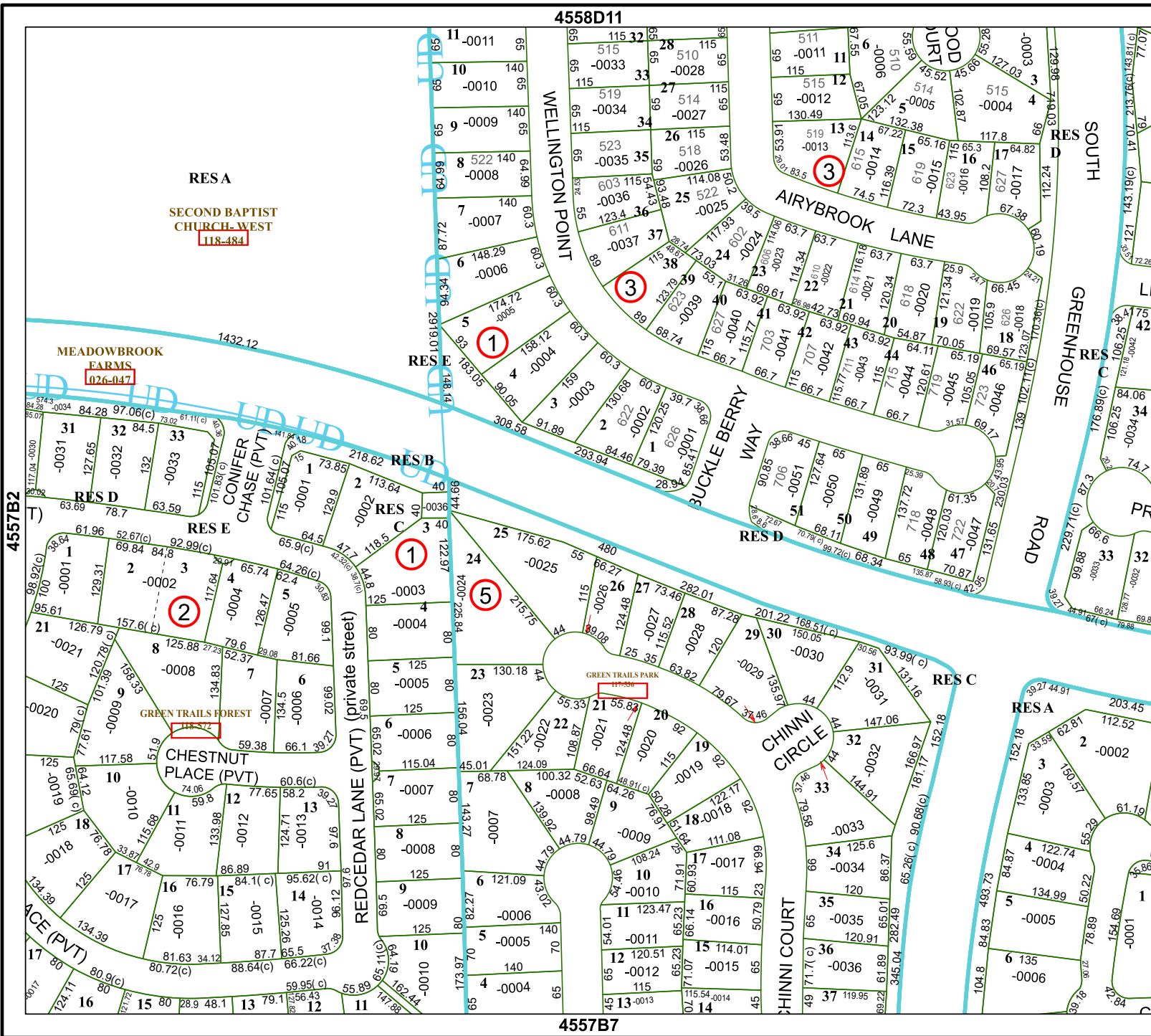


FACET 4557B3

9	10	11	12	9
1	2	3	4	1
5	6	7	8	5

4558D11

4557B7



RESA
SECOND BAPTIST
CHURCH - WEST
118-484

MEADOWBROOK
FARMS
026-047

CONIFER
CHASE (PVT)
101-834(C)

CHESTNUT
PLACE (PVT)
74.06

GREEN TRAILS PARK
177-331