

Harris Central Appraisal District

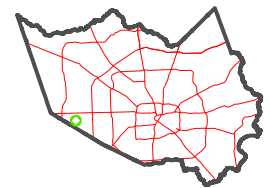


0 45 90 180 Feet

PUBLICATION DATE:
1/5/2023

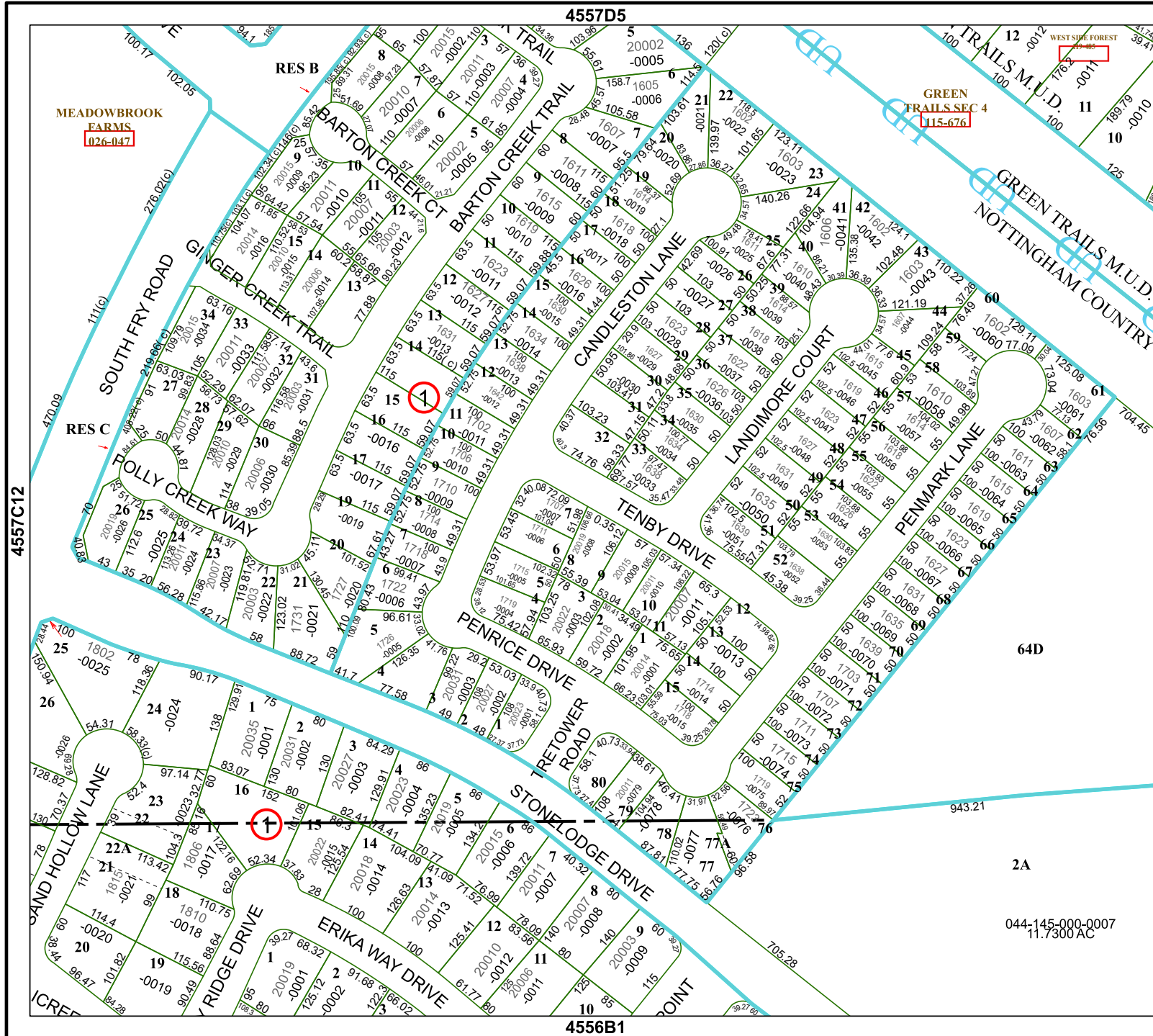
Geospatial or map data maintained by the Harris Central Appraisal District is for informational purposes and may not have been prepared for or be suitable for legal, engineering, or surveying purposes. It does not represent an on-the-ground survey and only represents the approximate location of property boundaries.

MAP LOCATION



FACET 4557D9

7	8	5	6	7
11	12	9	10	11
3	4	1	2	3



4557D5

4556B1

64D

2A

044-145-000-0007
11.7300 AC

4557C12

4557D10

