

# Harris Central Appraisal District

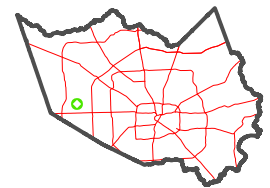


0 45 90 180 Feet

PUBLICATION DATE:  
1/5/2023

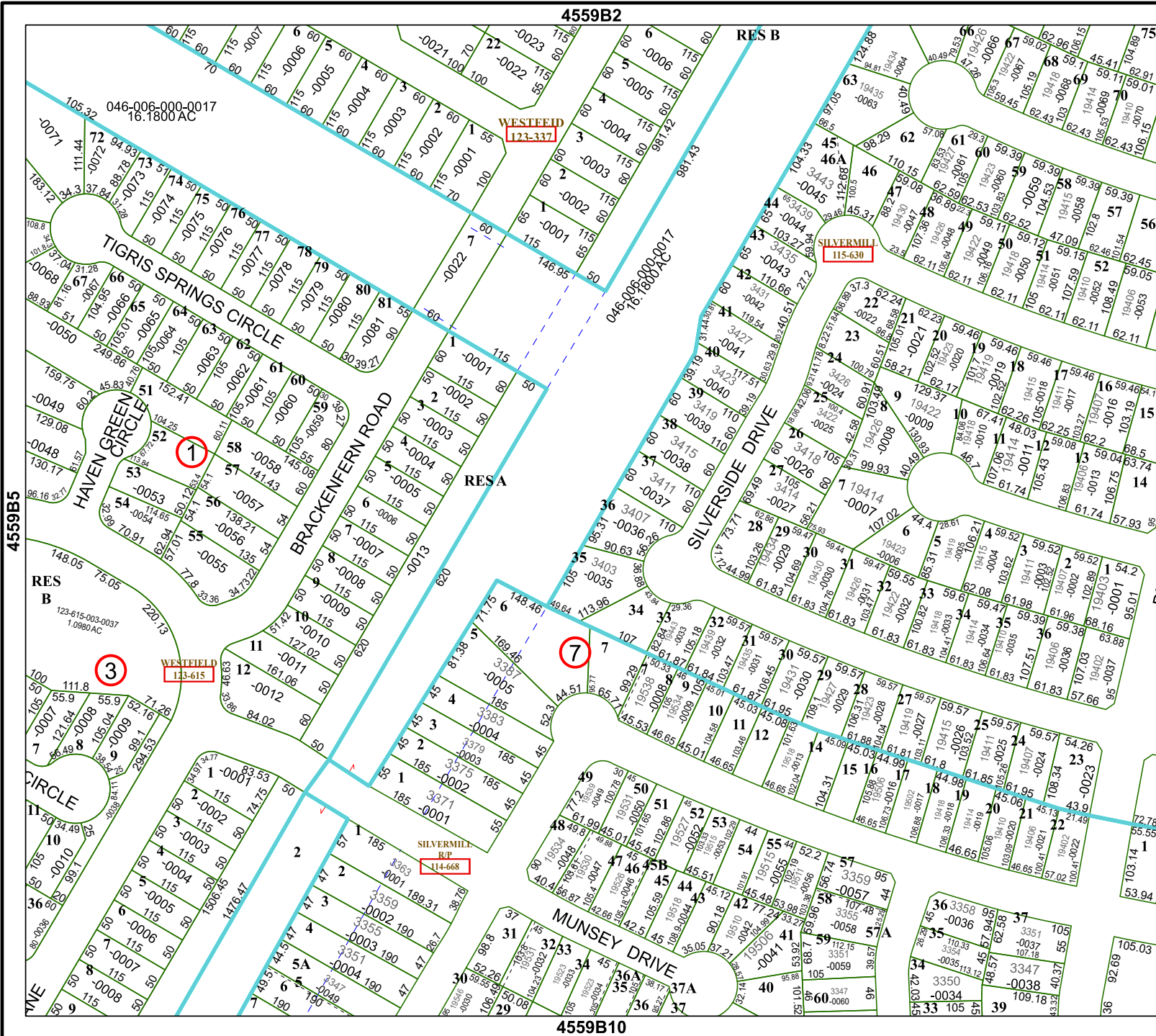
Geospatial or map data maintained by the Harris Central Appraisal District is for informational purposes and may not be suitable for legal, engineering, or surveying purposes. It does not represent an on-the-ground survey and only represents the approximate location of property boundaries.

MAP LOCATION



## FACET 4559B6

4	1	2	3	4
8	5	6	7	8
12	9	10	11	12



4559B2

RES B

WESTFIELD  
123-337

SILVERMILL  
115-630

RESA

7

SILVERMILL  
RD  
114-668

4559B10