

4561A4

4561A12

# Harris Central Appraisal District

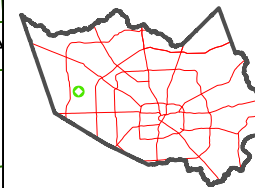


0 45 90 180 Feet

PUBLICATION DATE: 1/5/2023

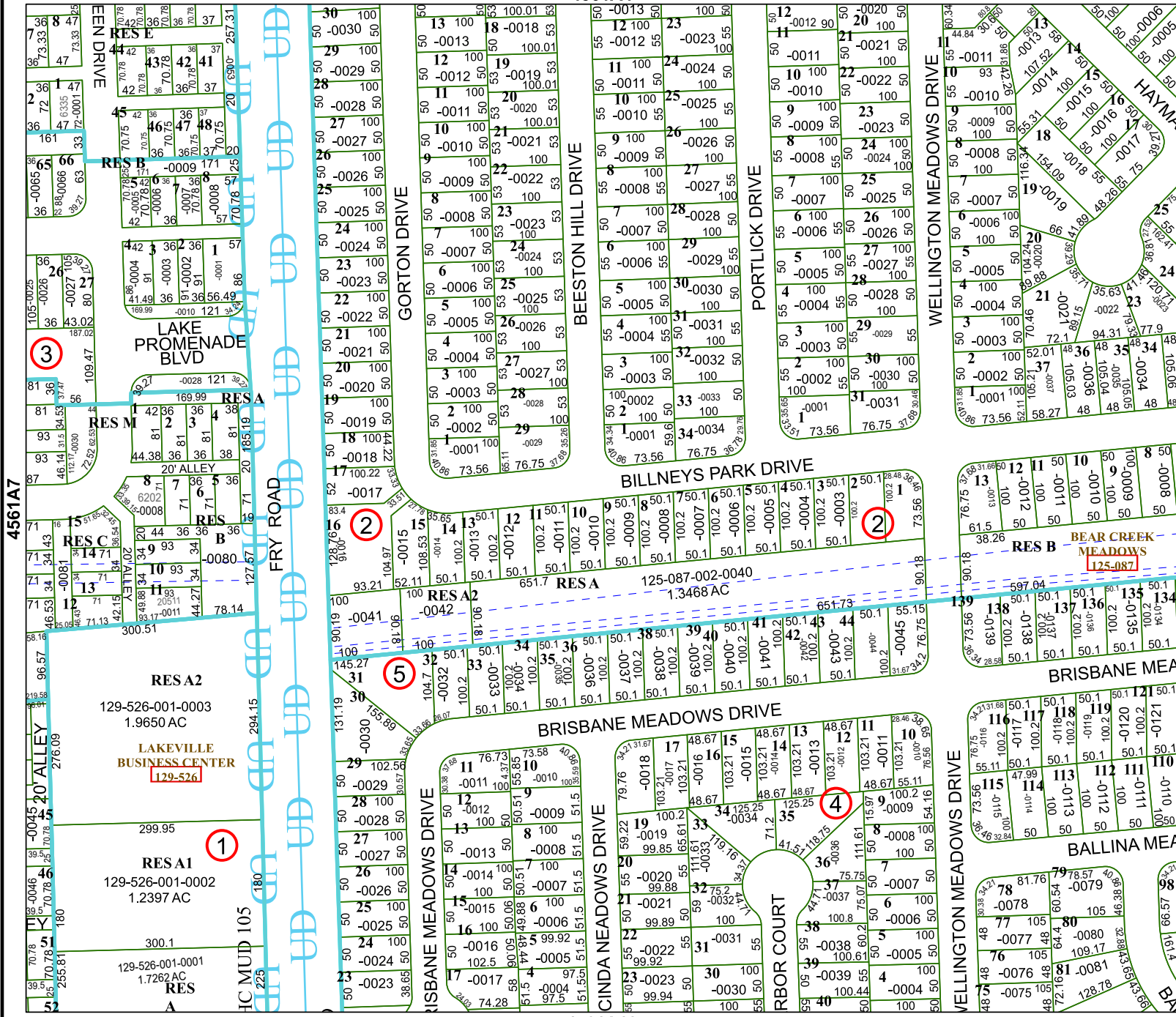
Geospatial or map data maintained by the Harris Central Appraisal District is for informational purposes and may not have been prepared for or be suitable for legal, engineering, or surveying purposes. It does not represent an on-the-ground survey and only represents the approximate location of property boundaries.

MAP LOCATION



# FACET 4561A8

2	3	4	5	6
6	7	8	9	10
10	11	12	13	14



RES A2  
129-526-001-0003  
1.9650 AC

LAKEVILLE BUSINESS CENTER  
129-526

RES A1  
129-526-001-0002  
1.2397 AC

RES  
129-526-001-0001  
1.7262 AC

1

5

2

3

4

2

4