

Harris Central Appraisal District

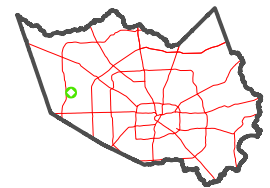


0 45 90 180 Feet

PUBLICATION DATE: 4/8/2024

Geospatial or map data maintained by the Harris Central Appraisal District is for informational purposes and may not have been prepared for or be suitable for legal, engineering, or surveying purposes. It does not represent an on-the-ground survey and only represents the approximate location of property boundaries.

MAP LOCATION



FACET 4561A9

7	8	5	6	7
11	12	9	10	11
3	4	1	2	3

4561A5

RESA

JASMINE HEIGHTS SEC 10 140-024

AZELEA FIELD STREET

YESENIA STREET

YESENIA STREET

PETUNIA PEAK STREET

4561C1

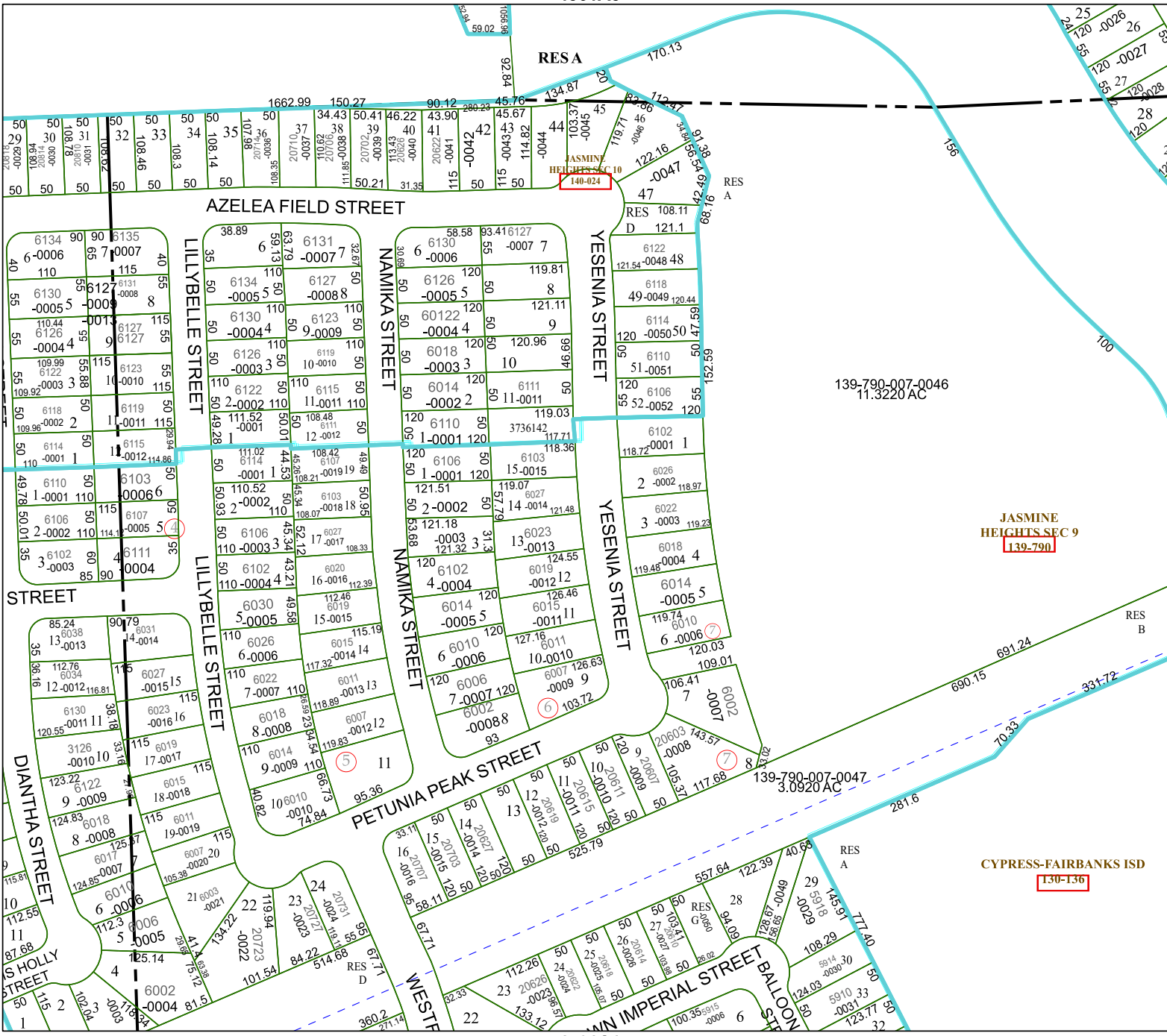
4461B12

STREET

DIANTHA STREET

S HOLLY STREET

4561C1



JASMINE HEIGHTS SEC 9 139-790

CYPRESS-FAIRBANKS ISD 130-136

4561A10

RES B

RES A

RES D