

Harris Central Appraisal District

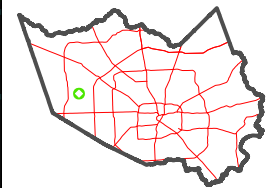


0 45 90 180 Feet

PUBLICATION DATE: 1/5/2023

Geospatial or map data maintained by the Harris Central Appraisal District is for informational purposes and may not have been prepared for or be suitable for legal, engineering, or surveying purposes. It does not represent an on-the-ground survey and only represents the approximate location of property boundaries.

MAP LOCATION

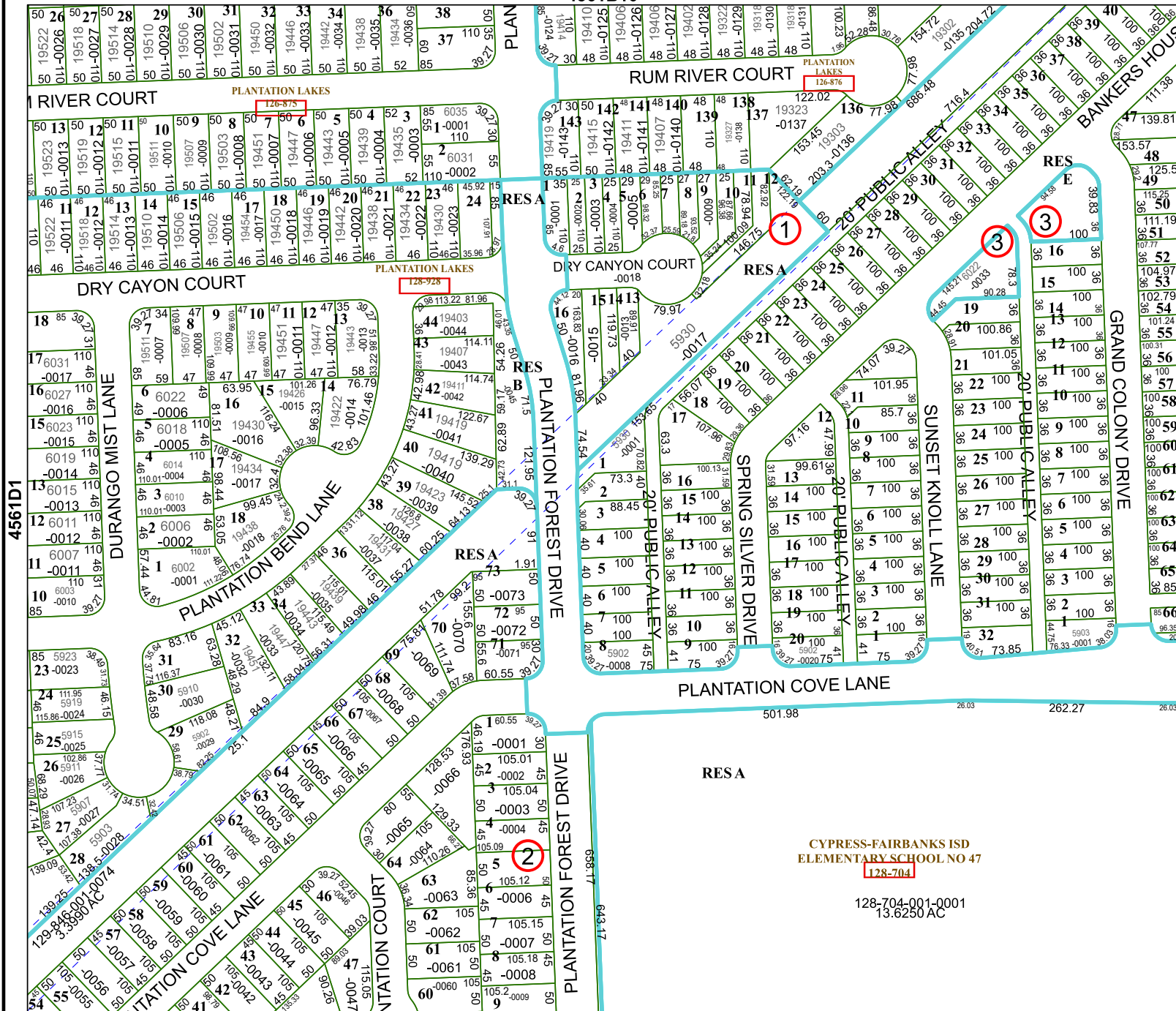


FACET 4561D2

12	9	10	11	12
4	1	2	3	4
8	5	6	7	8

4561B10

4561D6



CYPRESS-FAIRBANKS ISD
ELEMENTARY SCHOOL NO 47
128-704

128-704-001-0001
13.6250 AC

4561D1

4561D2