

# Harris Central Appraisal District

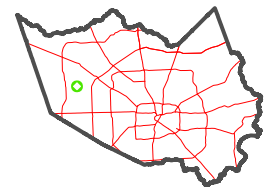


0 45 90 180 Feet

PUBLICATION DATE: 1/5/2023

Geospatial or map data maintained by the Harris Central Appraisal District is for informational purposes and may not have been prepared for or be suitable for legal, engineering, or surveying purposes. It does not represent an on-the-ground survey and only represents the approximate location of property boundaries.

MAP LOCATION

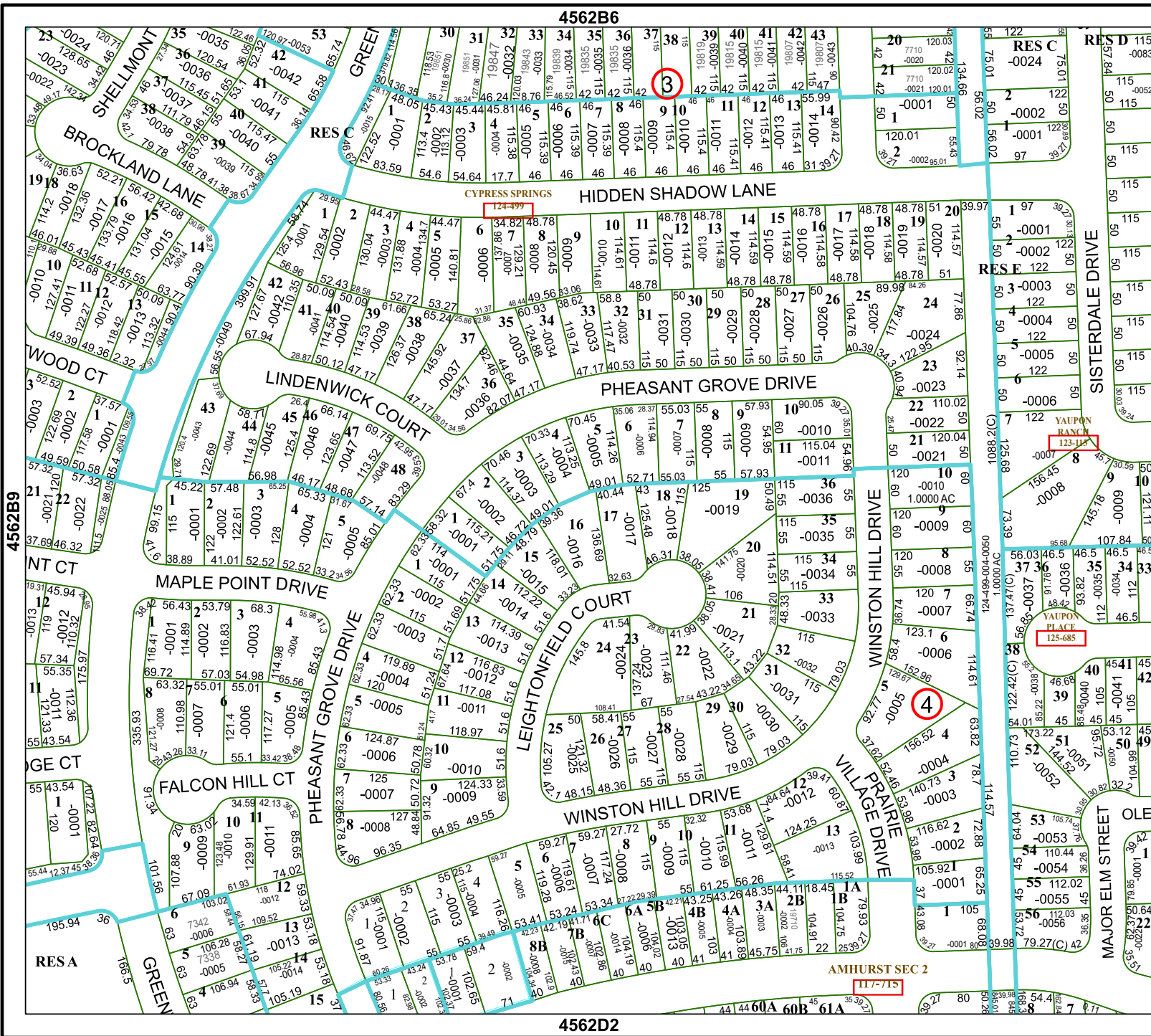


## FACET 4562B10

8	5	6	7	8
12	9	10	11	12
4	1	2	3	4

4562B6

4562D2



4562B9

4562B11

AMHURST SEC 2

117-715

3

4