

Harris Central Appraisal District

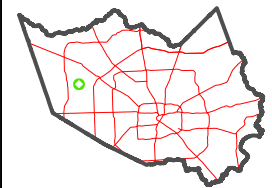


0 50 100 200 Feet

PUBLICATION DATE: 12/4/2025

Geospatial or map data maintained by the Harris Central Appraisal District is for informational purposes and may not have been prepared for or be suitable for legal, engineering, or surveying purposes. It does not represent an on-the-ground survey and only represents the approximate location of property boundaries.

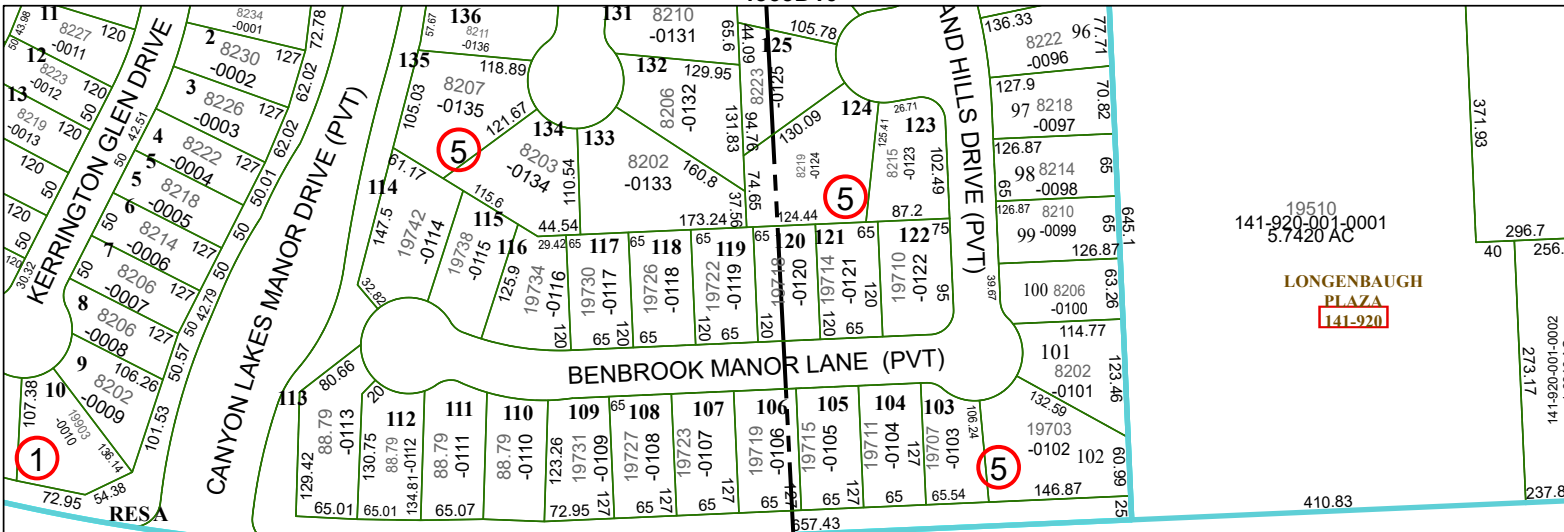
MAP LOCATION



FACET 4562B2

12	9	10	11	12
4	1	2	3	4
8	5	6	7	8

4563D10

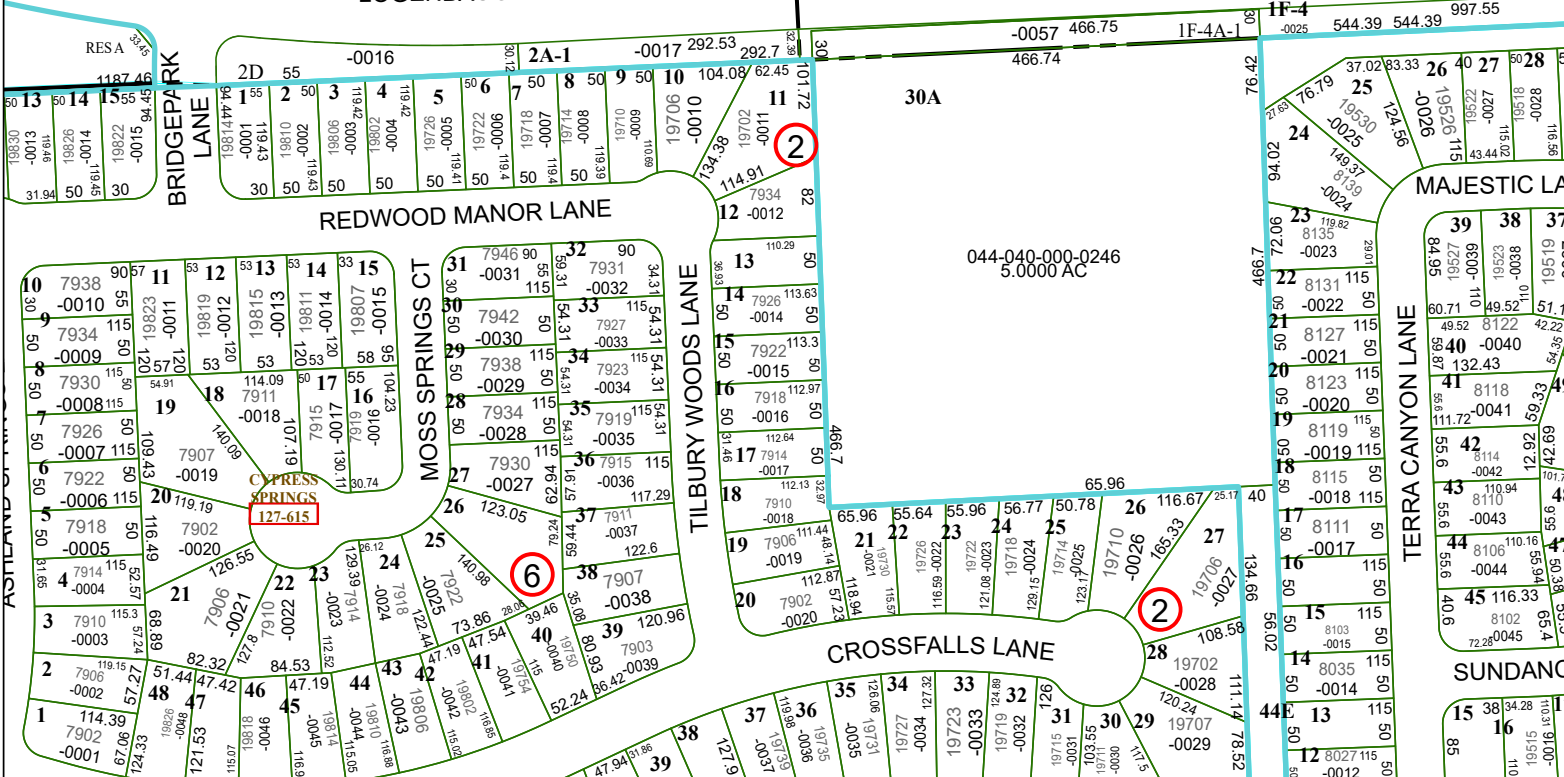


19510
141-920-001-0001
5.7420 AC

LONGENBAUGH
PLAZA
141-920

LOGENBAUGH ROAD

4562B1



CYPRESS SPRINGS
127-615

4562B6