

4563D12

VILLAS AT CANYON
LAKES WEST
129-833

RES

RES E

Harris Central Appraisal District

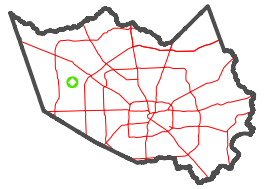


0 45 90 180 Feet

PUBLICATION DATE:
1/5/2023

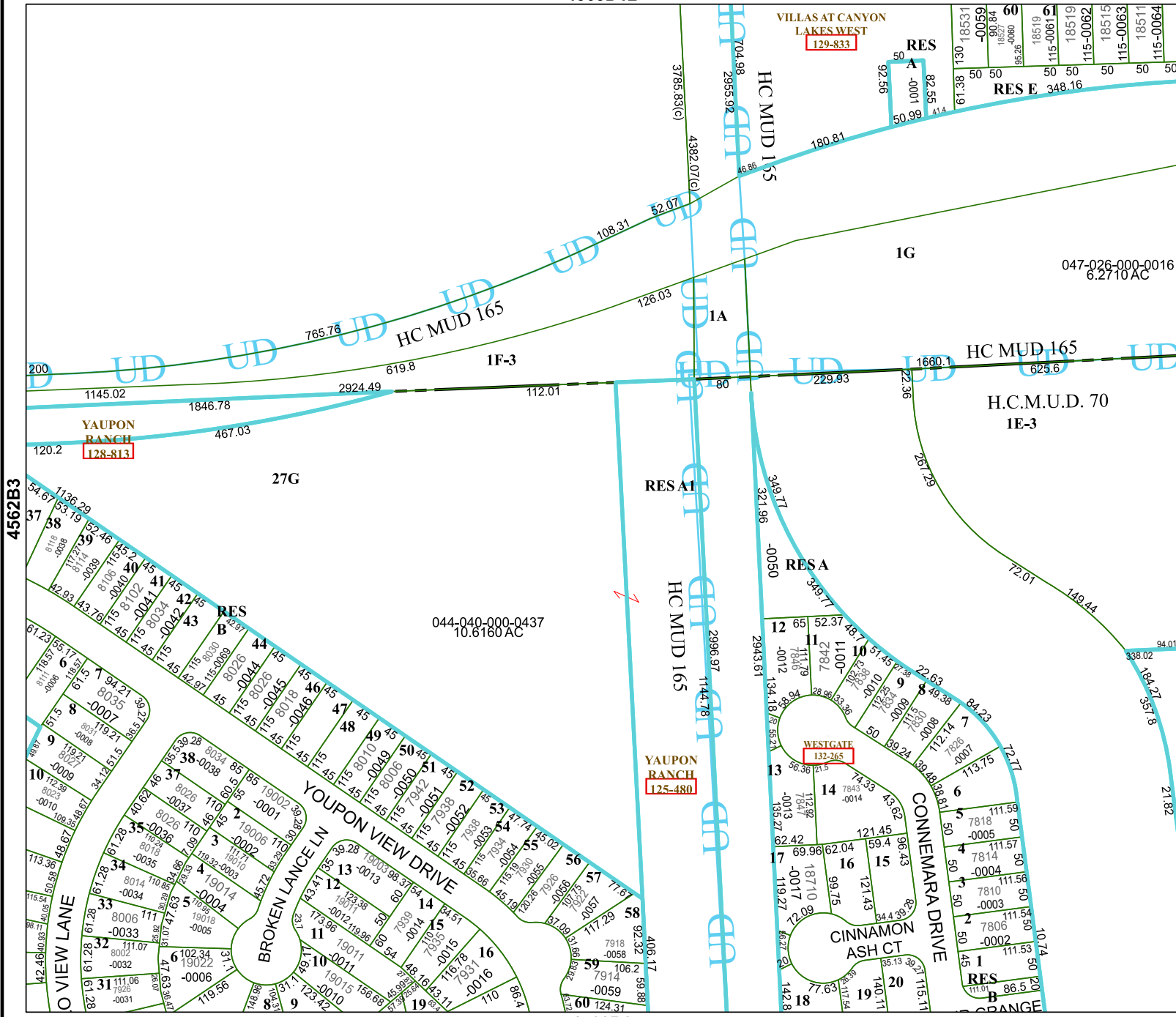
Geospatial or map data maintained by the Harris Central Appraisal District is for informational purposes and may not have been prepared for or be suitable for legal, engineering, or surveying purposes. It does not represent an on-the-ground survey and only represents the approximate location of property boundaries.

MAP LOCATION



FACET 4562B4

10	11	12	9	10
2	3	4	1	2
6	7	8	5	6



4562B3

4692A

4562B8