

# Harris Central Appraisal District

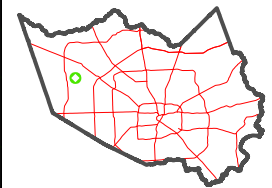


0 45 90 180 Feet

PUBLICATION DATE:  
2/28/2024

Geospatial or map data maintained by the Harris Central Appraisal District is for informational purposes and may not have been prepared for or be suitable for legal, engineering, or surveying purposes. It does not represent an on-the-ground survey and only represents the approximate location of property boundaries.

MAP LOCATION



## FACET 4563A3

9	10	11	12	9
1	2	3	4	1
5	6	7	8	5

4564C11

HARRIS COUNTY MUD  
433 WATER PLANT 2  
137-171

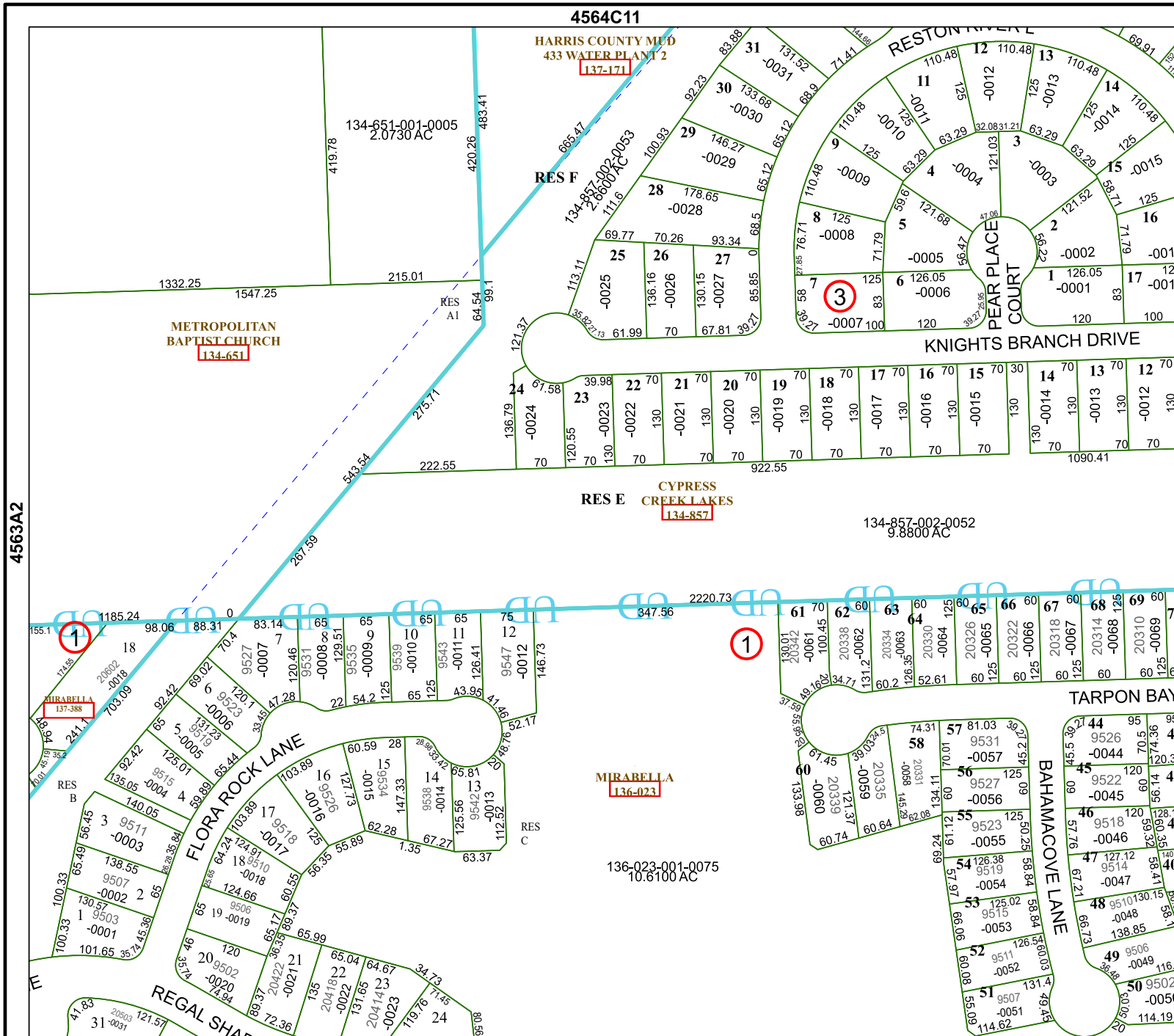
METROPOLITAN  
BAPTIST CHURCH  
134-651

RES E CYPRESS  
CREEK LAKES  
134-857

MIRABELLA  
136-023

136-023-001-0075  
10.6100 AC

4563A7



4563A2

4563A4