

4563A5

Harris Central Appraisal District



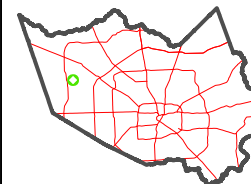
0 45 90 180 Feet

PUBLICATION DATE: 3/11/2024

Geospatial or map data maintained by the Harris Central Appraisal District is for informational purposes and may not have been prepared for or be suitable for legal, engineering, or surveying purposes. It does not represent an on-the-ground survey and only represents the approximate location of property boundaries.



MAP LOCATION



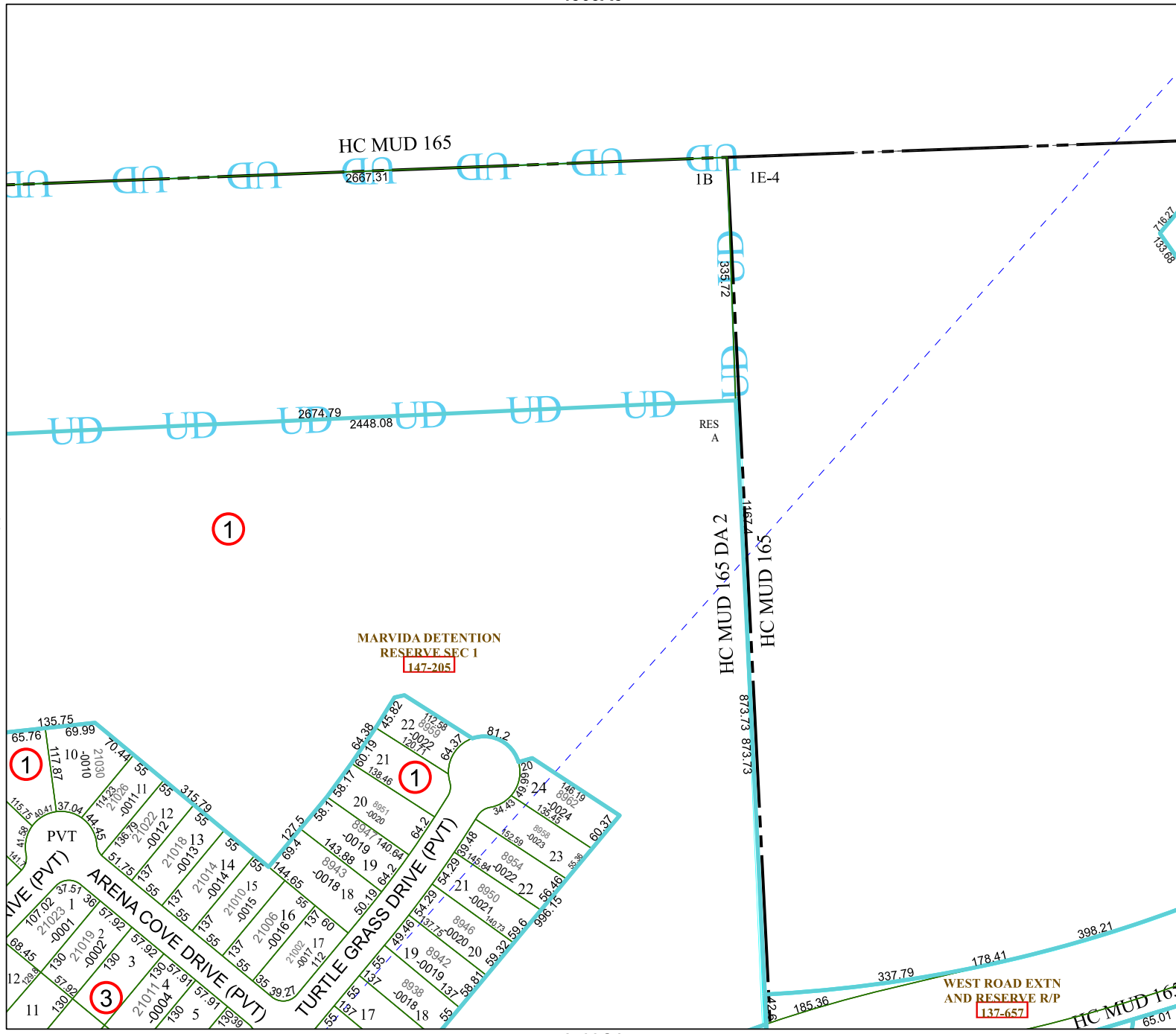
FACET 4563A9

7	8	5	6	7
11	12	9	10	11
3	4	1	2	3

4463B12

4563A10

4563C1



HC MUD 165

2667.31

1B

1E-4

2674.79

2448.08

RES A

HC MUD 165 DA 2

HC MUD 165

MARVIDA DETENTION RESERVE SEC 1

147-205

65.76

135.75

69.99

70.44

55

315.79

55

81.2

22

112.38

80.62

146

80.62

136.35

130.24

80.37

24

146

80.62

136.35

130.24

80.37

23

162.59

80.38

137.48

60.37

115.72

80.41

37.04

144.45

14.22

270.26

210.30

117.87

110

100.00

210.30

70.44

55

117.87

110

100.00

210.30

70.44

55

117.87

110

100.00

210.30

70.44

55

117.87

110

12

68.45

130

210.19

57.92

3

57.92

130

210.19

57.92

130

210.19

57.92

130

210.19

57.92

130

210.19

57.92

130

210.19

57.92

130

210.19

57.92

130

210.19

11

12

68.45

130

210.19

57.92

3

57.92

130

210.19

57.92

130

210.19

57.92

130

210.19

57.92

130

210.19

57.92

130

210.19

57.92

130

210.19

57.92

130

11

12

68.45

130

210.19

57.92

3

57.92

130

210.19

57.92

130

210.19

57.92

130

210.19

57.92

130

210.19

57.92

130

210.19

57.92

130

210.19

57.92

130

11

12

68.45

130

210.19

57.92

3

57.92

130

210.19

57.92

130

210.19

57.92

130

210.19

57.92

130

210.19

57.92

130

210.19

57.92

130

210.19

57.92

130

11

12

68.45

130

210.19

57.92

3

57.92

130

210.19

57.92

130

210.19

57.92

130

210.19

57.92

130

210.19

57.92

130

210.19

57.92

130

210.19

57.92

130

11

12

68.45

130

210.19

57.92

3

57.92

130

210.19

57.92

130

210.19

57.92

130

210.19

57.92

130

210.19

57.92

130

210.19

57.92

130

210.19

57.92

130

11

12

68.45

130

210.19

57.92

3

57.92

130

210.19

57.92

130

210.19

57.92

130

210.19

57.92

130

210.19

57.92

130

210.19

57.92

130

210.19

57.92

130

11

12

68.45

130

210.19

57.92

3

57.92

130

210.19

57.92

130

210.19

57.92

130

210.19

57.92

130

210.19

57.92

130

210.19

57.92

130

210.19

57.92

130

11

12

68.45

130

210.19

57.92

3

57.92

130

210.19

57.92

130

210.19

57.92

130

210.19