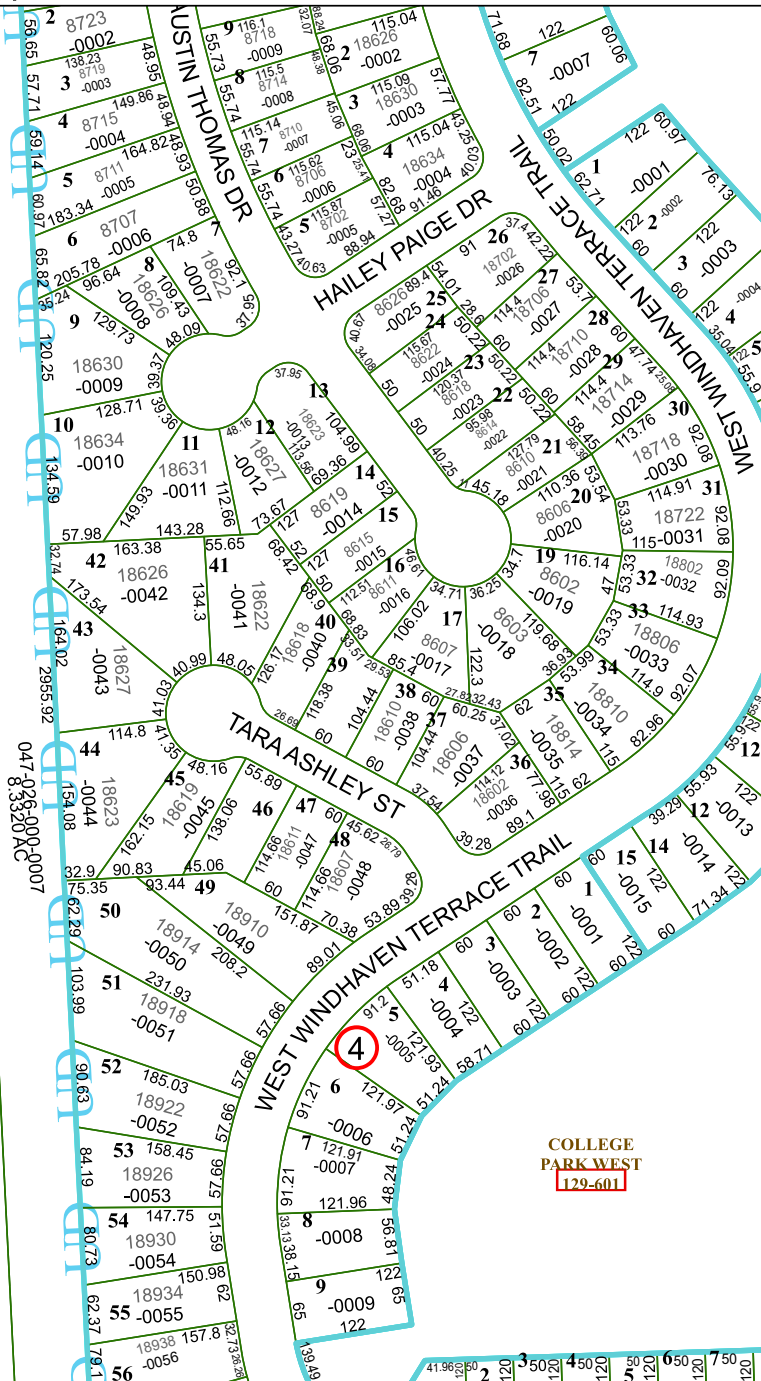


4563D4

4563D7

4563D12



Harris Central Appraisal District



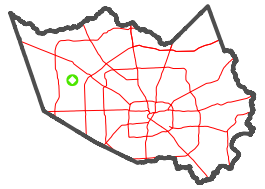
0 45 90 180 Feet

PUBLICATION DATE: 1/5/2023

Geospatial or map data maintained by the Harris Central Appraisal District is for informational purposes and may not have been prepared for or be suitable for legal, engineering, or surveying purposes. It does not represent an on-the-ground survey and only represents the approximate location of property boundaries.



MAP LOCATION



FACET 4563D8

2	3	4	1	2
6	7	8	5	6
10	11	12	9	10

COLLEGE PARK WEST
129-601