

# Harris Central Appraisal District

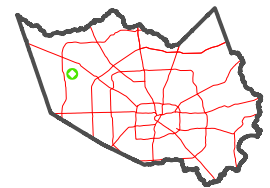


0 45 90 180 Feet

PUBLICATION DATE:  
12/30/2023

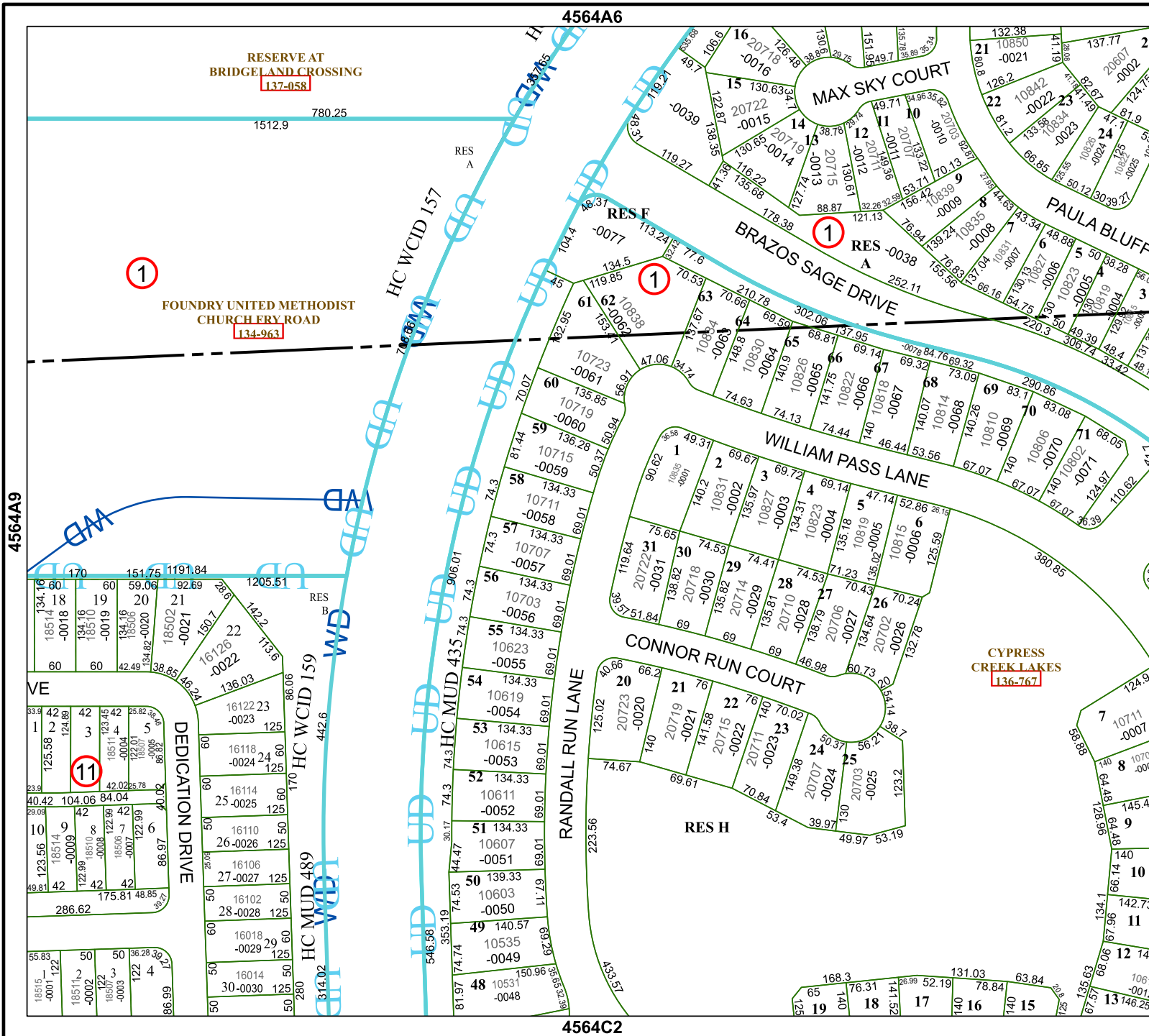
Geospatial or map data maintained by the Harris Central Appraisal District is for informational purposes and may not have been prepared for or be suitable for legal, engineering, or surveying purposes. It does not represent an on-the-ground survey and only represents the approximate location of property boundaries.

MAP LOCATION



## FACET 4564A10

8	5	6	7	8
12	9	10	11	12
4	1	2	3	4



RESERVE AT  
BRIDGLAND CROSSING  
**137-058**

FOUNDRY UNITED METHODIST  
CHURCHERY ROAD  
**134-963**

CYPRESS  
CREEK LAKES  
**136-767**

4564A6

4564C2

4564A9

4564A11

1

1

1

11