

4564A8

Harris Central Appraisal District

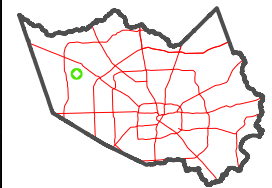


0 45 90 180 Feet

PUBLICATION DATE: 1/5/2023

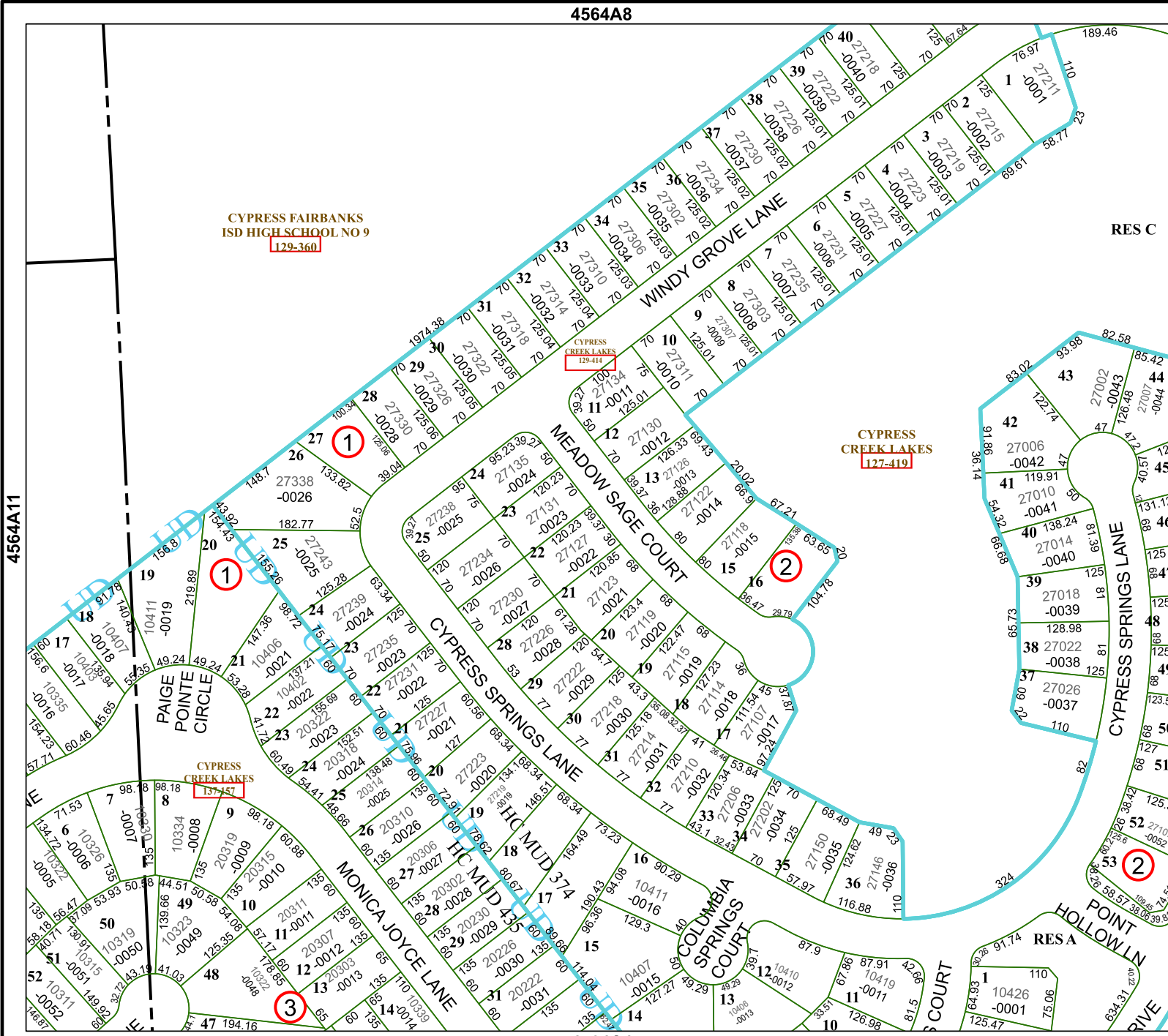
Geospatial or map data maintained by the Harris Central Appraisal District is for informational purposes and may not have been prepared for or be suitable for legal, engineering, or surveying purposes. It does not represent an on-the-ground survey and only represents the approximate location of property boundaries.

MAP LOCATION



FACET 4564A12

6	7	8	5	6
10	11	12	9	10
2	3	4	1	2



RES C

CYPRESS CREEK LAKES
127-419

CYPRESS FAIRBANKS
ISD HIGH SCHOOL NO 9
129-360

4564C4

4564A11

4564B9

RES A