

Harris Central Appraisal District

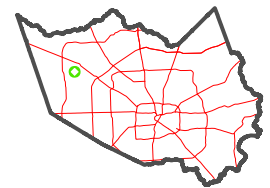


0 45 90 180 Feet

PUBLICATION DATE: 1/5/2023

Geospatial or map data maintained by the Harris Central Appraisal District is for informational purposes and may not have been prepared for or be suitable for legal, engineering, or surveying purposes. It does not represent an on-the-ground survey and only represents the approximate location of property boundaries.

MAP LOCATION

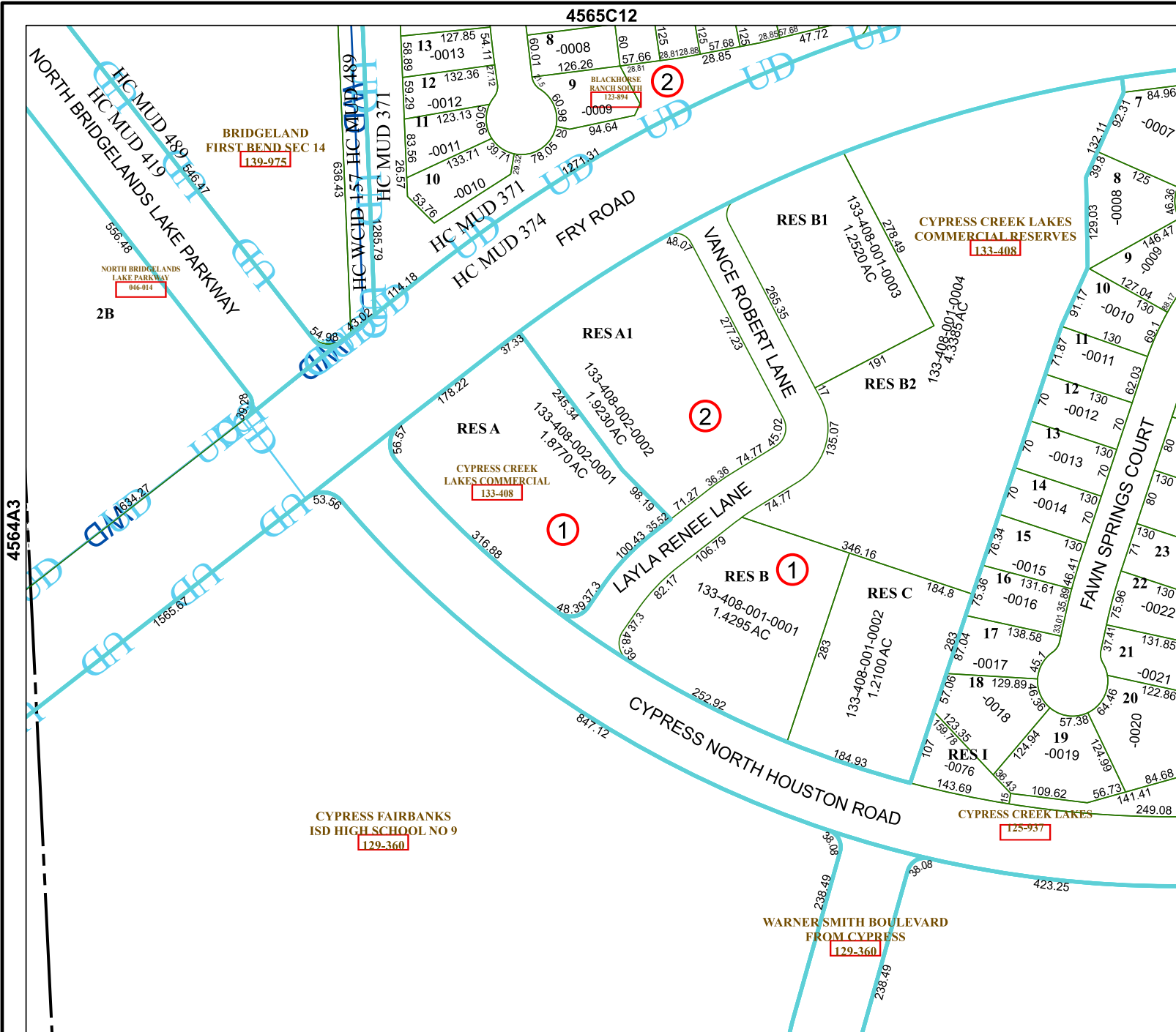


FACET 4564A4

10	11	12	9	10
2	3	4	1	2
6	7	8	5	6

4565C12

4564A8



BRIDGELAND FIRST BEND SEC 14
139-975

NORTH BRIDGELANDS LAKE PARKWAY
046-014

CYPRESS CREEK LAKES COMMERCIAL
133-408

CYPRESS FAIRBANKS ISD HIGH SCHOOL NO 9
129-360

CYPRESS CREEK LAKES COMMERCIAL RESERVES
133-408

CYPRESS CREEK LAKES
125-937

WARNER SMITH BOULEVARD FROM CYPRESS
129-360