

# Harris Central Appraisal District

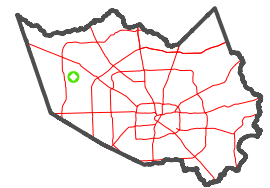


0 45 90 180 Feet

PUBLICATION DATE: 2/28/2024

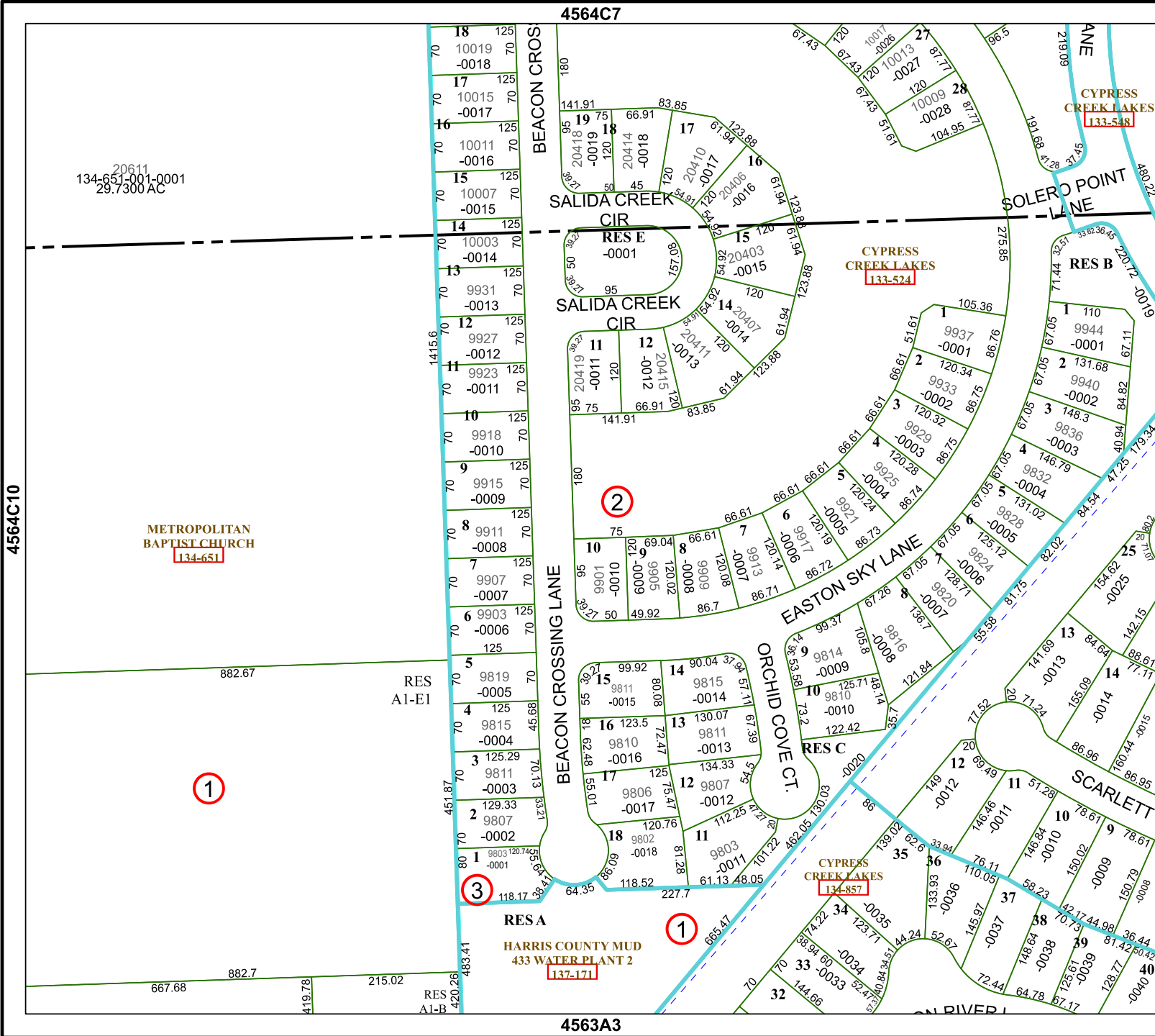
Geospatial or map data maintained by the Harris Central Appraisal District is for informational purposes and may not have been prepared for or be suitable for legal, engineering, or surveying purposes. It does not represent an on-the-ground survey and only represents the approximate location of property boundaries.

MAP LOCATION



## FACET 4564C11

5	6	7	8	5
9	10	11	12	9
1	2	3	4	1



20611  
134-651-001-0001  
29.7300 AC

METROPOLITAN BAPTIST CHURCH  
134-651

RES AI-EI

RESA  
HARRIS COUNTY MUD  
433 WATER PLANT 2  
137-171

CYPRESS CREEKLAKES  
133-524

CYPRESS CREEKLAKES  
133-548

CYPRESS CREEKLAKES  
134-857

4564C7

4563A3

4564C10

4564C12