

# Harris Central Appraisal District

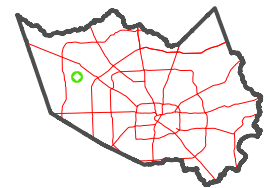


0 45 90 180 Feet

PUBLICATION DATE: 1/5/2023

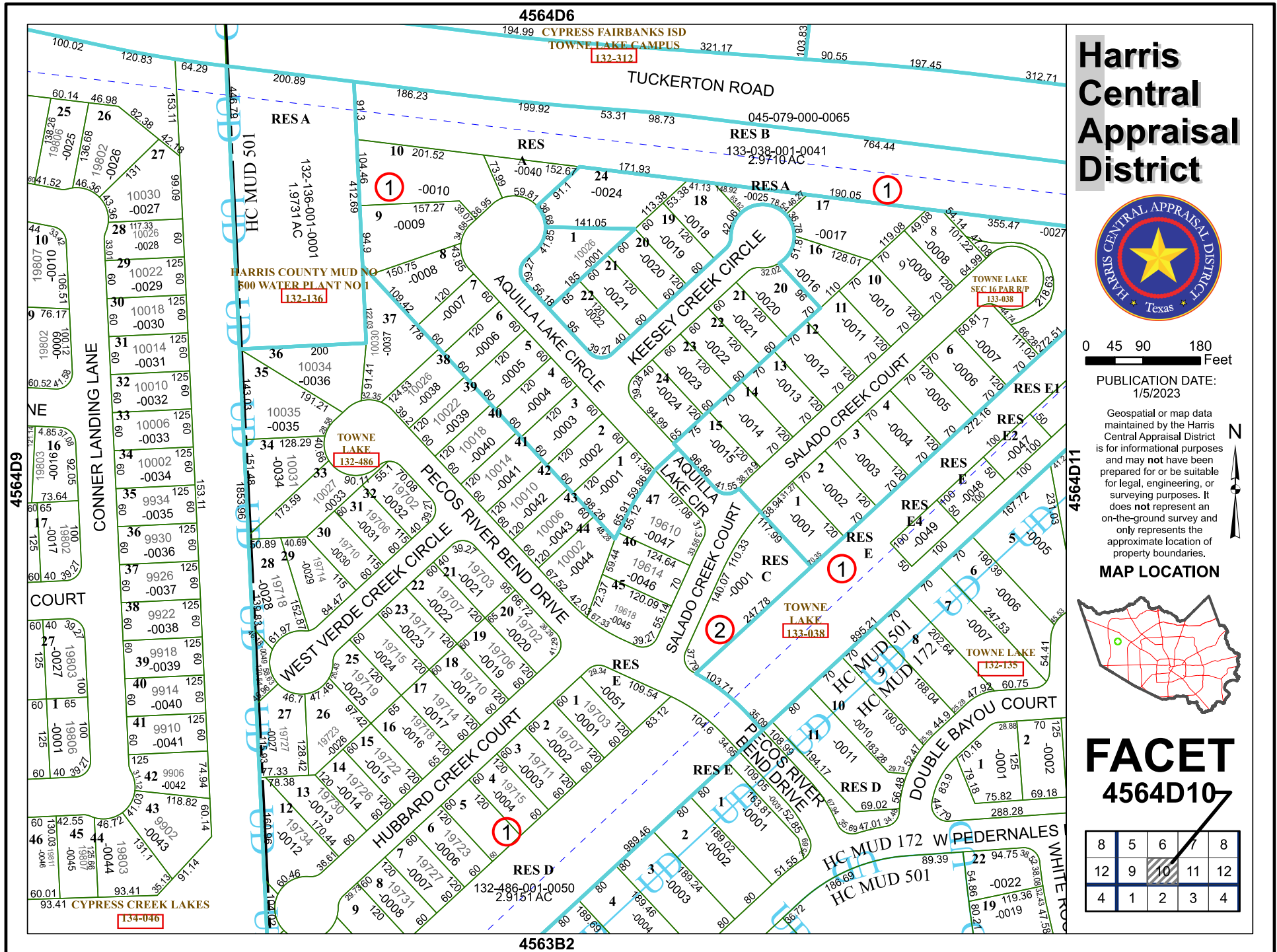
Geospatial or map data maintained by the Harris Central Appraisal District is for informational purposes and may not have been prepared for or be suitable for legal, engineering, or surveying purposes. It does not represent an on-the-ground survey and only represents the approximate location of property boundaries.

MAP LOCATION



## FACET 4564D10

8	5	6	7	8
12	9	10	11	12
4	1	2	3	4



4564D6

194.99 CYPRESS FAIRBANKS ISD TOWNE LAKE CAMPUS 321.17 103.83 90.55 197.45 312.71

132-312

TUCKERTON ROAD

RES A

RES

045-079-000-0065

RES B 133-038-001-0041 764.44 2.9719 AC

RES A

HARRIS COUNTY MUD NO 500 WATER PLANT NO 132-136

TOWNE LAKE SEC 16 PAR R/P 133-038

TOWNE LAKE 132-486

TOWNE LAKE 133-038

TOWNE LAKE 132-135

4563B2

4564D9

4564D11

CONNER LANDING LANE

COURT

PECOS RIVER BEND DRIVE

HUBBARD CREEK COURT

RES D

CYPRESS CREEK LAKES 134-046

HC MUD 501

HARRIS COUNTY MUD NO 500 WATER PLANT NO 132-136

TOWNE LAKE 132-486

TOWNE LAKE 133-038

TOWNE LAKE 132-135

RES D 132-486-001-0050 2.9151 AC

CYPRESS CREEK LAKES 134-046

4563B2

