

Harris Central Appraisal District

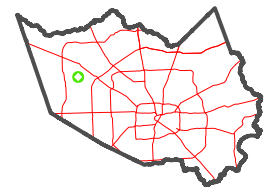


0 45 90 180 Feet

PUBLICATION DATE: 1/5/2023

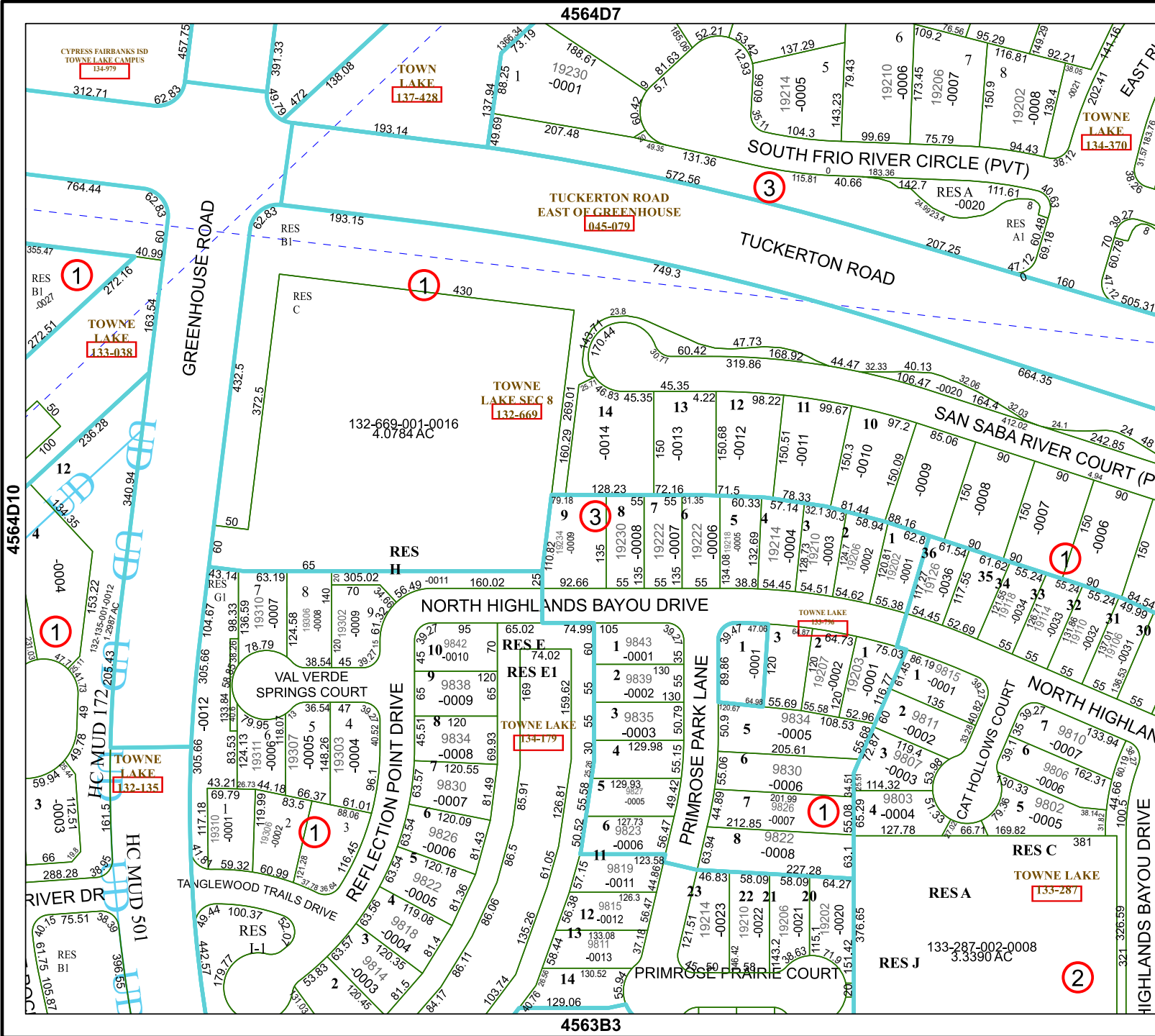
Geospatial or map data maintained by the Harris Central Appraisal District is for informational purposes and may not have been prepared for or be suitable for legal, engineering, or surveying purposes. It does not represent an on-the-ground survey and only represents the approximate location of property boundaries.

MAP LOCATION



FACET 4564D11

| | | | | |
|---|----|----|----|---|
| 5 | 6 | 7 | 8 | 5 |
| 9 | 10 | 11 | 12 | 9 |
| 1 | 2 | 3 | 4 | 1 |



4564D10

4563B3

4564D12

4564D11