

# Harris Central Appraisal District



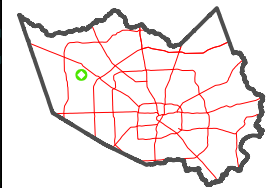
0 45 90 180 Feet

PUBLICATION DATE: 5/6/2024

Geospatial or map data maintained by the Harris Central Appraisal District is for informational purposes and may not have been prepared for or be suitable for legal, engineering, or surveying purposes. It does not represent an on-the-ground survey and only represents the approximate location of property boundaries.



## MAP LOCATION

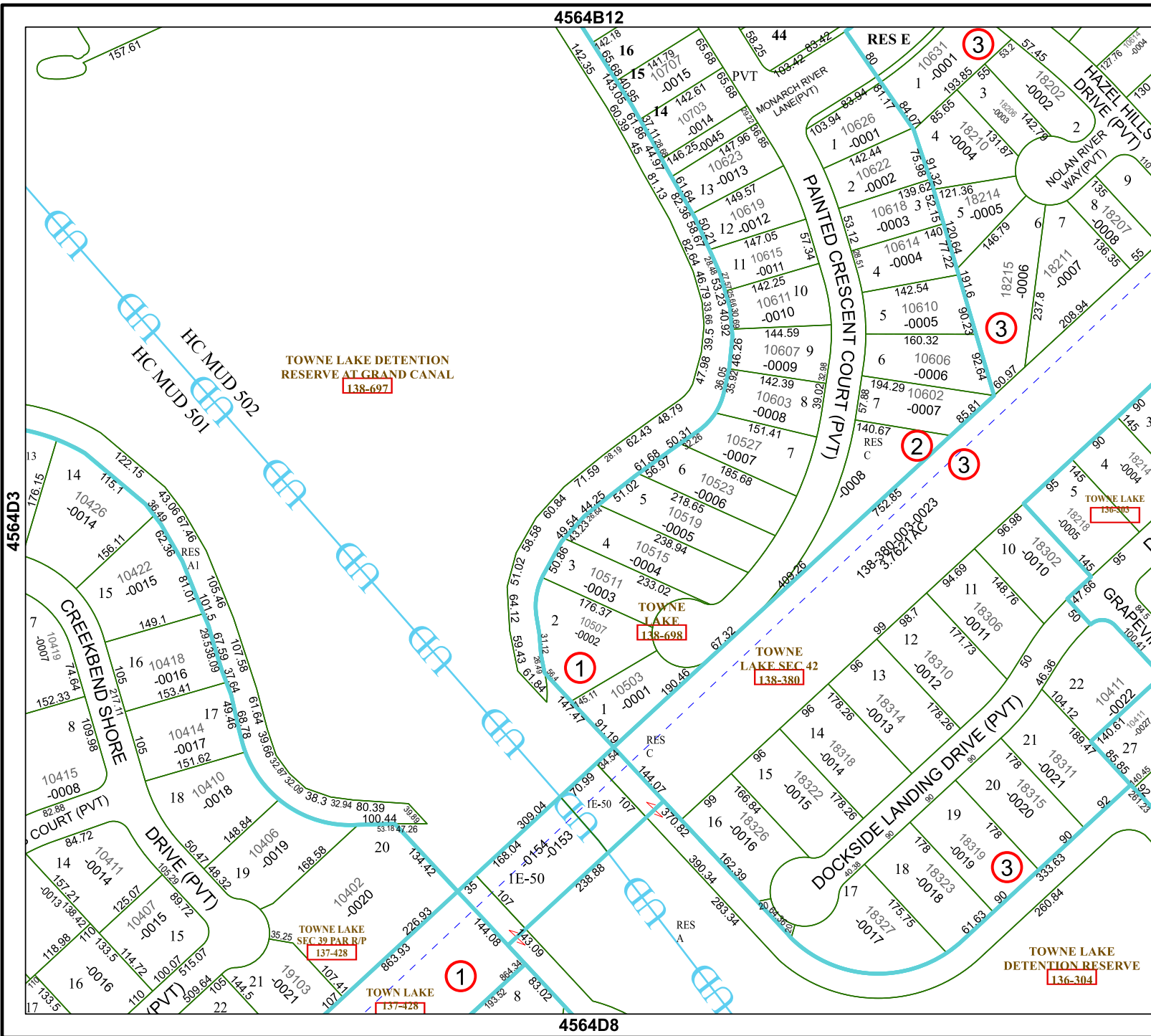


# FACET 4564D4

10	11	12	9	10
2	3	4	1	2
6	7	8	5	6

4564B12

4564D8



TOWNE LAKE DETENTION RESERVE AT GRAND CANAL  
138-697

TOWNE LAKE  
138-698

TOWNE LAKE SEC 42  
138-380

TOWNE LAKE SEC 39 PAR R/P  
137-428

TOWNE LAKE  
137-428

TOWNE LAKE DETENTION RESERVE  
136-304