

Harris Central Appraisal District

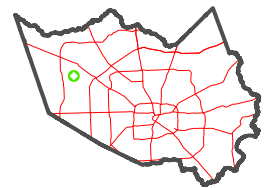


0 45 90 180 Feet

PUBLICATION DATE: 5/6/2024

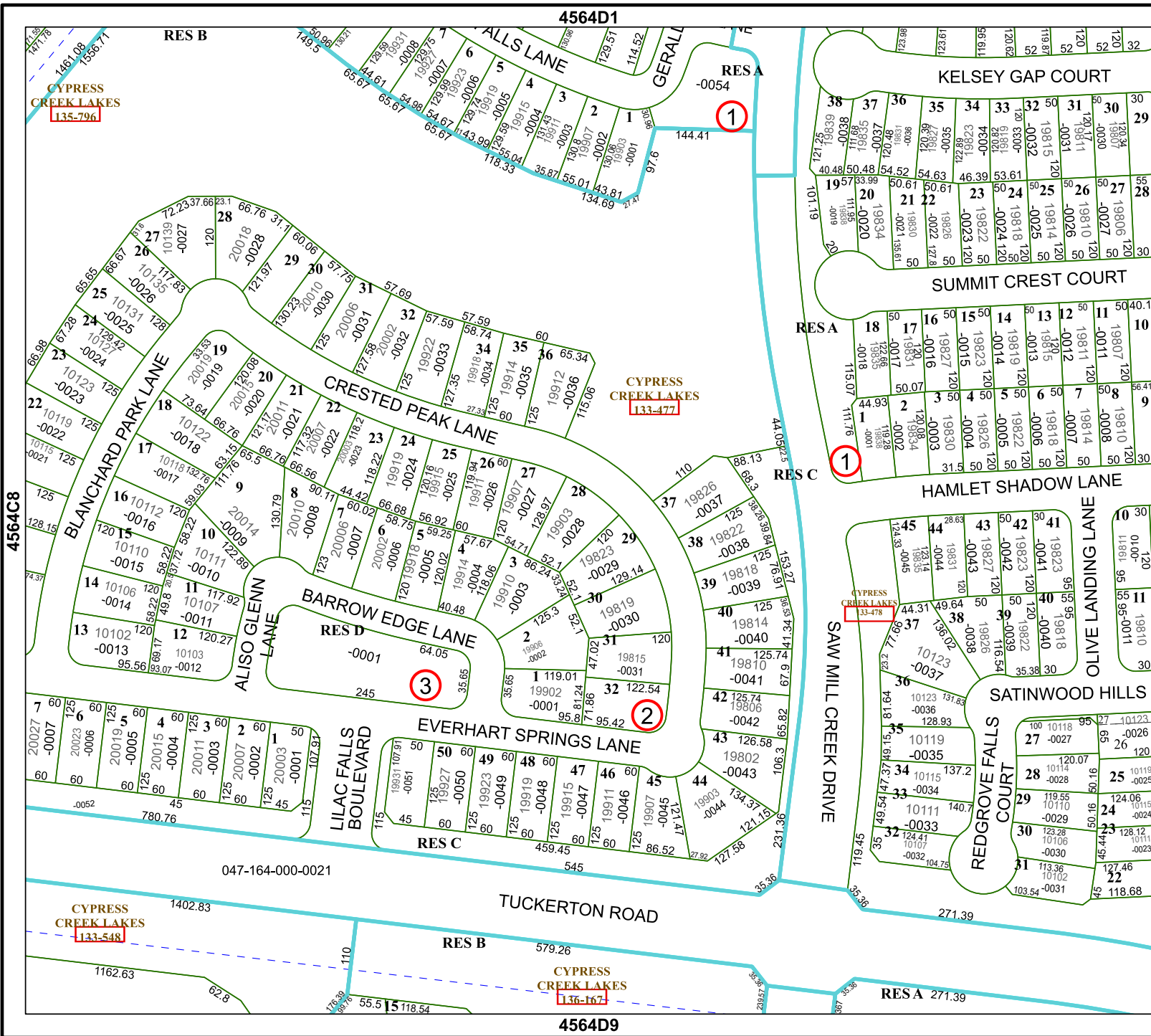
Geospatial or map data maintained by the Harris Central Appraisal District is for informational purposes and may not have been prepared for or be suitable for legal, engineering, or surveying purposes. It does not represent an on-the-ground survey and only represents the approximate location of property boundaries.

MAP LOCATION



FACET 4564D5

3	4	1	2	3
7	8	5	6	7
11	12	9	10	11



CYPRESS CREEK LAKES 135-796

CYPRESS CREEK LAKES 133-477

CYPRESS CREEK LAKES 133-478

CYPRESS CREEK LAKES 133-548

CYPRESS CREEK LAKES 136-167