

Harris Central Appraisal District

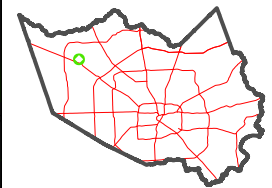


0 45 90 180 Feet

PUBLICATION DATE: 12/30/2023

Geospatial or map data maintained by the Harris Central Appraisal District is for informational purposes and may not have been prepared for or be suitable for legal, engineering, or surveying purposes. It does not represent an on-the-ground survey and only represents the approximate location of property boundaries.

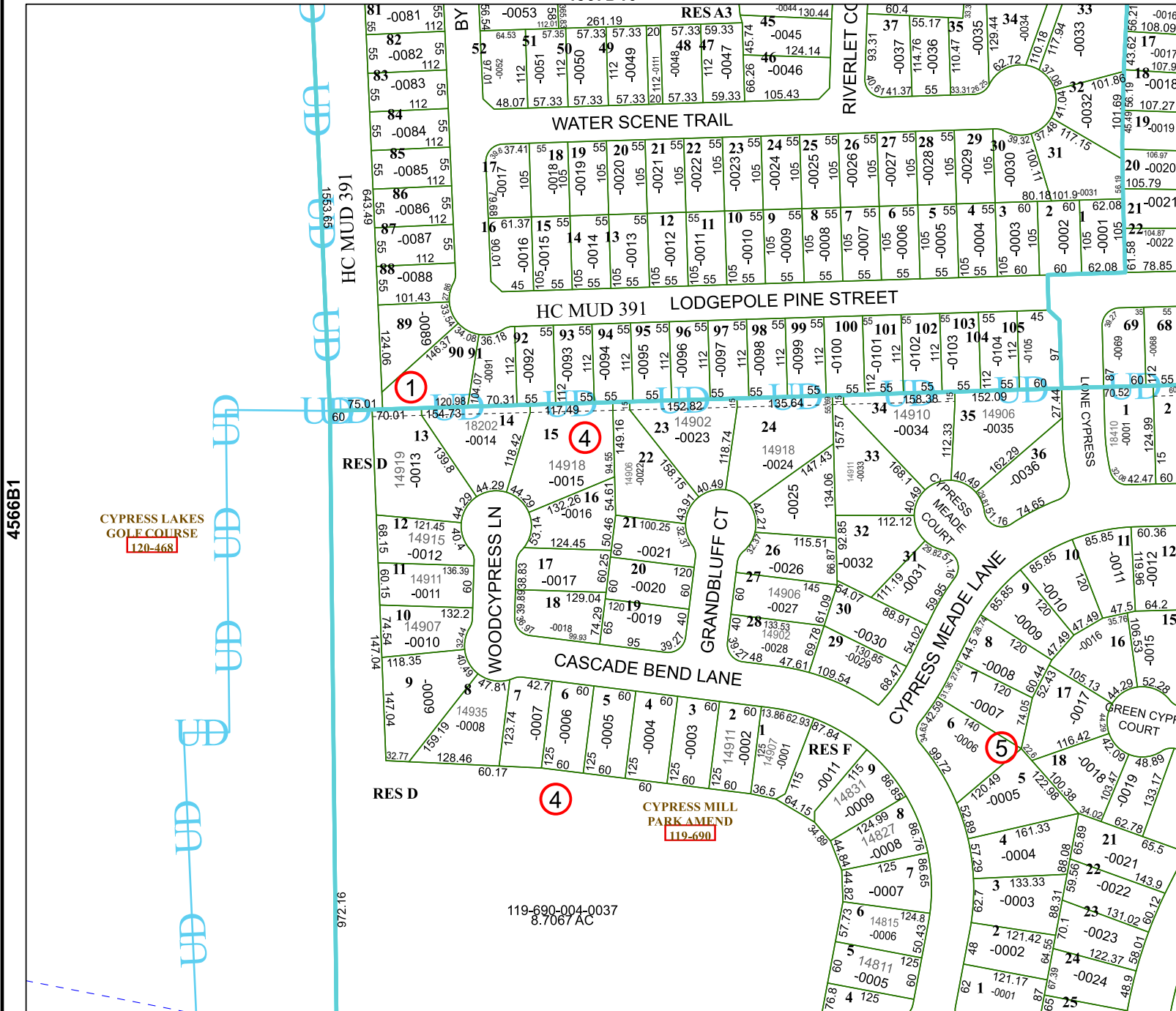
MAP LOCATION



FACET 4566B2

12	9	10	11	12
4	1	2	3	4
8	5	6	7	8

4567D10



4566B6

CYPRESS LAKES GOLF COURSE
120-468

CYPRESS MILL PARK AMEND
119-690

119-690-004-0037
8.7067 AC

4566B1

4566B3