

4566A9

Harris Central Appraisal District



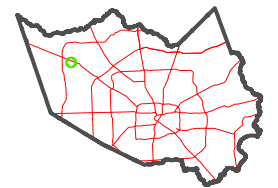
0 45 90 180 Feet

PUBLICATION DATE:
1/23/2025

Geospatial or map data maintained by the Harris Central Appraisal District is for informational purposes and may not have been prepared for or be suitable for legal, engineering, or surveying purposes. It does not represent an on-the-ground survey and only represents the approximate location of property boundaries.



MAP LOCATION

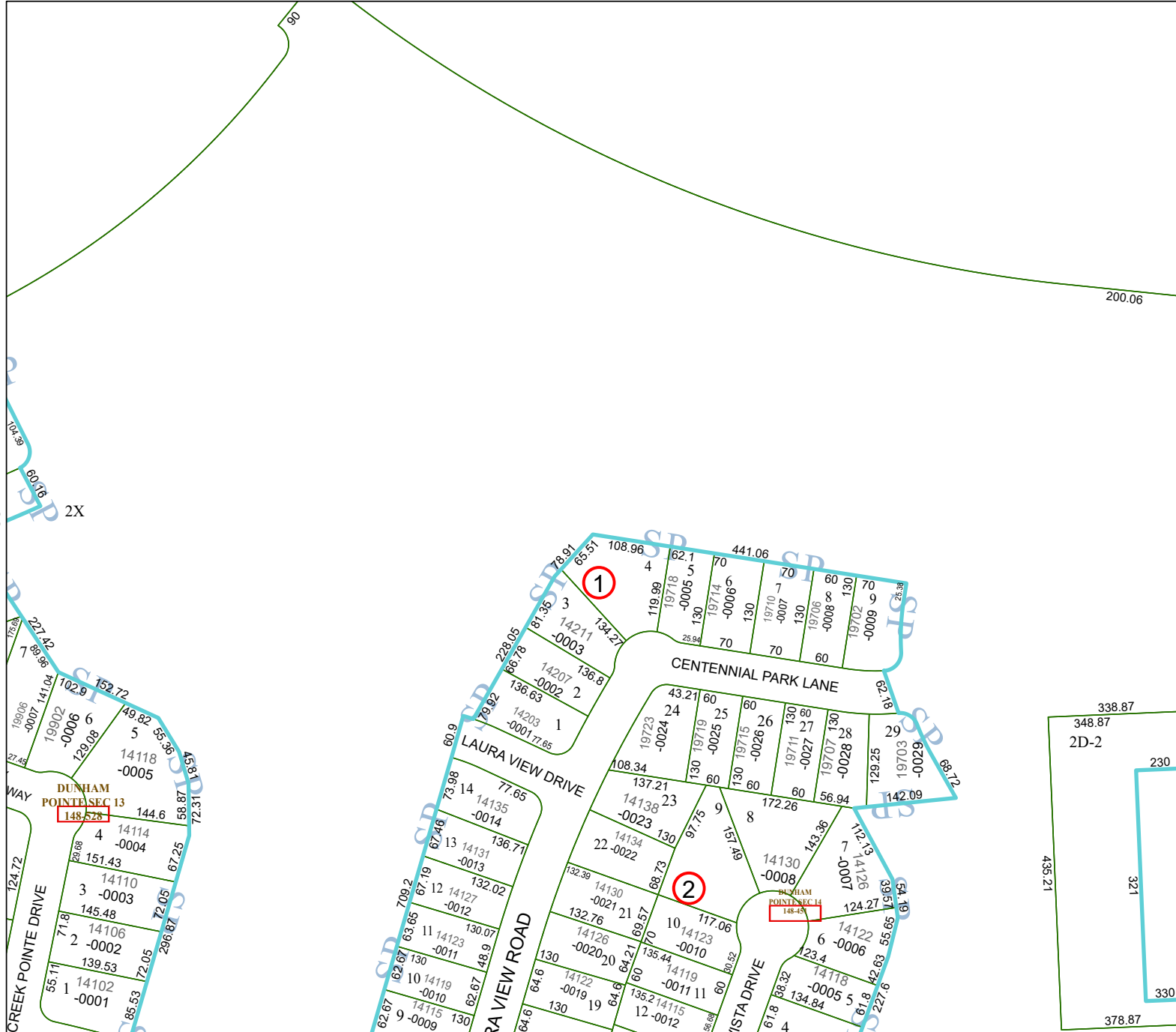


FACET 4566C1

11	12	9	10	11
3	4	1	2	3
7	8	5	6	7

4566C5

4466D4



4566C2

