

4566B10

4566D6

Harris Central Appraisal District

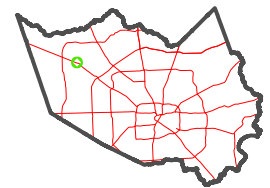


0 45 90 180 Feet

PUBLICATION DATE: 12/30/2023

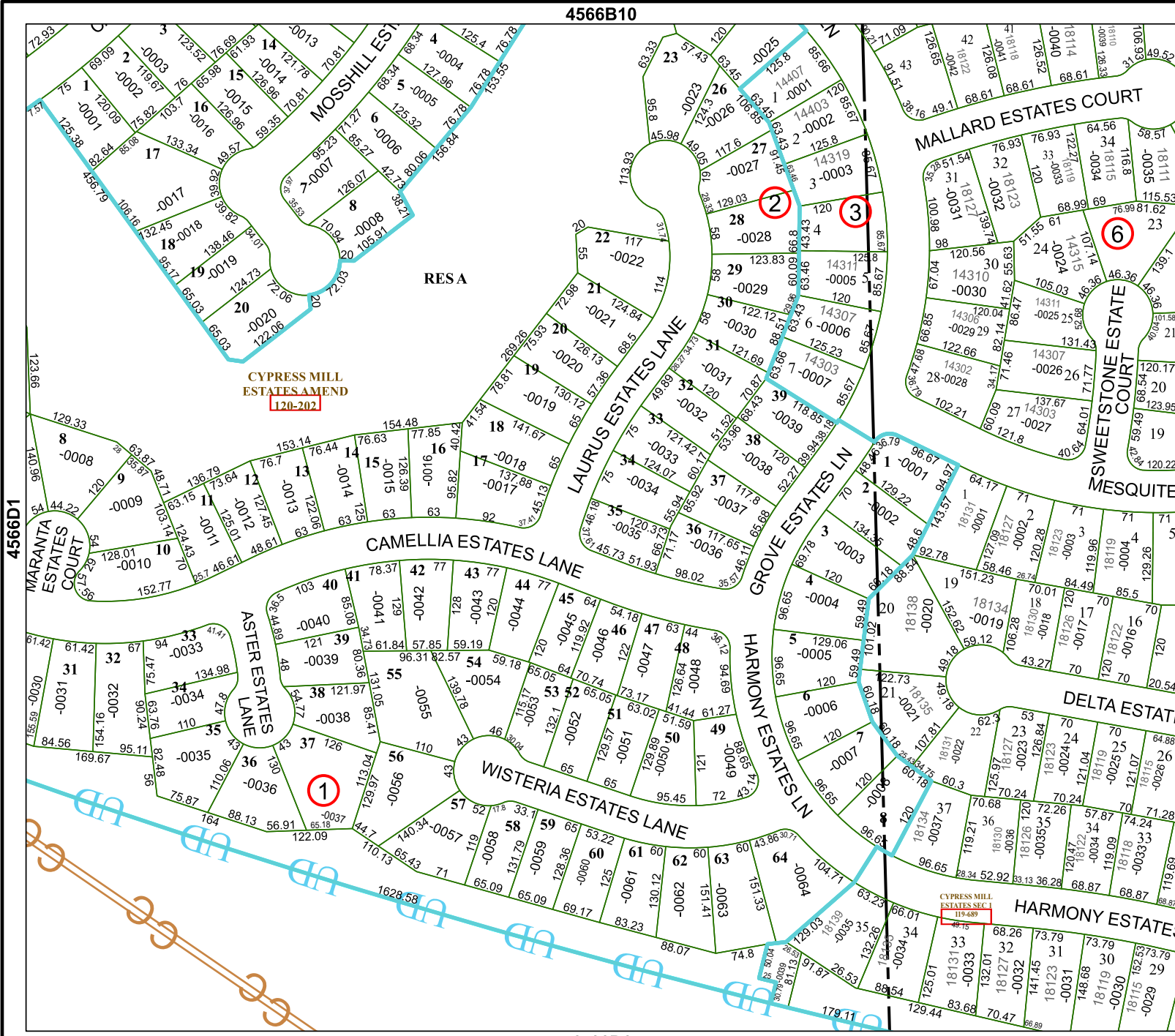
Geospatial or map data maintained by the Harris Central Appraisal District is for informational purposes and may not be suitable for legal, engineering, or surveying purposes. It does not represent an on-the-ground survey and only represents the approximate location of property boundaries.

MAP LOCATION



FACET 4566D2

12	9	10	11	12
4	1	2	3	4
8	5	6	7	8



CYPRESS MILL ESTATES AMEND 120-202

CYPRESS MILL ESTATES SEC 110-489