

Harris Central Appraisal District



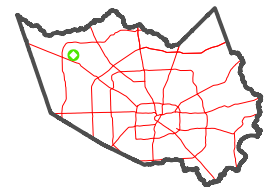
0 45 90 180 Feet

PUBLICATION DATE:
4/22/2024

Geospatial or map data maintained by the Harris Central Appraisal District is for informational purposes and may not have been prepared for or be suitable for legal, engineering, or surveying purposes. It does not represent an on-the-ground survey and only represents the approximate location of property boundaries.



MAP LOCATION



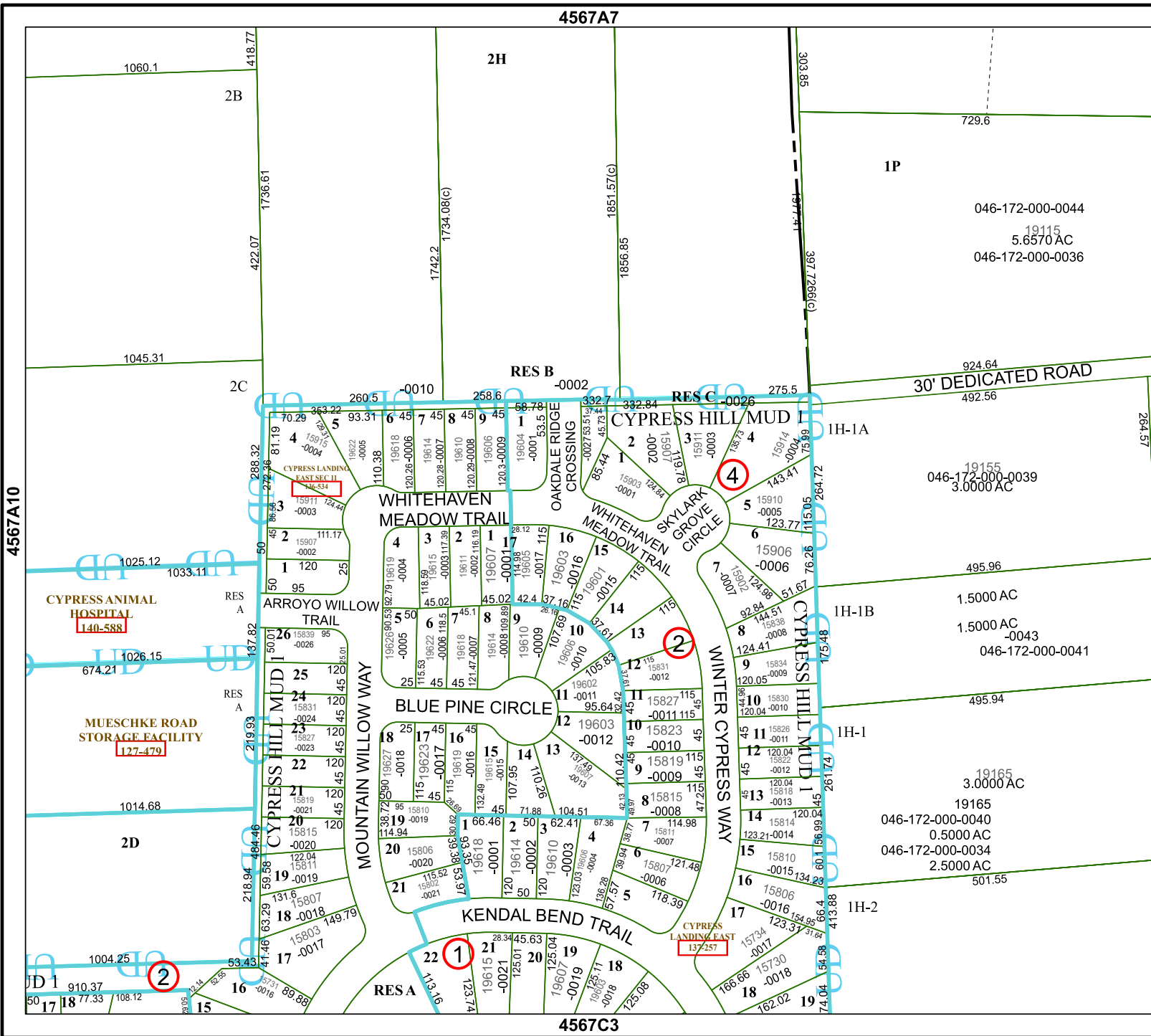
FACET

4567A11

5	6	7	8	5
9	10	11	12	9
1	2	3	4	1

4567A7

4567C3



046-172-000-0044
19115
5.6570 AC
046-172-000-0036

30' DEDICATED ROAD
924.64
492.56

19155
046-172-000-0039
3.0000 AC

1.5000 AC
1.5000 AC
-0043
046-172-000-0041

19165
3.0000 AC
19165
046-172-000-0040
0.5000 AC
046-172-000-0034
2.5000 AC

501.55