

Harris Central Appraisal District

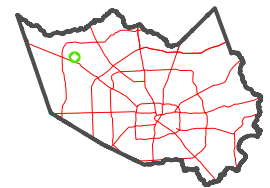


0 45 90 180 Feet

PUBLICATION DATE: 1/5/2023

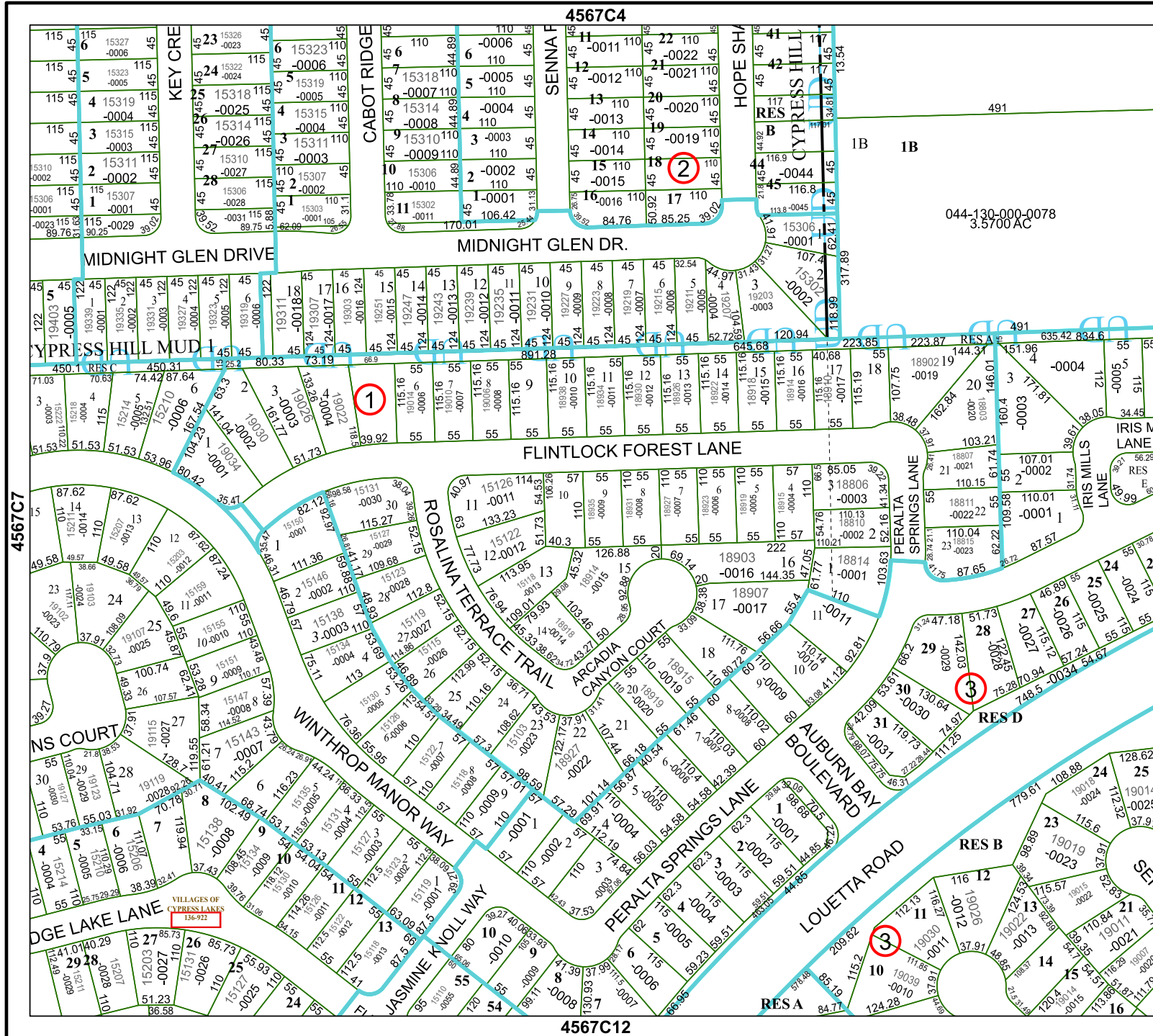
Geospatial or map data maintained by the Harris Central Appraisal District is for informational purposes and may not have been prepared for or be suitable for legal, engineering, or surveying purposes. It does not represent an on-the-ground survey and only represents the approximate location of property boundaries.

MAP LOCATION



FACET 4567C8

2	3	4	5	6
6	7	8	9	10



044-130-000-0078
3.5700 AC

4567C4

4567C12

4567D5

4567C7

VILLAGES OF CYPRESS LAKES
136-922