

4568D5

Harris Central Appraisal District



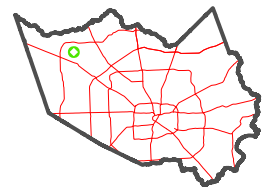
0 45 90 180 Feet

PUBLICATION DATE:
4/22/2024

Geospatial or map data maintained by the Harris Central Appraisal District is for informational purposes and may not have been prepared for or be suitable for legal, engineering, or surveying purposes. It does not represent an on-the-ground survey and only represents the approximate location of property boundaries.



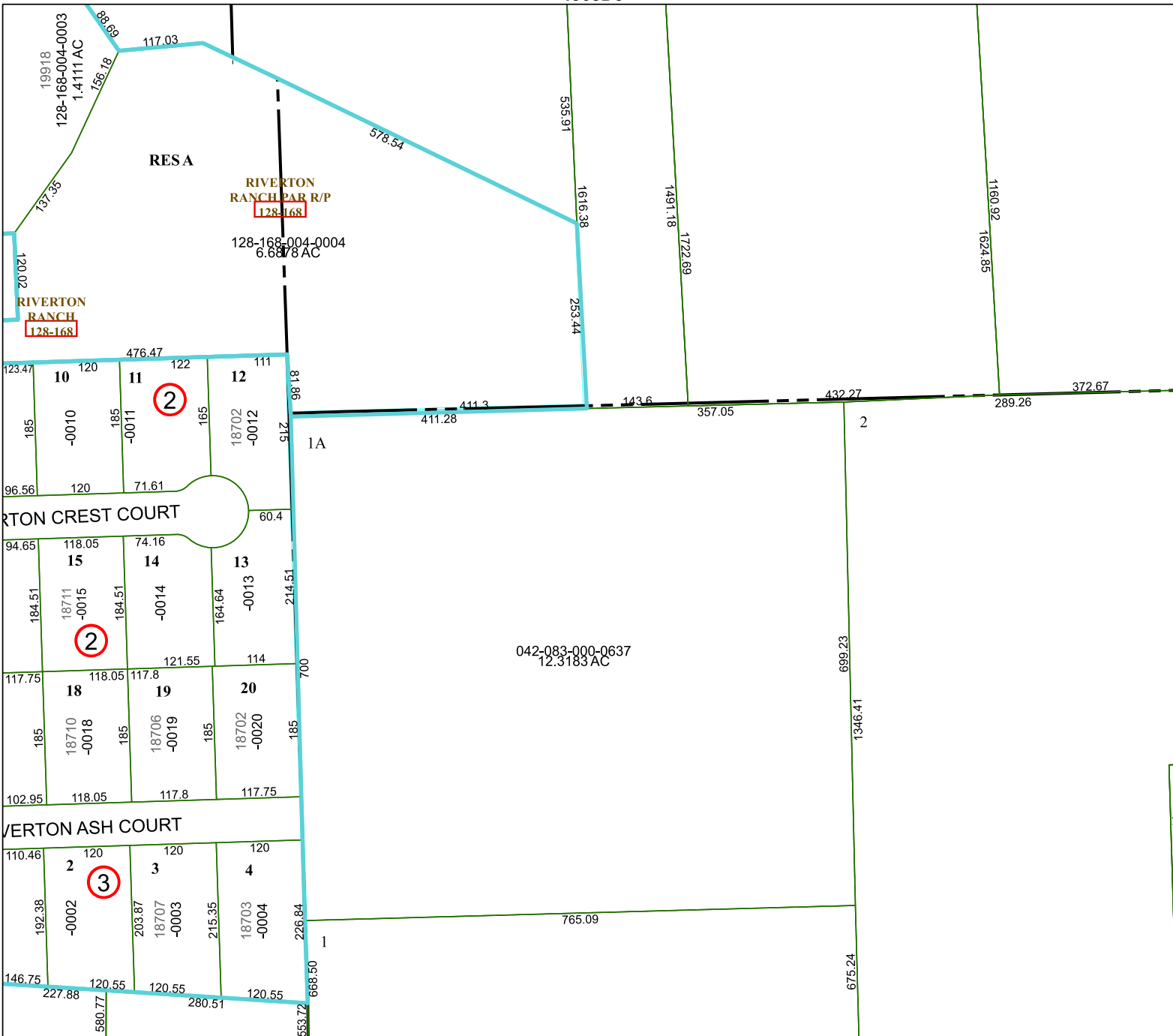
MAP LOCATION



FACET

4568D9

7	8	5	6	7
11	12	9	10	11
3	4	1	2	3



4567B1

4568C12

4568D10

390.09

RESA

RIVERTON RANCH PAR R/P
128-168

128-168-004-0004
6.6878 AC

RIVERTON RANCH
128-168

2

2

3

042-083-000-0637
12.3183 AC

1A

2

1