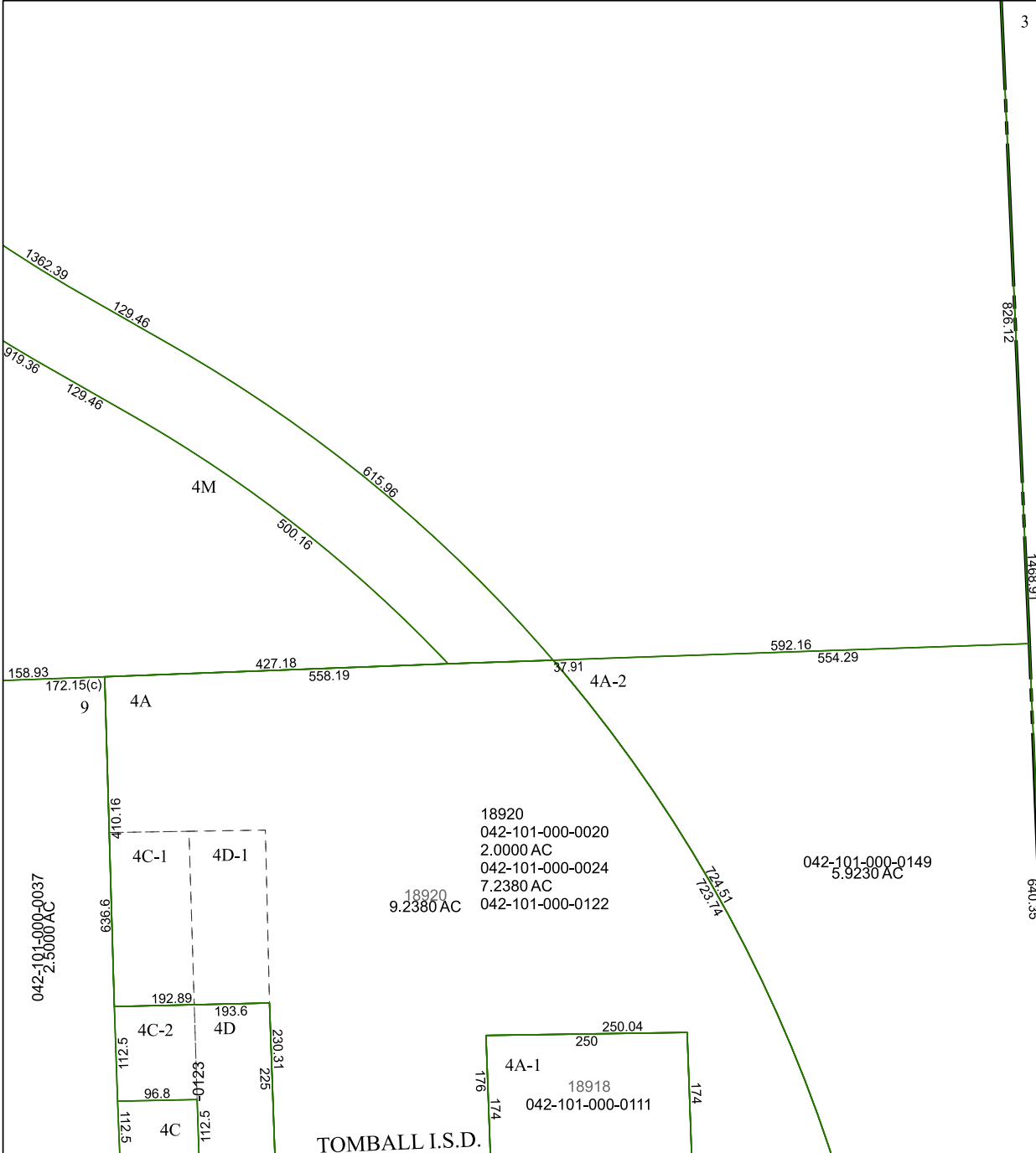


4569A9

3

4469D4



TOMBALL I.S.D.

4569C5

828.12

1468.91

640.35

# Harris Central Appraisal District



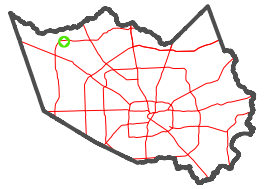
0 45 90 180 Feet

PUBLICATION DATE: 1/17/2023

Geospatial or map data maintained by the Harris Central Appraisal District is for informational purposes and may not have been prepared for or be suitable for legal, engineering, or surveying purposes. It does not represent an on-the-ground survey and only represents the approximate location of property boundaries.



## MAP LOCATION



# FACET 4569C1

11	12	9	10	11
3	4	1	2	3
7	8	5	6	7

044-123-000-0020  
32.2930 AC

4569C2