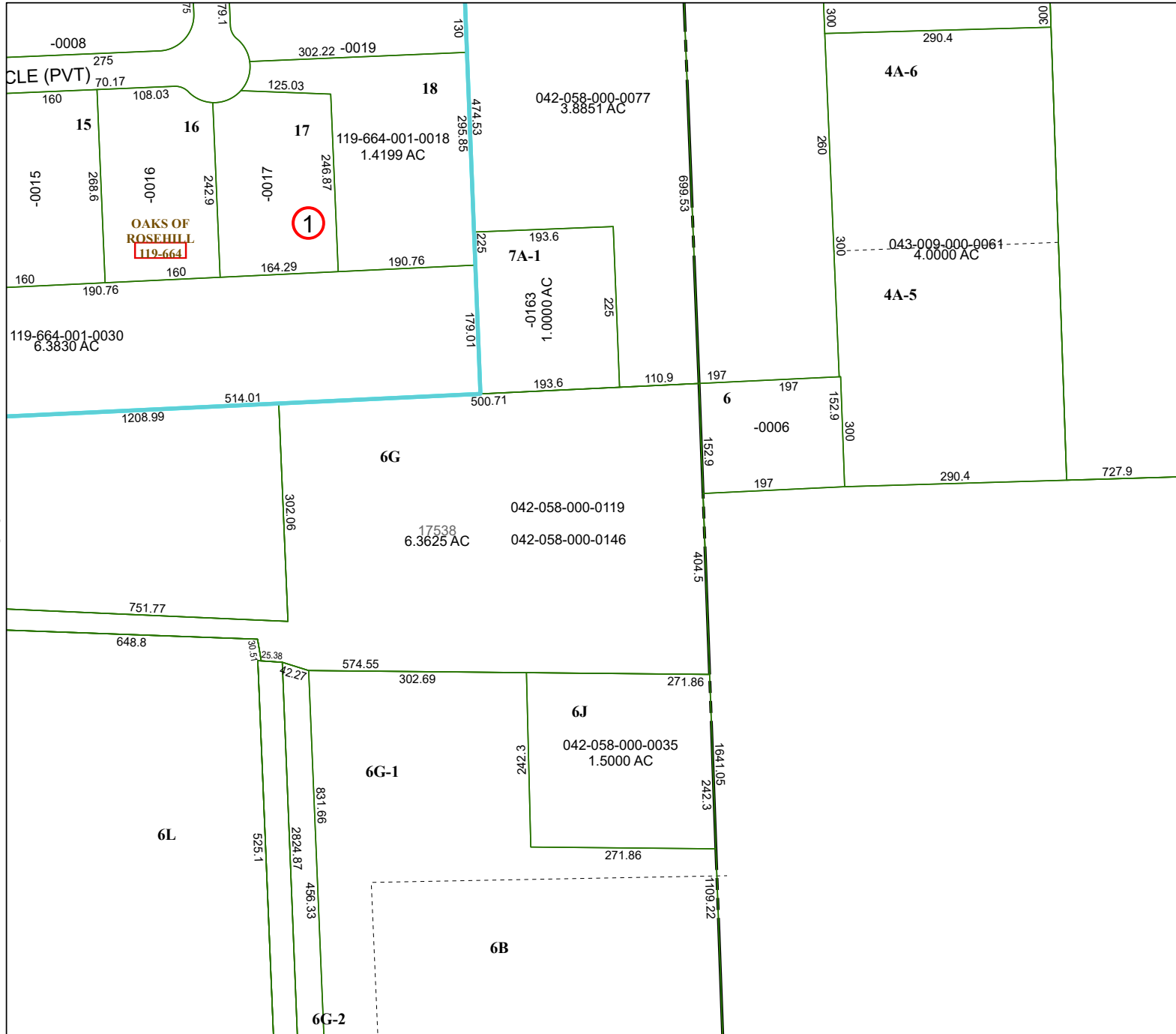


4570B8



4570D4

Harris Central Appraisal District



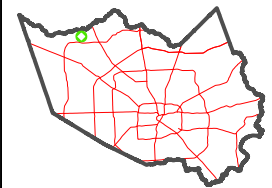
0 50 100 200 Feet

PUBLICATION DATE:
12/8/2025

Geospatial or map data maintained by the Harris Central Appraisal District is for informational purposes and may **not** have been prepared for or be suitable for legal, engineering, or surveying purposes. It does **not** represent an on-the-ground survey and only represents the approximate location of property boundaries.



MAP LOCATION



FACET 4570B12

6	7	8	5	6
10	11	12	9	10
2	3	4	1	2

4570B11

4670A9