

4571C1

44D

22827
040-189-000-0310
7.4400 AC

Harris Central Appraisal District



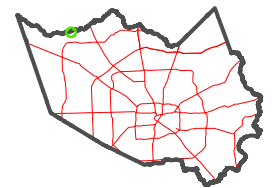
0 45 90 180 Feet

PUBLICATION DATE:
1/5/2023

Geospatial or map data maintained by the Harris Central Appraisal District is for informational purposes and may not have been prepared for or be suitable for legal, engineering, or surveying purposes. It does not represent an on-the-ground survey and only represents the approximate location of property boundaries.



MAP LOCATION



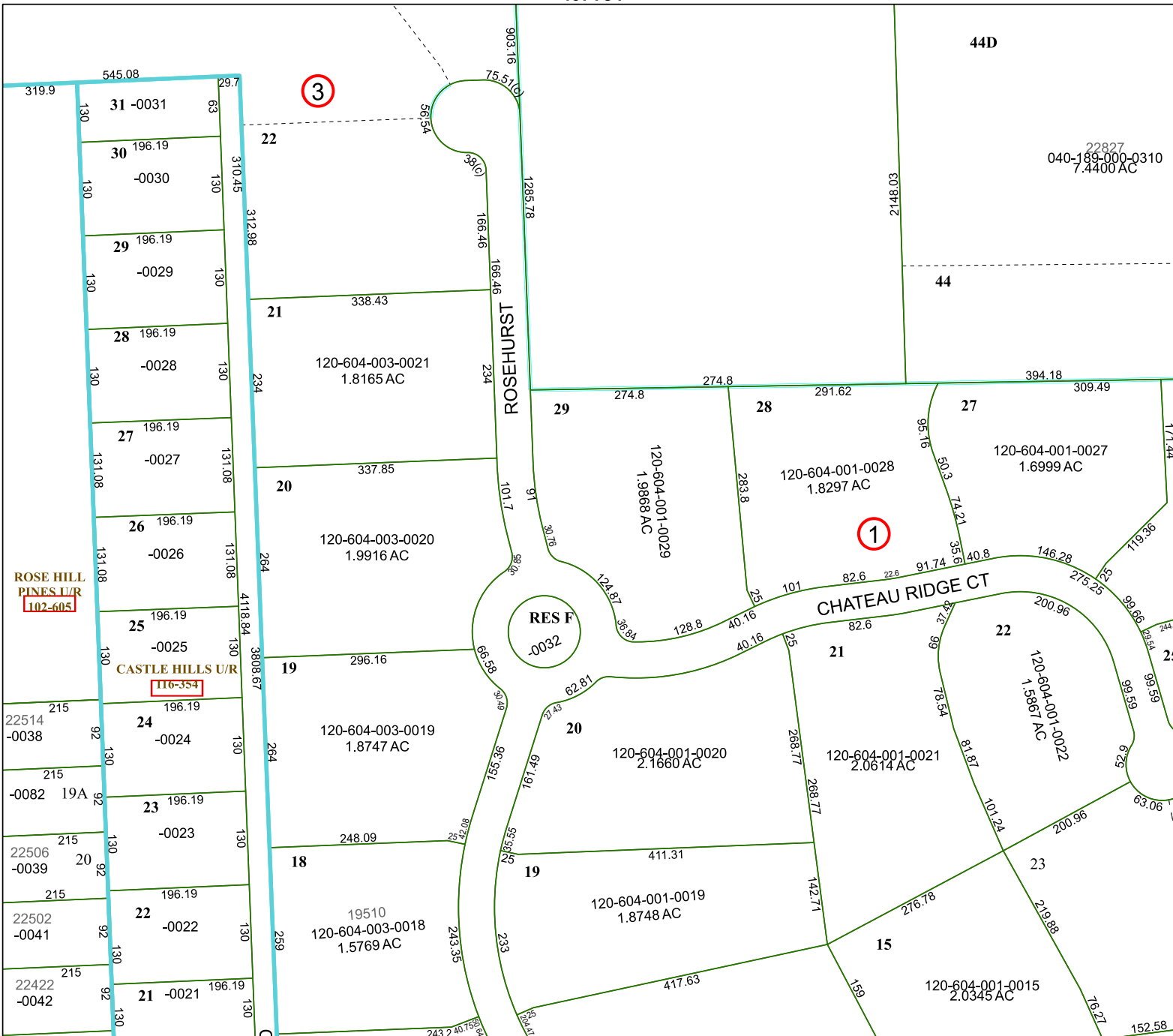
FACET 4571C5

3	4	1	2	3
7	8	5	6	7
11	12	9	10	11

4571C9

4471D8

4571C6



ROSE HILL
PINES U/R
102-605

CASTLE HILLS U/R
116-354