

4571B11

Harris Central Appraisal District



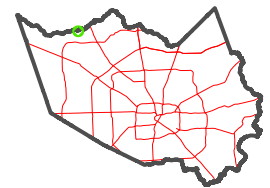
0 45 90 180 Feet

PUBLICATION DATE:
12/30/2023

Geospatial or map data maintained by the Harris Central Appraisal District is for informational purposes and may not have been prepared for or be suitable for legal, engineering, or surveying purposes. It does not represent an on-the-ground survey and only represents the approximate location of property boundaries.



MAP LOCATION



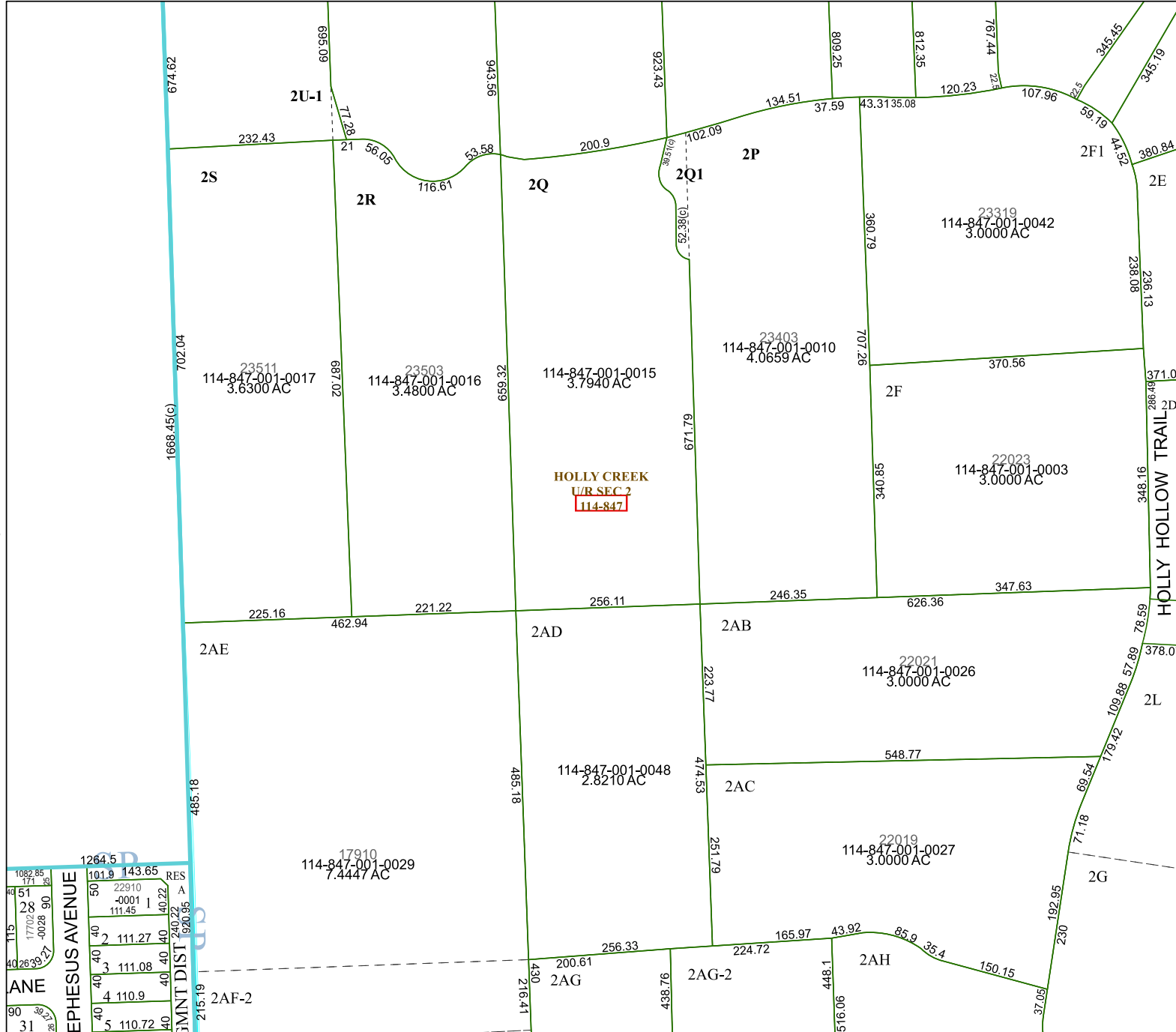
FACET 4571D3

9	10	11	12	9
1	2	3	4	1
5	6	7	8	5

4571D2

4571D4

4571D7



1082.85	171.15	RES
51	28	0001
1770.02	1070.28	90
40	26	39
15	17	02
11	11	27
0P	2	111.27
0P	3	111.08
0P	4	110.9
0P	5	110.72