

4658A1

# Harris Central Appraisal District



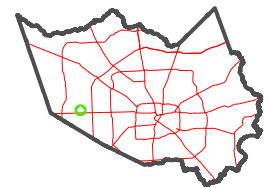
0 45 90 180 Feet

PUBLICATION DATE: 1/5/2023

Geospatial or map data maintained by the Harris Central Appraisal District is for informational purposes and may not have been prepared for or be suitable for legal, engineering, or surveying purposes. It does not represent an on-the-ground survey and only represents the approximate location of property boundaries.



MAP LOCATION



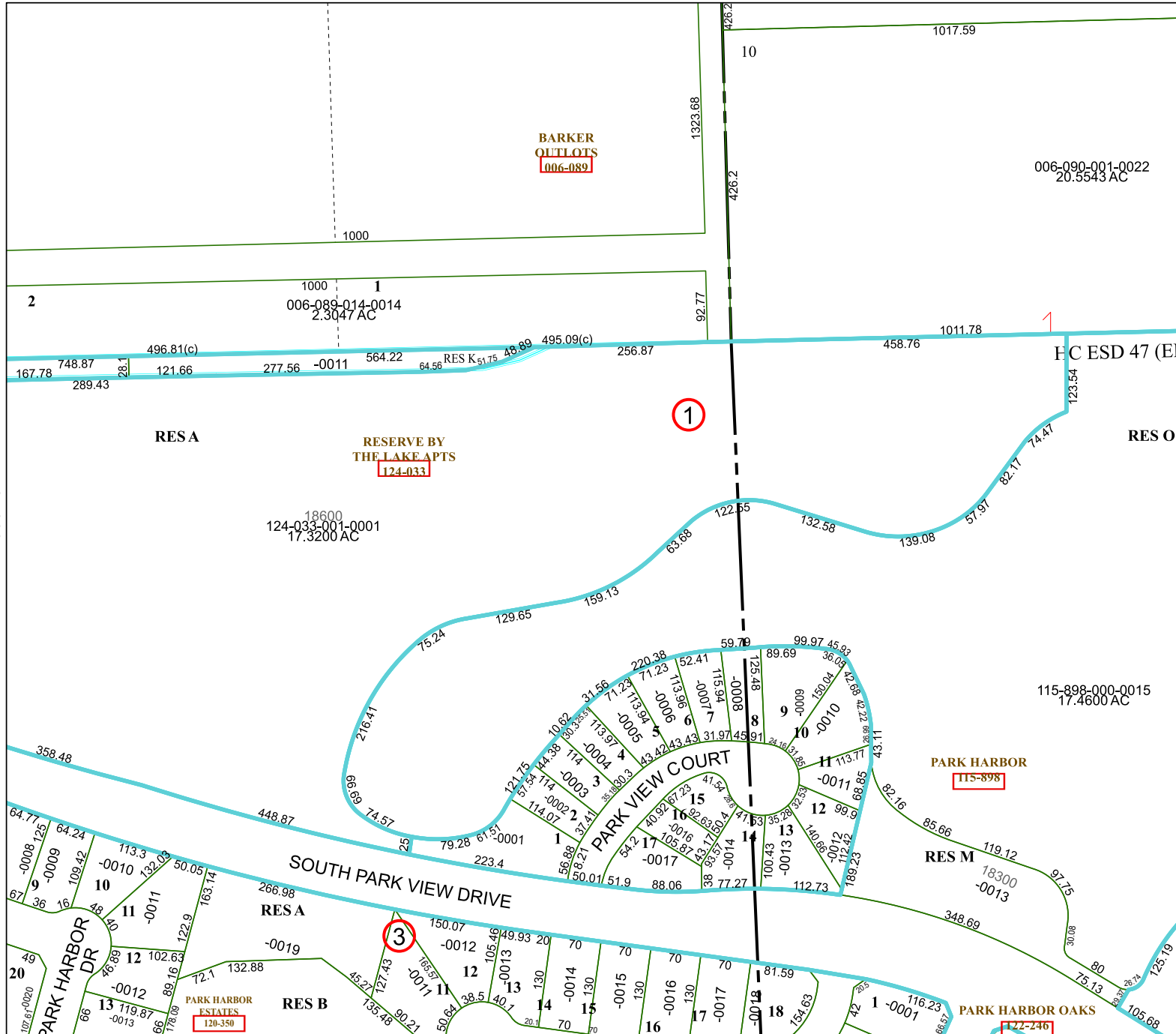
## FACET 4658A5

3	4	1	2	3
7	8	5	6	7
11	12	9	10	11

4558B8

4658A6

4658A9



RES A

RESERVE BY THE LAKE APTS  
124-033

18600  
124-033-001-0001  
17.3200 AC

1

RES O

115-898-000-0015  
17.4600 AC

PARK HARBOR  
115-898

SOUTH PARK VIEW DRIVE

RES M

PARK HARBOR OAKS  
122-246

PARK HARBOR ESTATES  
120-350

3

RES B