

4660A8

4660C4

Harris County Appraisal District

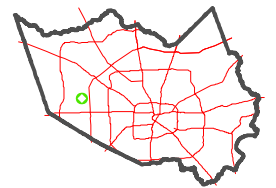


0 50 100 200 Feet

PUBLICATION DATE: 1/7/2021

Geospatial or map data maintained by the Harris County Appraisal District is for informational purposes and may not be prepared for or be suitable for legal, engineering, or surveying purposes. It does not represent an on-the-ground survey and only represents the approximate location of property boundaries.

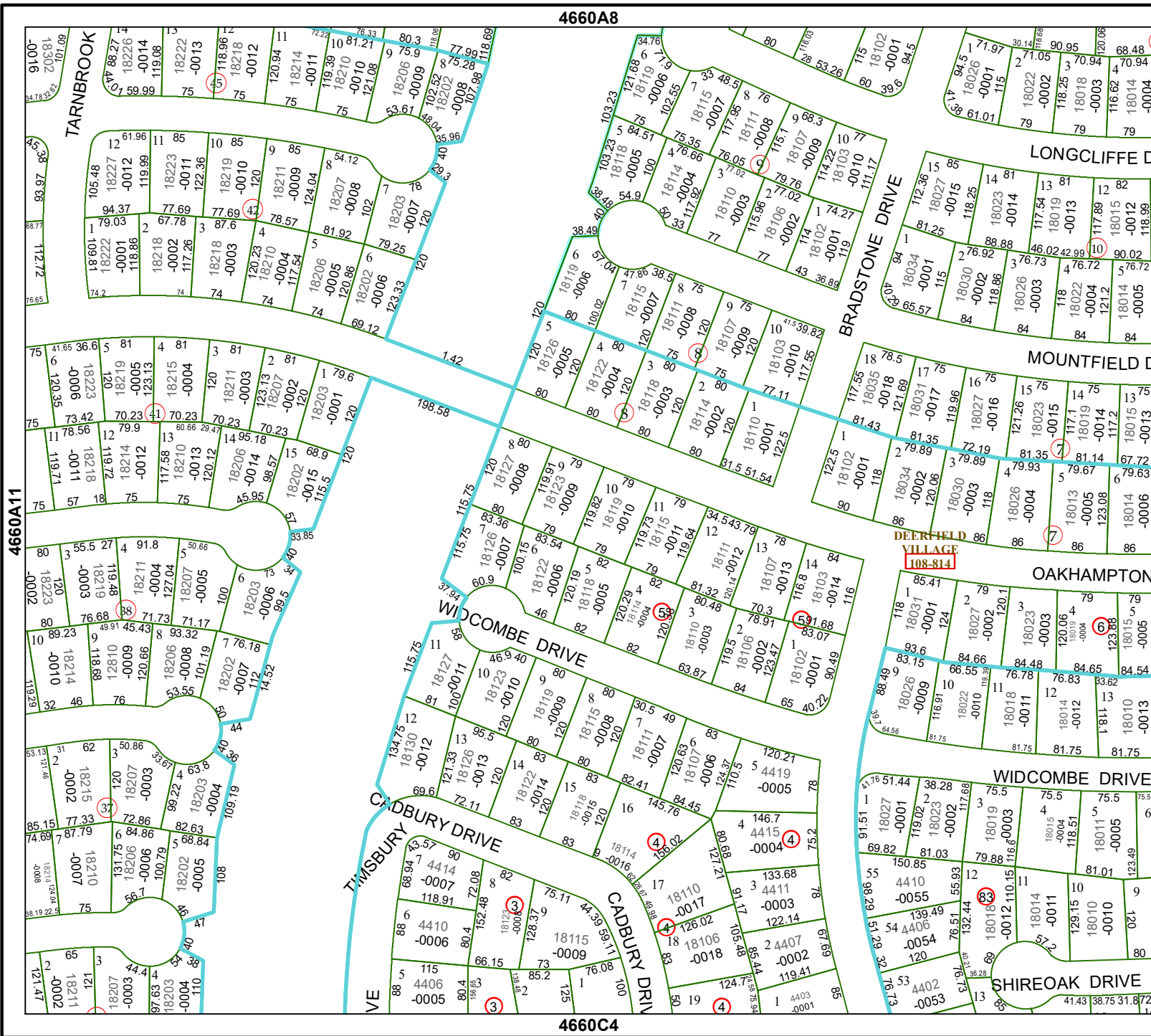
MAP LOCATION



FACET

4660A12

6	7	8	5	6
10	11	12	9	10
2	3	4	1	2



4660A11

4660B9