

# Harris Central Appraisal District

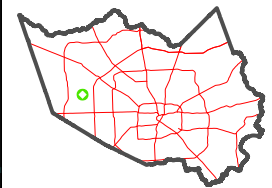


0 45 90 180 Feet

PUBLICATION DATE:  
2/13/2024

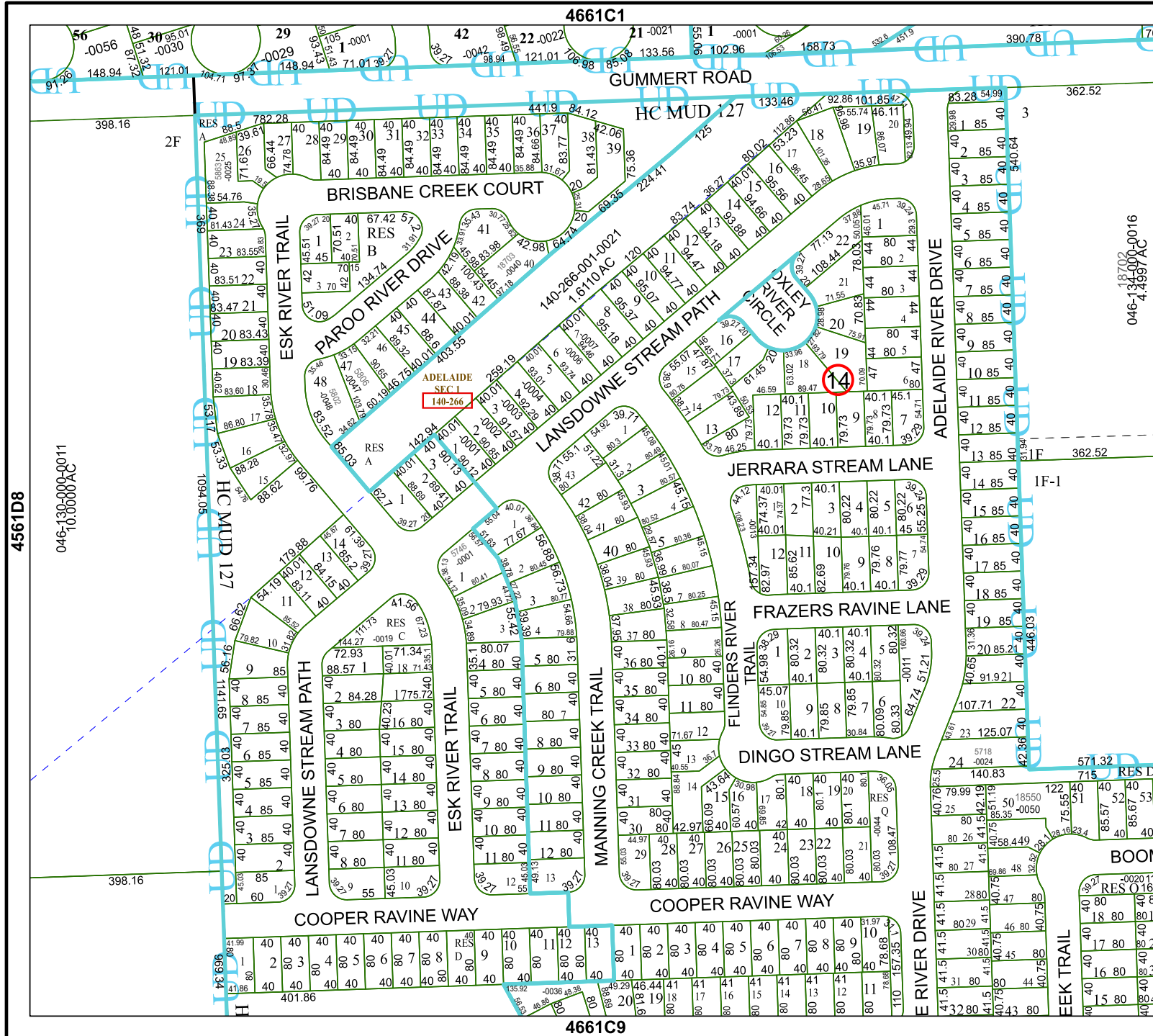
Geospatial or map data maintained by the Harris Central Appraisal District is for informational purposes and may not have been prepared for or be suitable for legal, engineering, or surveying purposes. It does not represent an on-the-ground survey and only represents the approximate location of property boundaries.

MAP LOCATION



## FACET 4661C5

3	4	1	2	3
7	8	5	6	7
11	12	9	10	11



4561D8

046-130-000-0011  
10.0000AC

4661C1

4661C9

18702  
046-134-000-0016  
4.4597AC

4661C6

BOOM