

Harris Central Appraisal District

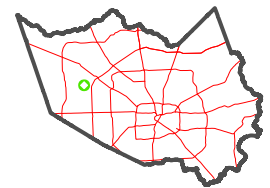


0 45 90 180 Feet

PUBLICATION DATE:
1/5/2023

Geospatial or map data maintained by the Harris Central Appraisal District is for informational purposes and may not have been prepared for or be suitable for legal, engineering, or surveying purposes. It does not represent an on-the-ground survey and only represents the approximate location of property boundaries.

MAP LOCATION

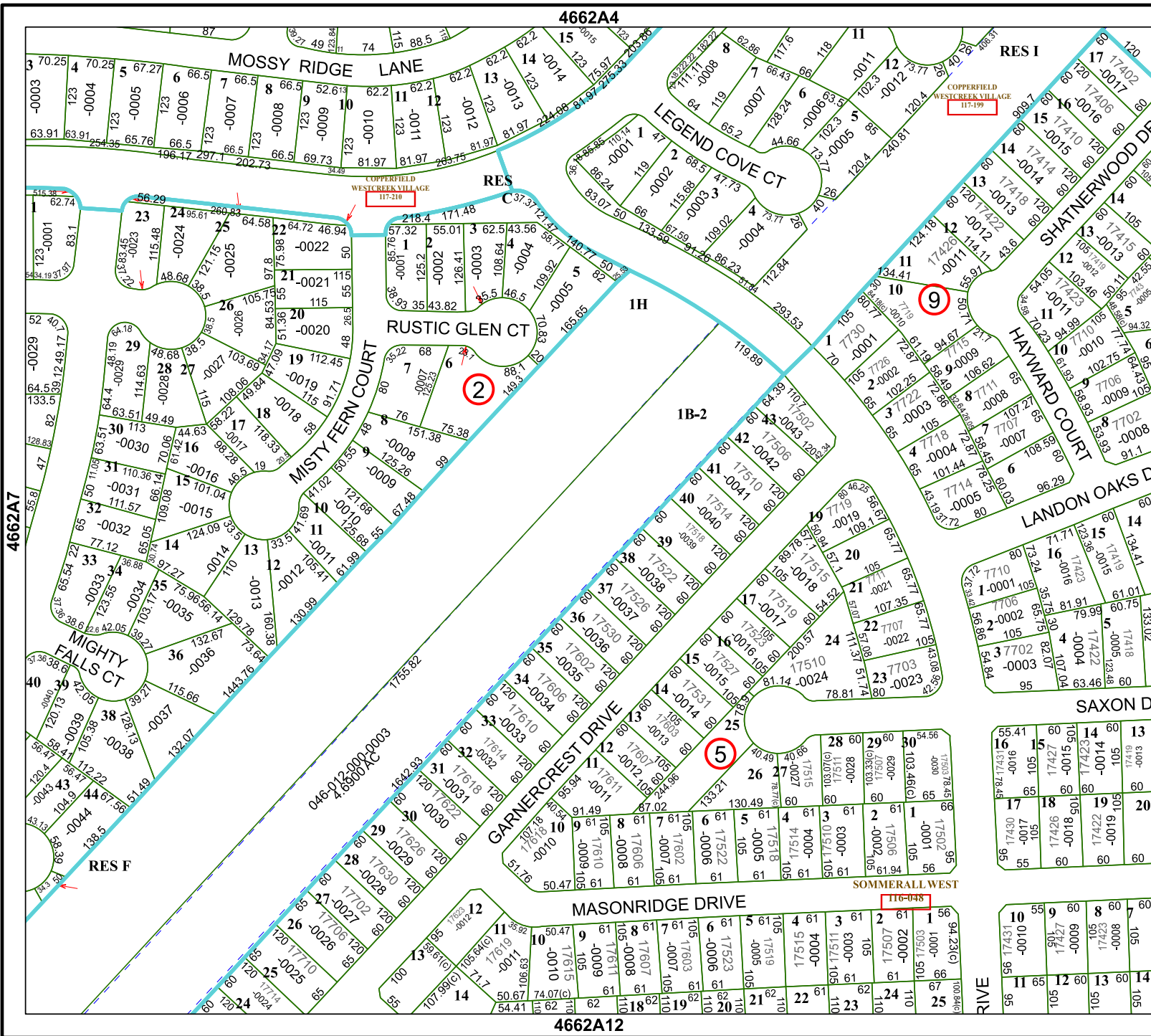


FACET 4662A8

2	3	4	1	2
6	7	8	5	6
10	11	12	9	10

4662A4

4662A12



4662A7

4662B5

SOMMERALL WEST

RIVE