

Harris Central Appraisal District

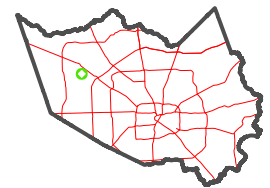


0 45 90 180 Feet

PUBLICATION DATE: 1/5/2023

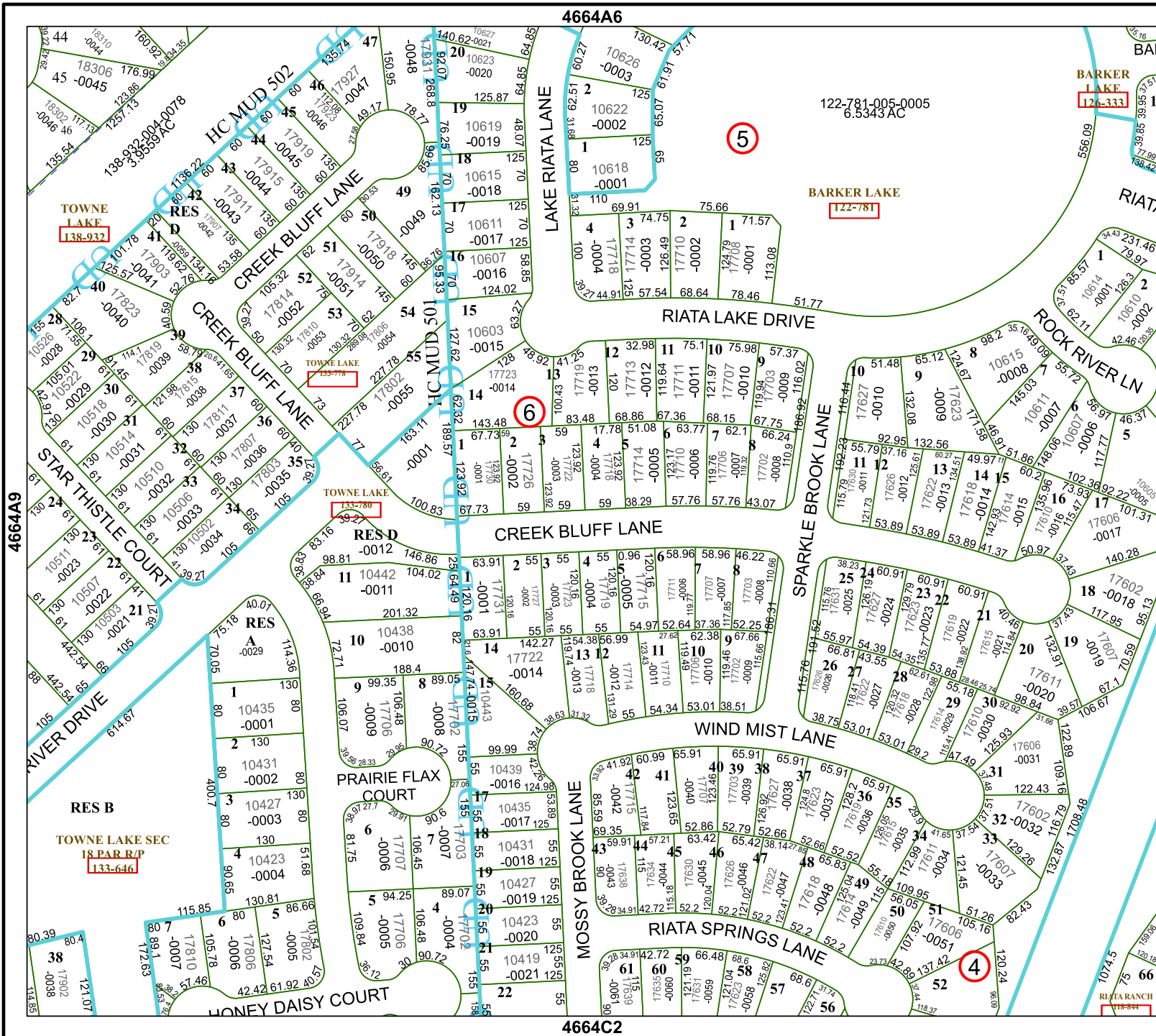
Geospatial or map data maintained by the Harris Central Appraisal District is for informational purposes and may not have been prepared for or be suitable for legal, engineering, or surveying purposes. It does not represent an on-the-ground survey and only represents the approximate location of property boundaries.

MAP LOCATION



FACET 4664A10

8	5	6	7	8
12	9	10	11	12
4	1	2	3	4



4664A6

5

6

4664A9

4664A11

4664C2

BARKER LAKE
126-333

BARKER LAKE
122-781

TOWNE LAKE
133-780

TOWNE LAKE
138-932

TOWNE LAKE SEC
18 PAR R/P
133-646

RHARRIS
118-944