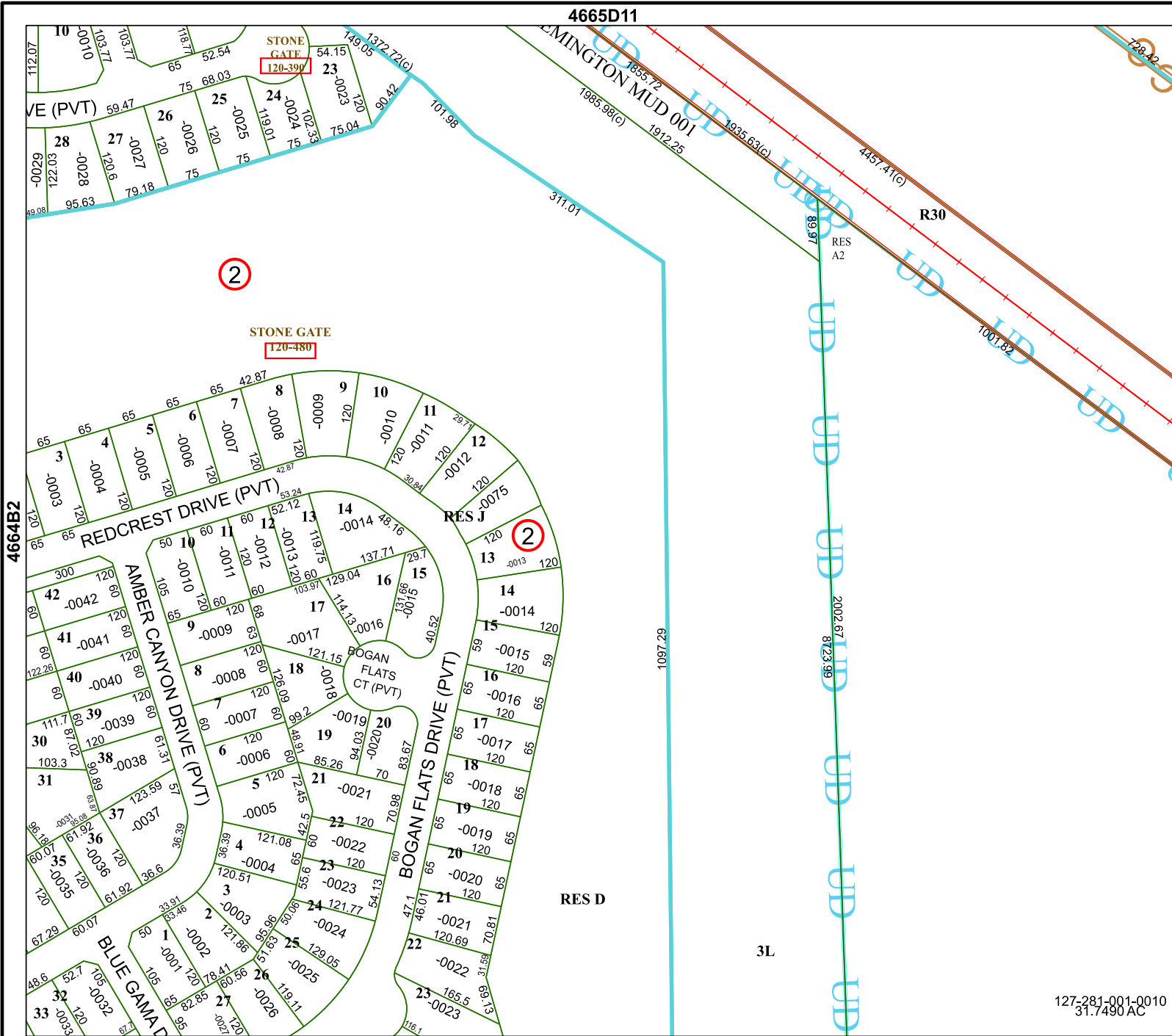


4665D11

4664B7



# Harris Central Appraisal District

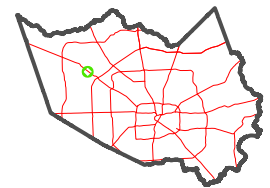


0 45 90 180 Feet

PUBLICATION DATE:  
1/9/2025

Geospatial or map data maintained by the Harris Central Appraisal District is for informational purposes and may **not** have been prepared for or be suitable for legal, engineering, or surveying purposes. It does **not** represent an on-the-ground survey and only represents the approximate location of property boundaries.

MAP LOCATION



## FACET

4664B3

9	10	11	12	9
1	2	3	4	1
5	6	7	8	5

127-281-001-0010  
31.7490 AC