

4664A12

RIATARANCH
118-844

RES D

119-788-005-0031
6.8149 AC

RIATARANCH
119-788

Harris Central Appraisal District



RES E1
RES E2
RES E3
RES E4

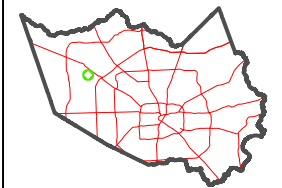
0 45 90 180 Feet

PUBLICATION DATE:
1/5/2023

Geospatial or map data maintained by the Harris Central Appraisal District is for informational purposes and may not have been prepared for or be suitable for legal, engineering, or surveying purposes. It does not represent an on-the-ground survey and only represents the approximate location of property boundaries.



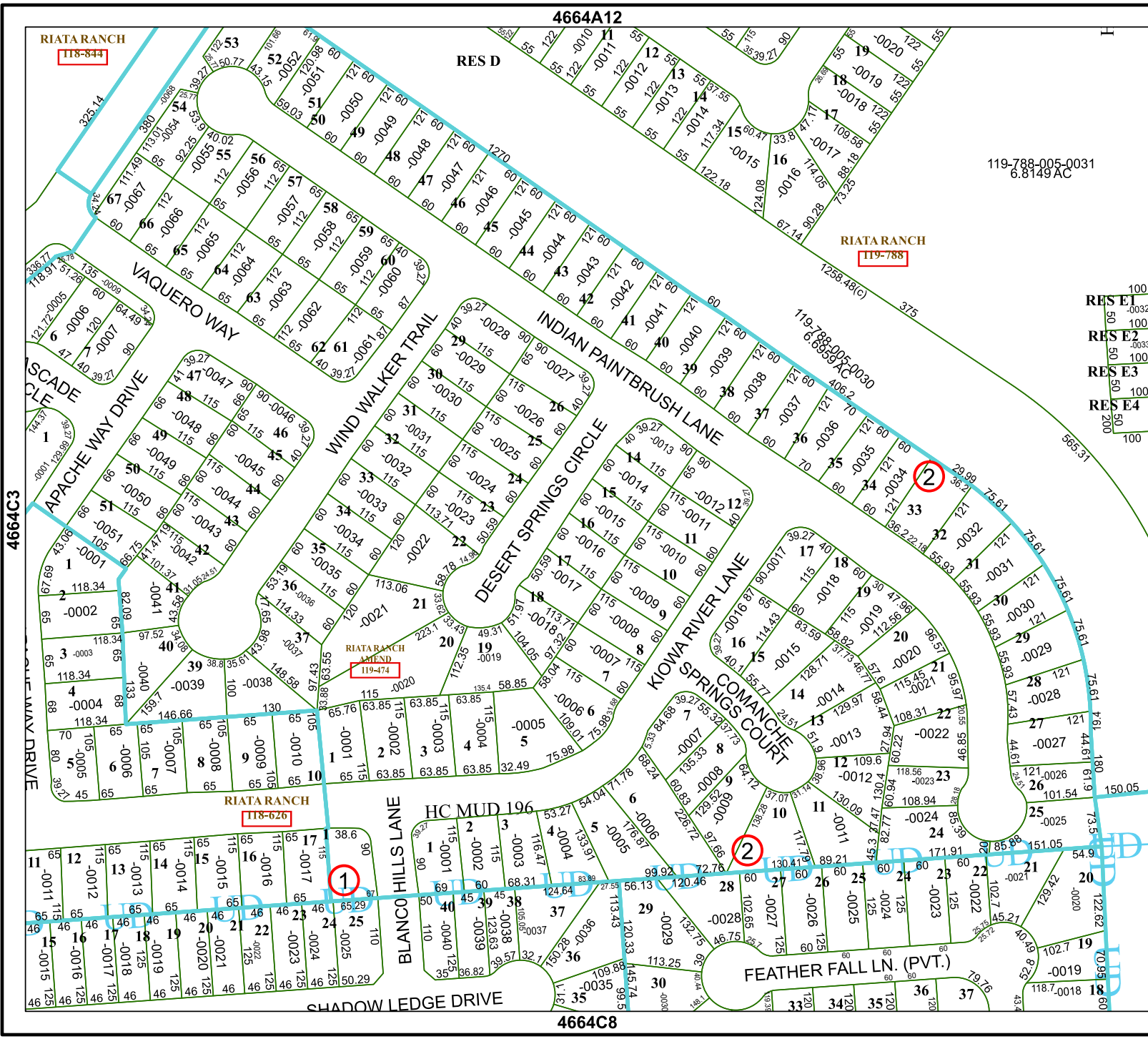
MAP LOCATION



FACET 4664C4

10	11	12	9	10
2	3	4	1	2
6	7	8	5	6

4664C8



4664C3

4664D1

RIATARANCH
118-626

RIATARANCH
119-474

FEATHER FALL LN. (PVT.)