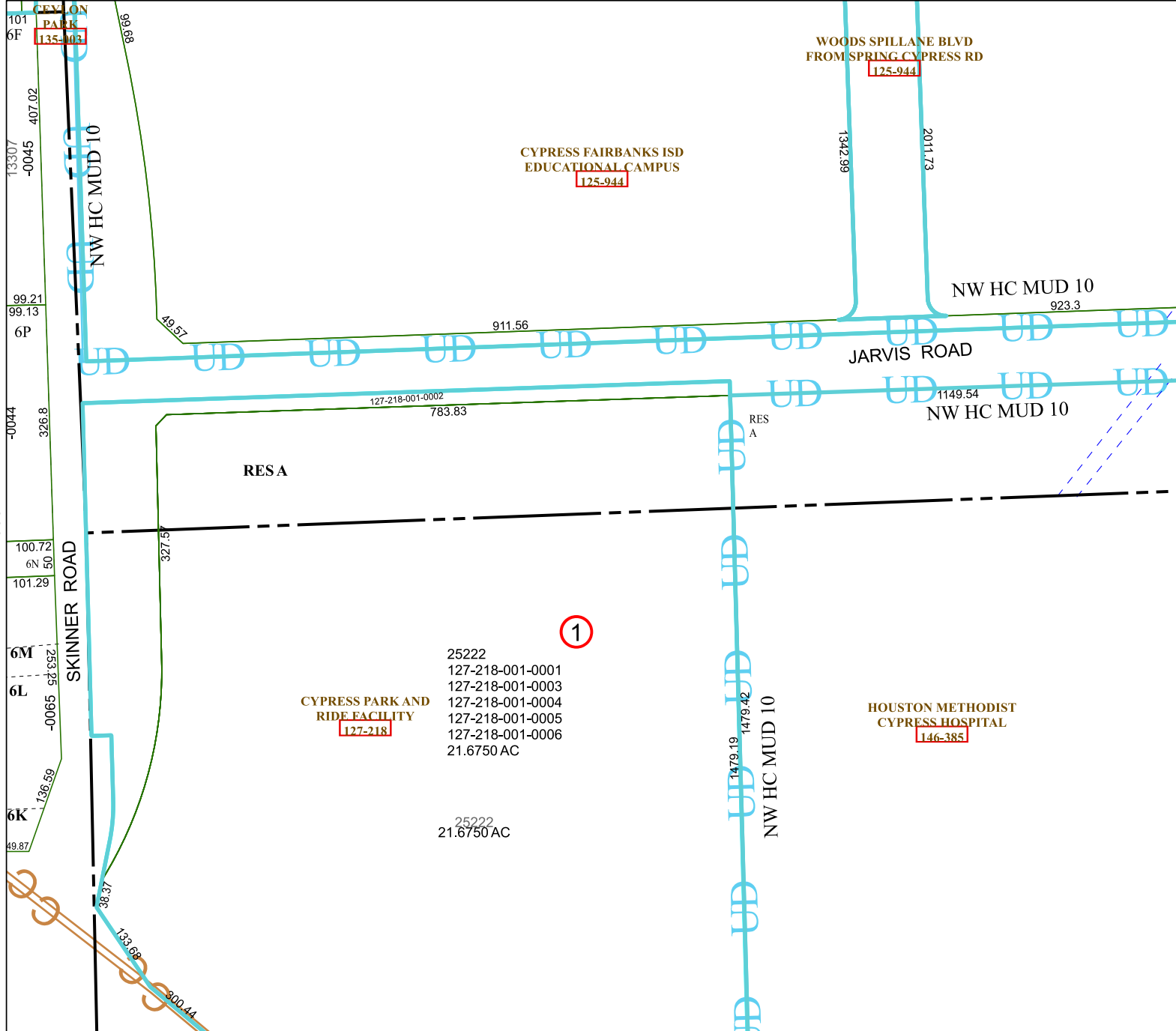


4666C10



Harris Central Appraisal District



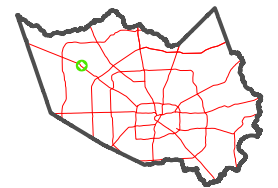
0 45 90 180 Feet

PUBLICATION DATE:
1/9/2025

Geospatial or map data maintained by the Harris Central Appraisal District is for informational purposes and may not have been prepared for or be suitable for legal, engineering, or surveying purposes. It does not represent an on-the-ground survey and only represents the approximate location of property boundaries.



MAP LOCATION



FACET

4665A2

12	9	10	11	12
4	1	2	3	4
8	5	6	7	8

4665A6

4665A1

4665A3

1

CYPRESS PARK AND RIDE FACILITY
127-218

25222
127-218-001-0001
127-218-001-0003
127-218-001-0004
127-218-001-0005
127-218-001-0006
21.6750 AC

25222
21.6750 AC

HOUSTON METHODIST CYPRESS HOSPITAL
146-385

NW HC MUD 10

CYPRESS FAIRBANKS ISD EDUCATIONAL CAMPUS
125-944

WOODS SPILLANE BLVD FROM SPRING CYPRESS RD
125-944

NW HC MUD 10
923.3

JARVIS ROAD

NW HC MUD 10
1149.54

RES A

RES A

CYPRESS PARK
135-111

NW HC MUD 10

SKINNER ROAD

101 6F
13307 -0045
407.02
99.21
99.13
6P
-0044
326.8
100.72
50
101.29
6M
253.25
6L
-0065
6900
136.59
6K
49.87

89.86

49.57

911.56

1342.99

2011.73

127-218-001-0002

783.83

327.5

1479.19

1479.42

38.37

133.68

300.44