

Harris Central Appraisal District

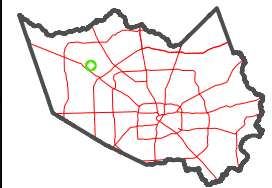


0 45 90 180 Feet

PUBLICATION DATE: 12/30/2023

Geospatial or map data maintained by the Harris Central Appraisal District is for informational purposes and may not have been prepared for or be suitable for legal, engineering, or surveying purposes. It does not represent an on-the-ground survey and only represents the approximate location of property boundaries.

MAP LOCATION

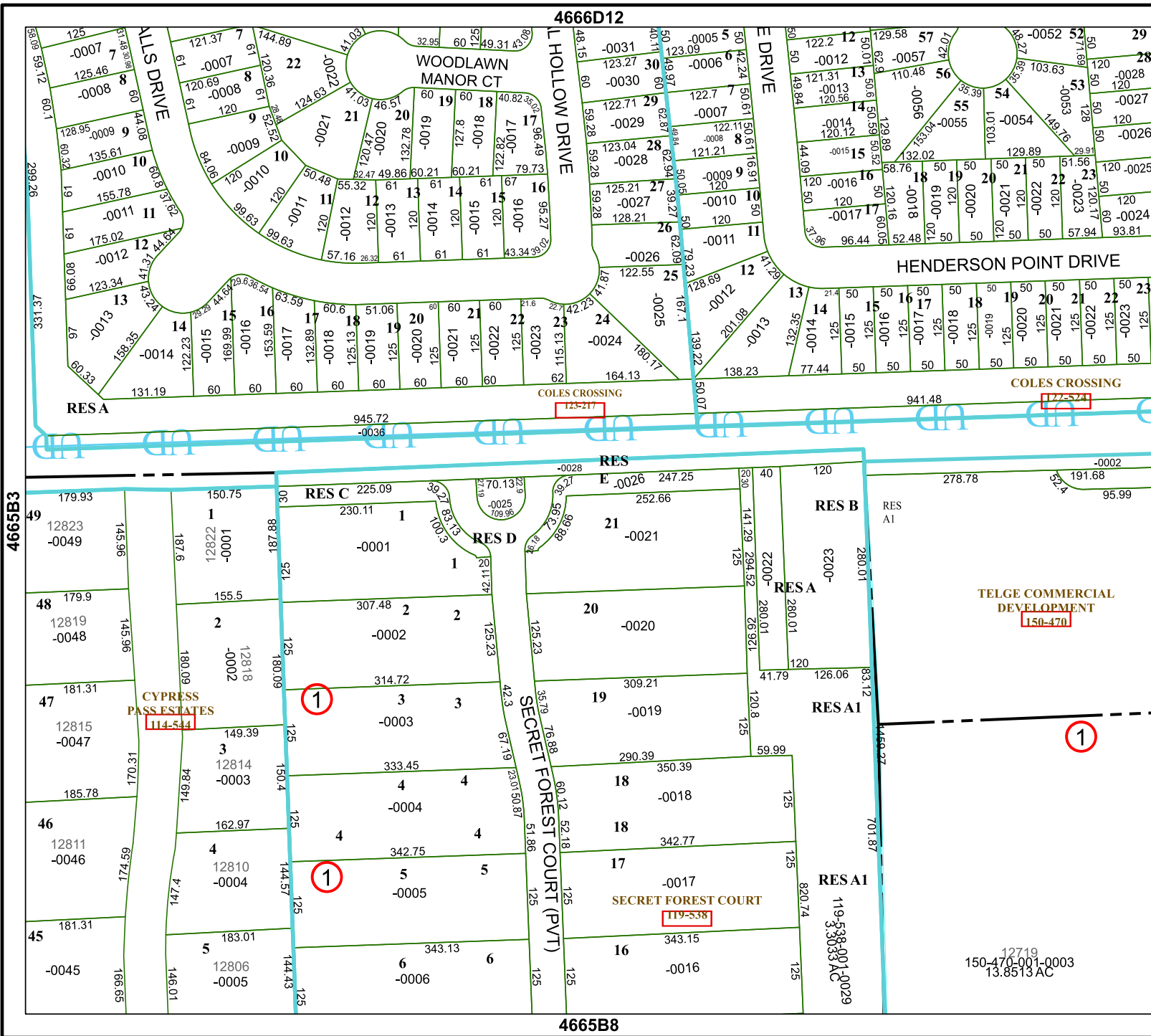


FACET 4665B4

10	11	12	9	10
2	3	4	1	2
6	7	8	5	6

4666D12

4665B8



4665B3

4765A



12719
150-470-001-0003
13.8513 AC