

Harris Central Appraisal District



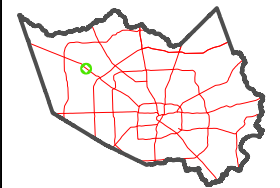
0 45 90 180 Feet

PUBLICATION DATE: 1/9/2025

Geospatial or map data maintained by the Harris Central Appraisal District is for informational purposes and may not have been prepared for or be suitable for legal, engineering, or surveying purposes. It does not represent an on-the-ground survey and only represents the approximate location of property boundaries.



MAP LOCATION



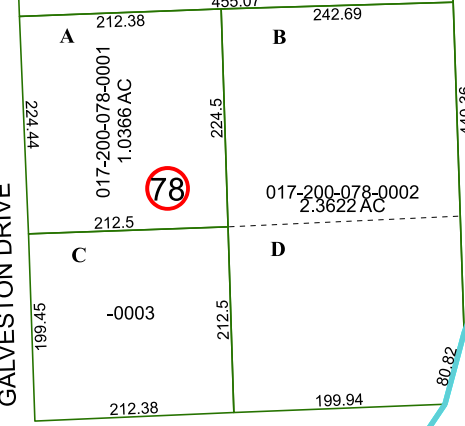
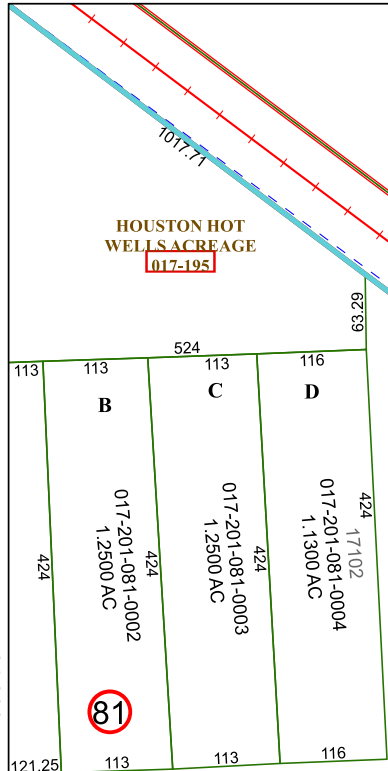
FACET 4665C4

10	11	12	9	10
2	3	4	1	2
6	7	8	5	6

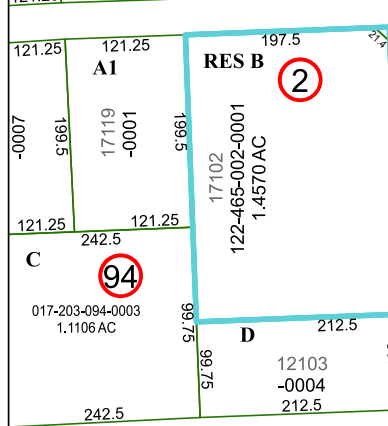
4665A12

U.S. HWY. 290

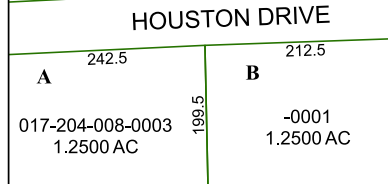
HOUSTON HOT WELLS ACREAGE
017-195



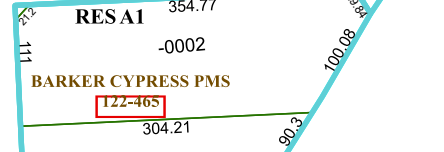
4665C3



GALVESTON DRIVE



HOUSTON DRIVE



4665C8

S ROAD

INGTON MUD 001

MOLTO 290 BARKER CYPRESS INDUSTRIAL
144-841

1