

4665B11

4665D7

Harris Central Appraisal District

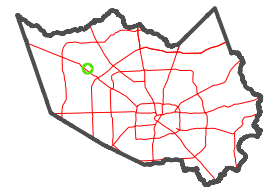


0 45 90 180 Feet

PUBLICATION DATE: 1/30/2023

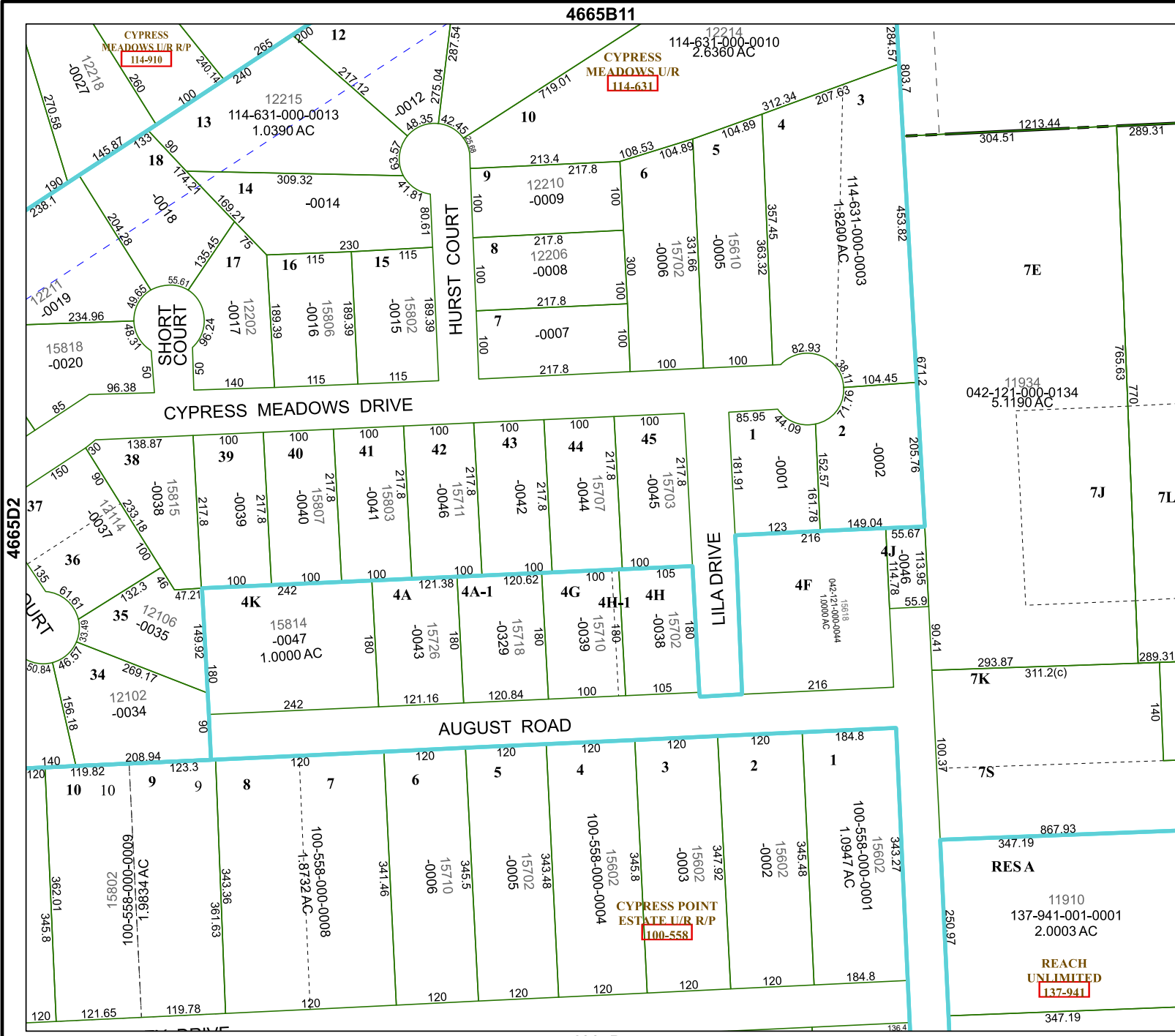
Geospatial or map data maintained by the Harris Central Appraisal District is for informational purposes and may not have been prepared for or be suitable for legal, engineering, or surveying purposes. It does not represent an on-the-ground survey and only represents the approximate location of property boundaries.

MAP LOCATION



FACET 4665D3

9	10	11	12	9
1	2	3	4	1
5	6	7	8	5



CYPRESS MEADOWS U/R R/P
114-910

CYPRESS MEADOWS U/R
114-631

CYPRESS POINT ESTATE U/R R/P
100-558

REACH UNLIMITED
137-941

RESA