

# Harris Central Appraisal District

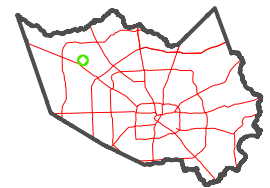


0 45 90 180 Feet

PUBLICATION DATE: 5/11/2023

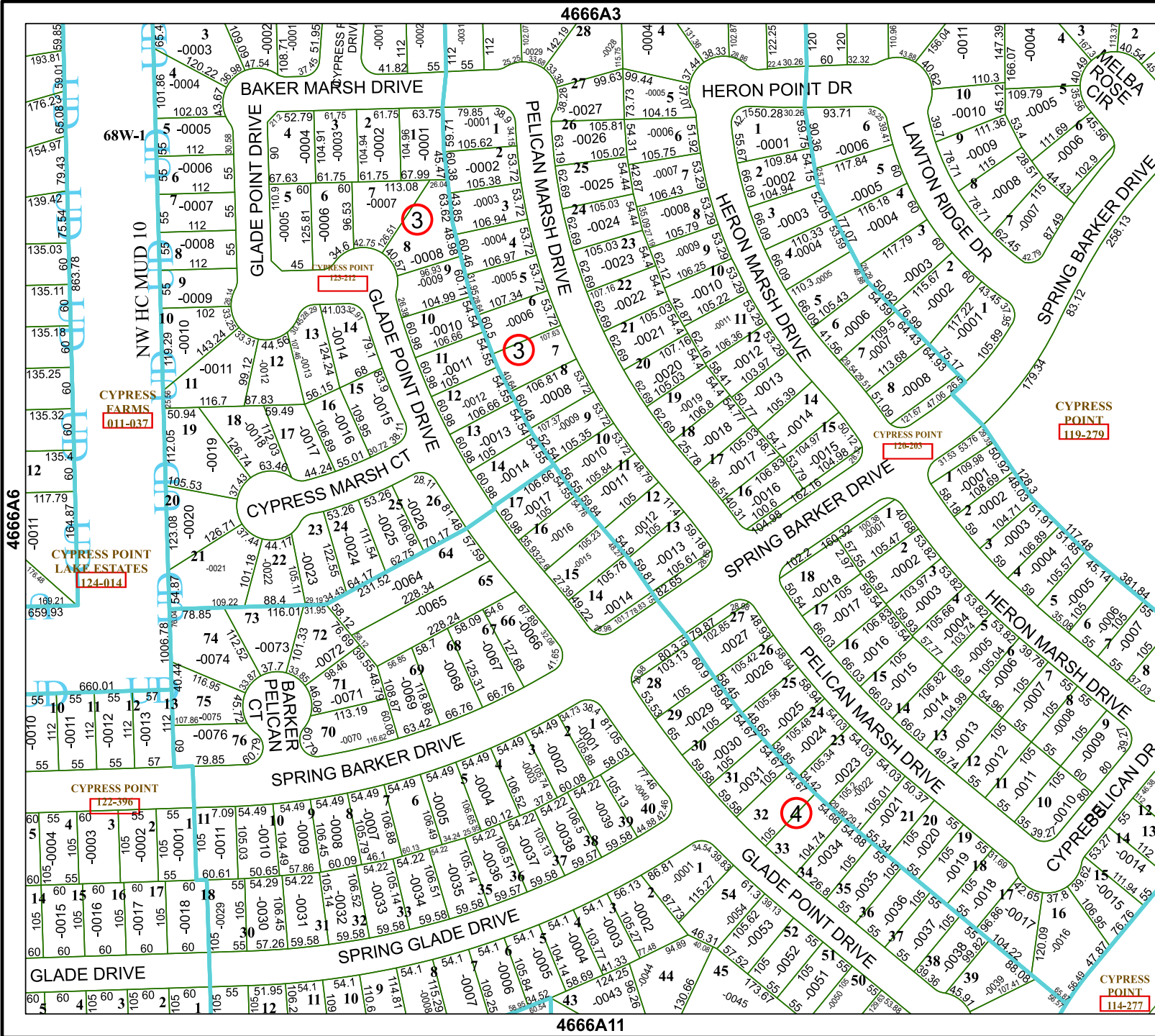
Geospatial or map data maintained by the Harris Central Appraisal District is for informational purposes and may not have been prepared for or be suitable for legal, engineering, or surveying purposes. It does not represent an on-the-ground survey and only represents the approximate location of property boundaries.

MAP LOCATION



## FACET 4666A7

1	2	3	4	1
5	6	7	8	5
9	10	11	12	9



4666A3

4666A11

4666A6

4666A8

CYPRESS FARMS  
1011-037

CYPRESS POINT LAKE ESTATES  
124-014

CYPRESS POINT  
122-396

CYPRESS POINT  
119-279

CYPRESS POINT  
122-203

CYPRESS POINT  
114-277