

4666A10

# Harris Central Appraisal District



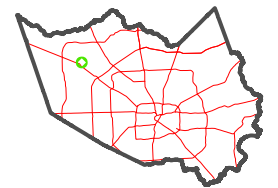
0 45 90 180 Feet

PUBLICATION DATE: 1/9/2025

Geospatial or map data maintained by the Harris Central Appraisal District is for informational purposes and may not have been prepared for or be suitable for legal, engineering, or surveying purposes. It does not represent an on-the-ground survey and only represents the approximate location of property boundaries.



## MAP LOCATION

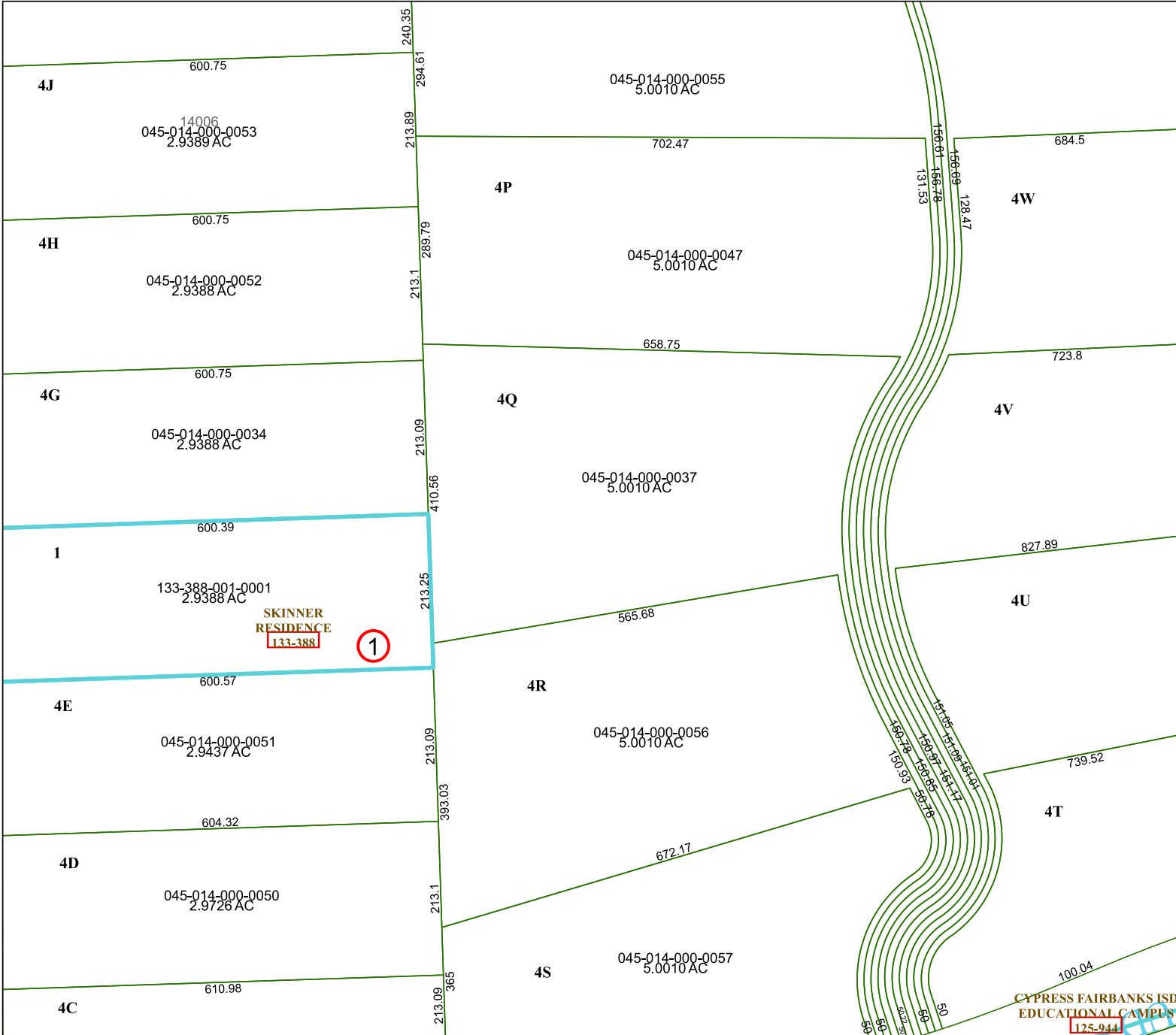


# FACET 4666C2

|    |   |    |    |    |
|----|---|----|----|----|
| 12 | 9 | 10 | 11 | 12 |
| 4  | 1 | 2  | 3  | 4  |
| 8  | 5 | 6  | 7  | 8  |

4666C1

4666C3



4666C6

CYPRESS FAIRBANKS ISD  
EDUCATIONAL CAMPUS  
125-944