

Harris Central Appraisal District

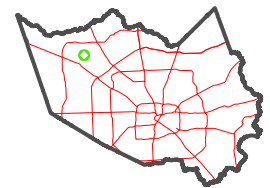


0 45 90 180 Feet

PUBLICATION DATE: 4/8/2024

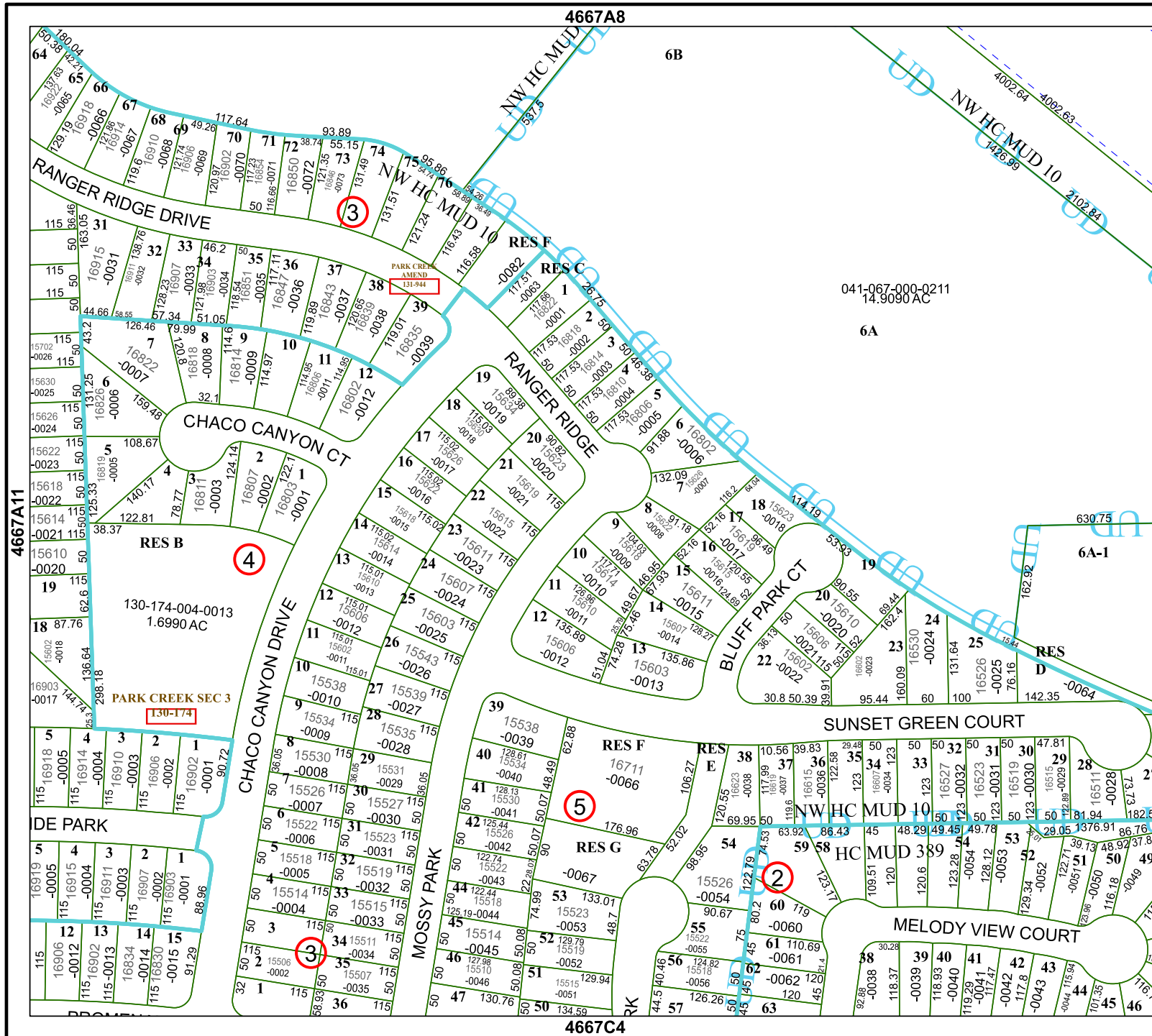
Geospatial or map data maintained by the Harris Central Appraisal District is for informational purposes and may not have been prepared for or be suitable for legal, engineering, or surveying purposes. It does not represent an on-the-ground survey and only represents the approximate location of property boundaries.

MAP LOCATION



FACET 4667A12

6	7	8	5	6
10	11	12	9	10
2	3	4	1	2



4667A8

6B

041-067-000-Q211
14.9090 AC

6A

4667A11

4667B9

4667C4