

4668D11

Harris Central Appraisal District



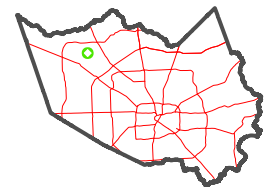
0 45 90 180 Feet

PUBLICATION DATE:
2/28/2024

Geospatial or map data maintained by the Harris Central Appraisal District is for informational purposes and may **not** have been prepared for or be suitable for legal, engineering, or surveying purposes. It does **not** represent an on-the-ground survey and only represents the approximate location of property boundaries.



MAP LOCATION



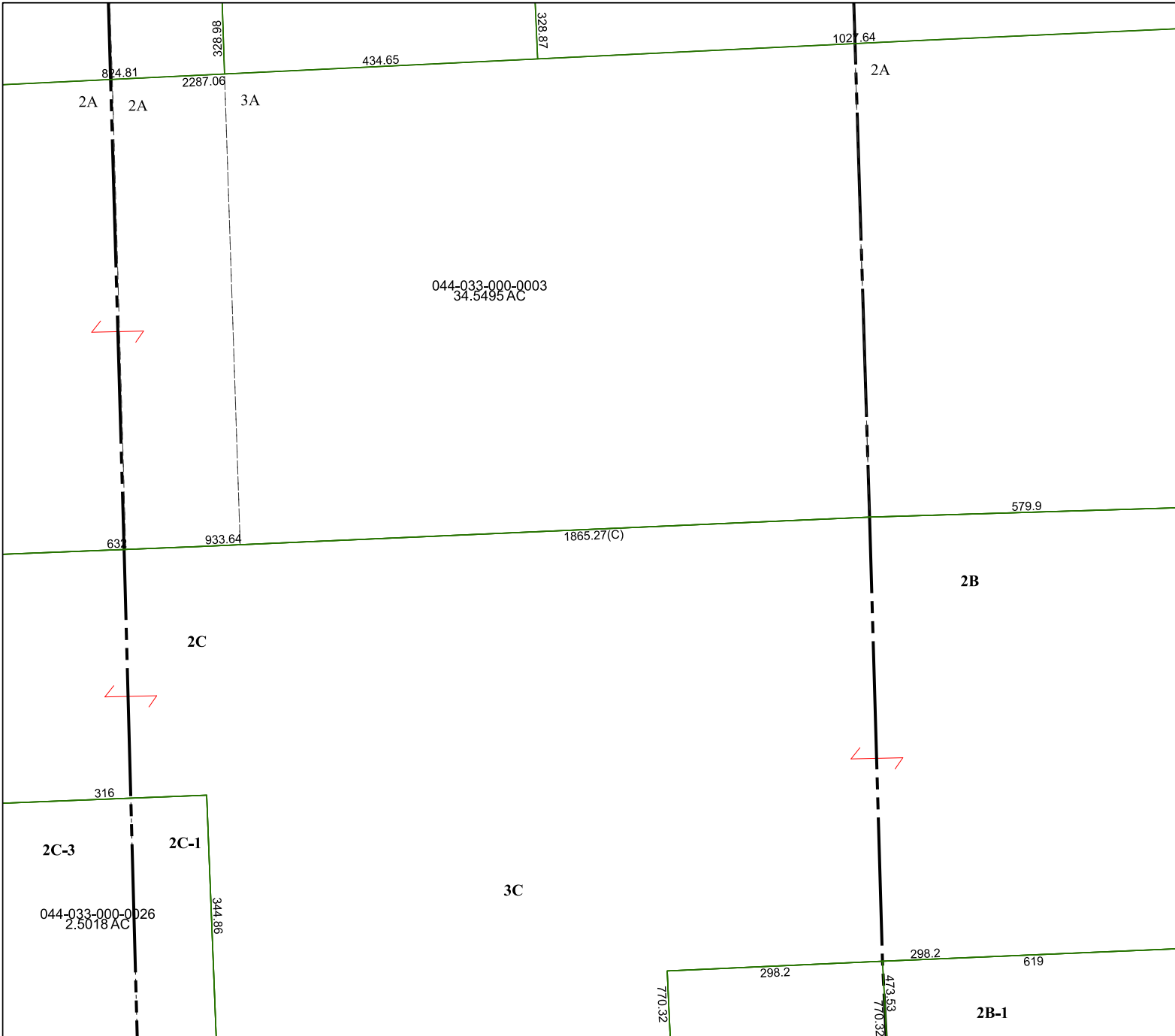
FACET 4667B3

9	10	11	12	9
1	2	3	4	1
5	6	7	8	5

4667B2

4667B4

4667B7



2A

2A

3A

2A

2C

2B

2C-3

2C-1

3C

2B-1

044-033-000-0003
34.5495 AC

044-033-000-0026
2.5018 AC