

# Harris Central Appraisal District

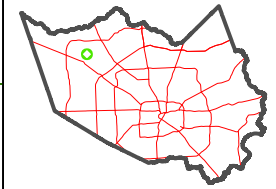


0 45 90 180 Feet

PUBLICATION DATE: 1/5/2023

Geospatial or map data maintained by the Harris Central Appraisal District is for informational purposes and may not be suitable for legal, engineering, or surveying purposes. It does not represent an on-the-ground survey and only represents the approximate location of property boundaries.

### MAP LOCATION

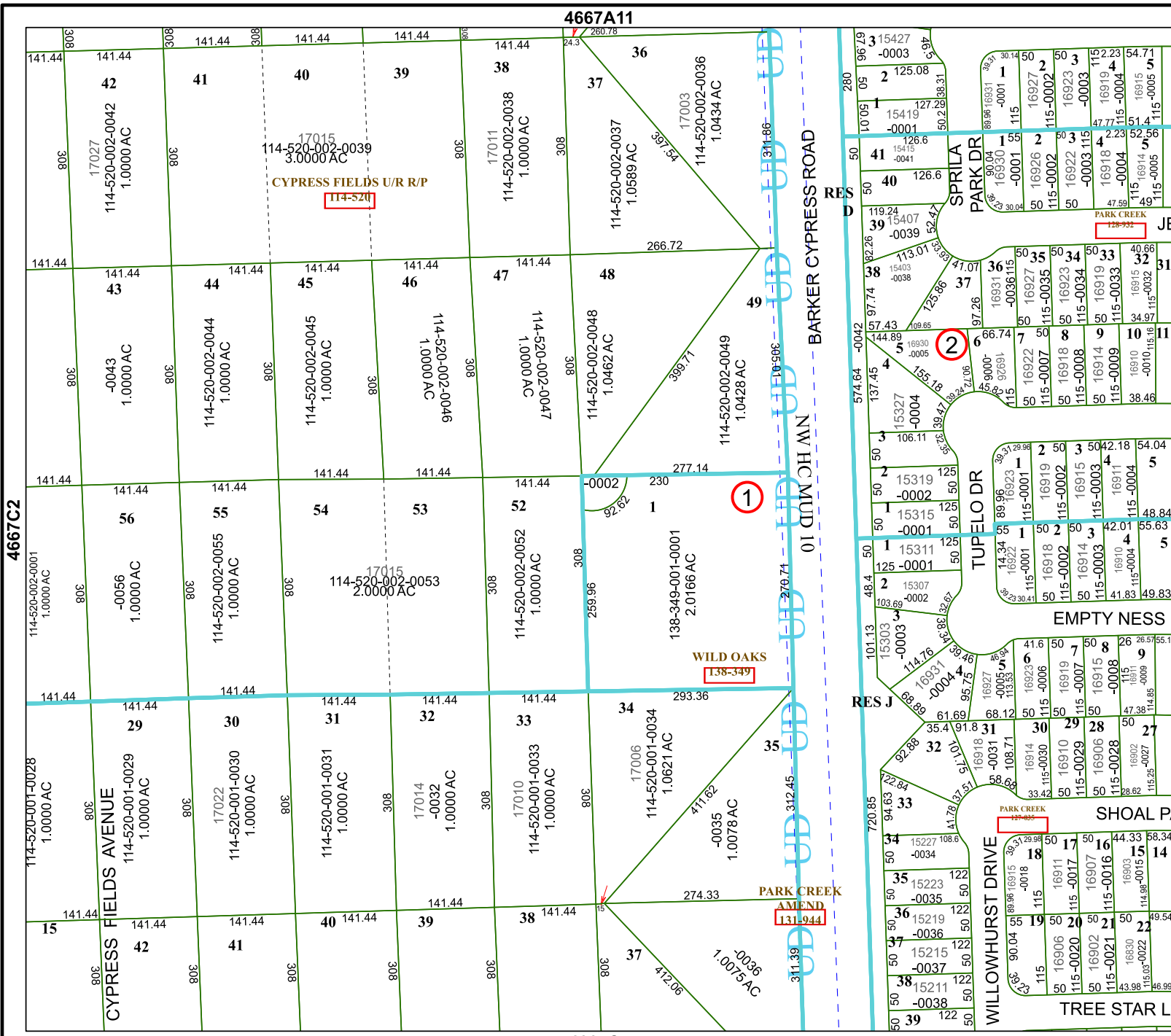


# FACET 4667C3

9	10	11	12	9
1	2	3	4	1
5	6	7	8	5

4667A11

4667C7



1

2

WILD OAKS  
138-349

PARK CREEK  
AMEND  
131-944

4667C4