

4669D10

4668B6

4668B1

# Harris Central Appraisal District

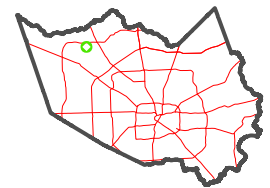


0 45 90 180 Feet

PUBLICATION DATE: 1/23/2024

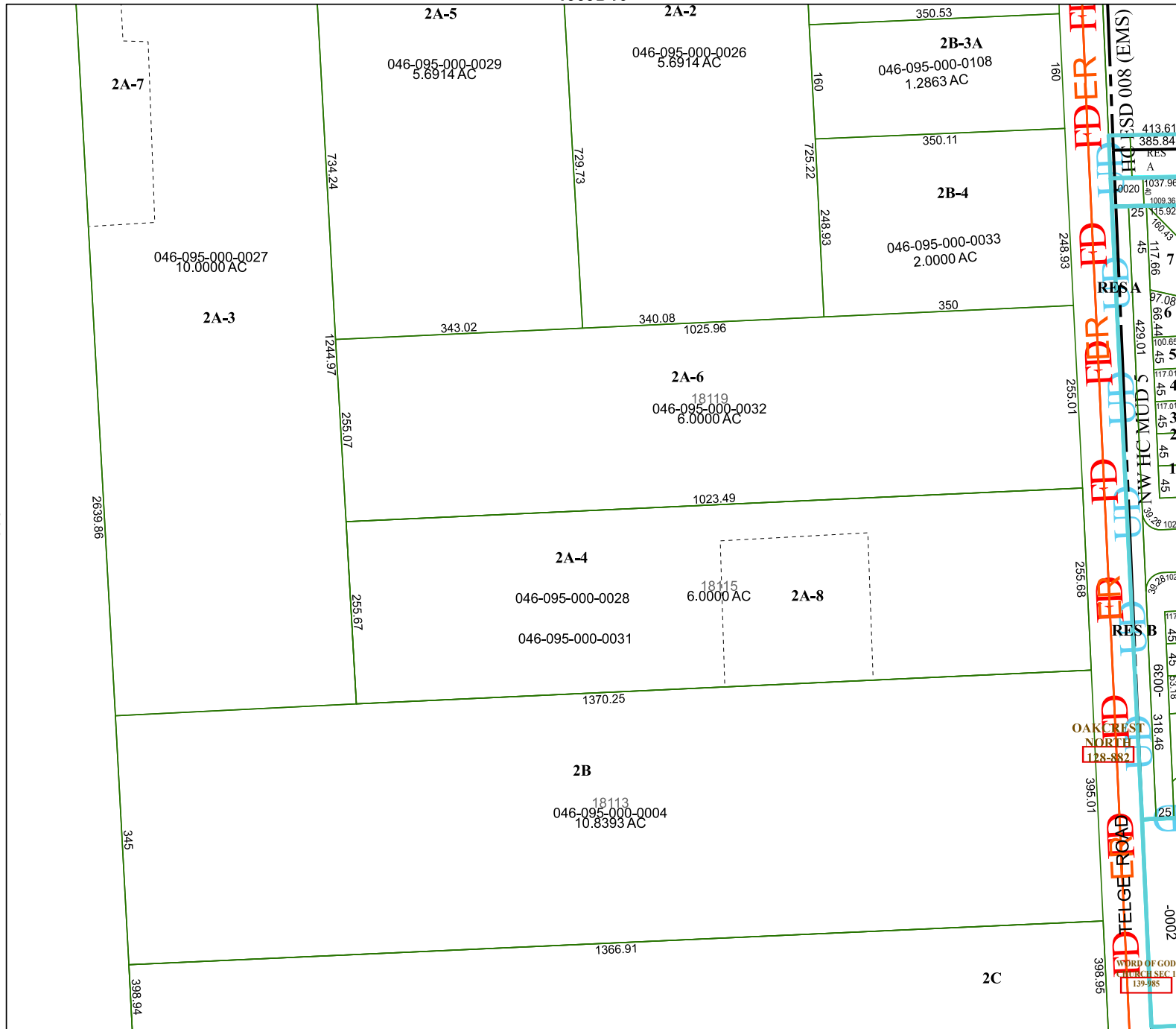
Geospatial or map data maintained by the Harris Central Appraisal District is for informational purposes and may not have been prepared for or be suitable for legal, engineering, or surveying purposes. It does not represent an on-the-ground survey and only represents the approximate location of property boundaries.

MAP LOCATION



## FACET 4668B2

12	9	10	11	12
4	1	2	3	4
8	5	6	7	8



2A-7

2A-5

2A-2

2B-3A

2B-4

2A-3

2A-6

2A-4

2A-8

2B

2C

D TELGE ROAD  
 OAKCREST NORTH  
 RES B  
 RES A  
 RES A  
 HD SD 008 (EMS)

046-095-000-0027  
10.0000 AC

046-095-000-0029  
5.8914 AC

046-095-000-0026  
3.8914 AC

046-095-000-0108  
1.2863 AC

046-095-000-0033  
2.0000 AC

046-095-000-0032  
6.0000 AC

046-095-000-0028  
6.0000 AC

046-095-000-0031

046-095-000-0004  
10.8393 AC

413.61

385.84

1037.96

1009.36

117.66

97.08

66.44

49.01

117.01

45.45

45.45

45.45

45.45

45.45

45.45

45.45

45.45

45.45

45.45

45.45

45.45

45.45

45.45

45.45

45.45

45.45

45.45

45.45

45.45

45.45

45.45

45.45

45.45

45.45

45.45

45.45

45.45

45.45

45.45

45.45

45.45