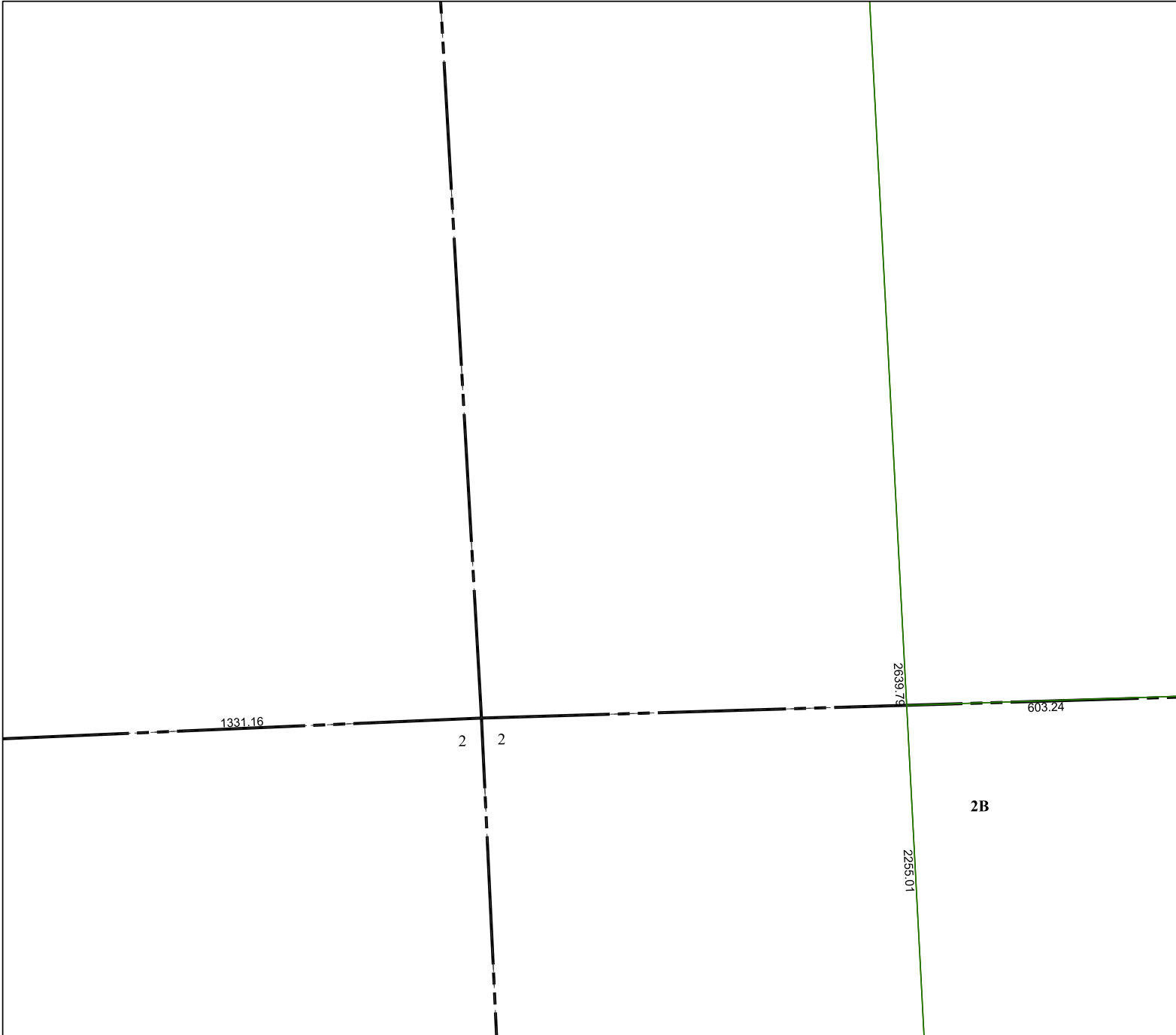


4668B1

4668A8



4668B9

Harris Central Appraisal District



0 45 90 180 Feet

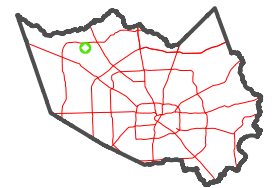
PUBLICATION DATE:
6/22/2023

Geospatial or map data maintained by the Harris Central Appraisal District is for informational purposes and may not have been prepared for or be suitable for legal, engineering, or surveying purposes. It does not represent an on-the-ground survey and only represents the approximate location of property boundaries.



4668B6

MAP LOCATION



FACET

4668B5

3	4	1	2	3
7	8	5	6	7
11	12	9	10	11